

1439

174

R.P.O. Vol. 7 Fol. 547

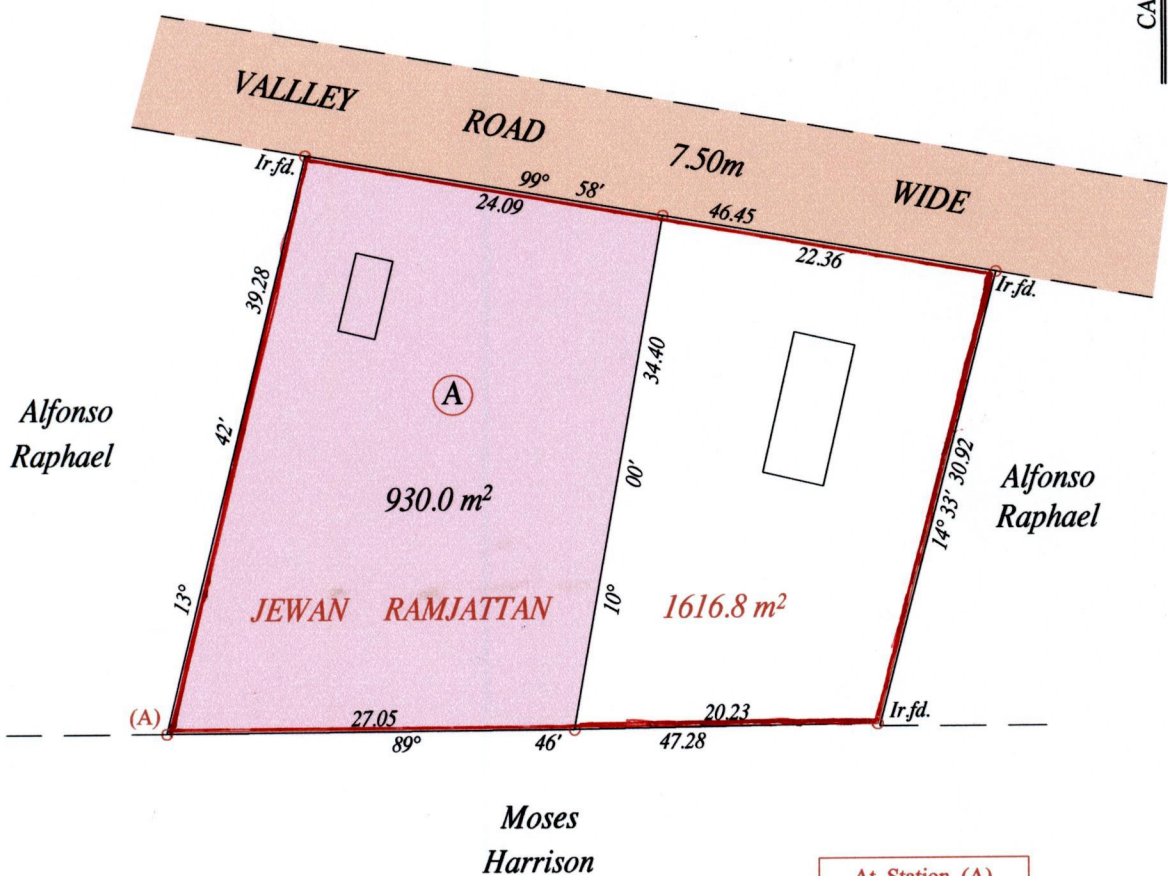
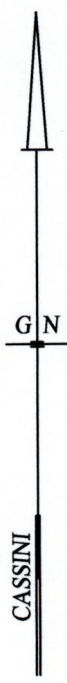
C.T. Vol. 4818 Fol. 463

Vol. 5229 Fol. 523

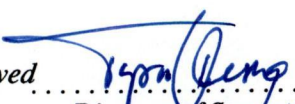
Ward of Manzanilla

County of St. Andrew

Cadastral Sheet (C.22.J) 25.F.
2/a



At Station (A)
 E 0706245
 N 1171805
 Reading taken with
 Handheld G.P.S.
 U.T.M. Zone 20
 Naparima
 ± 5 m.

Approved 
 Director of Surveys
 2009-9-18

Vide Bk. 174 fol. 35
 Vide Bk. 1280 fol. 198

○ Denotes Iron put except stated otherwise.

SCALE : 1:500

Note: Bearings are cassini grid based on solar observations

Distances are in metres

PLAN of a Parcel of land coloured pink in the Ward of Manzanilla

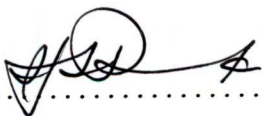
Containing nine hundred and thirty point zero square metres

Surveyed by me, with due authority, in March 2009 for Geraldine Patrice

In accordance with Regulation 25 (1) of the Land Surveyors' Regulations 1998,

I certify that this plan is correct.



Checked by  16/9/09

Entered on Trinidad & Tobago Land Surveyor 9. 09 2009