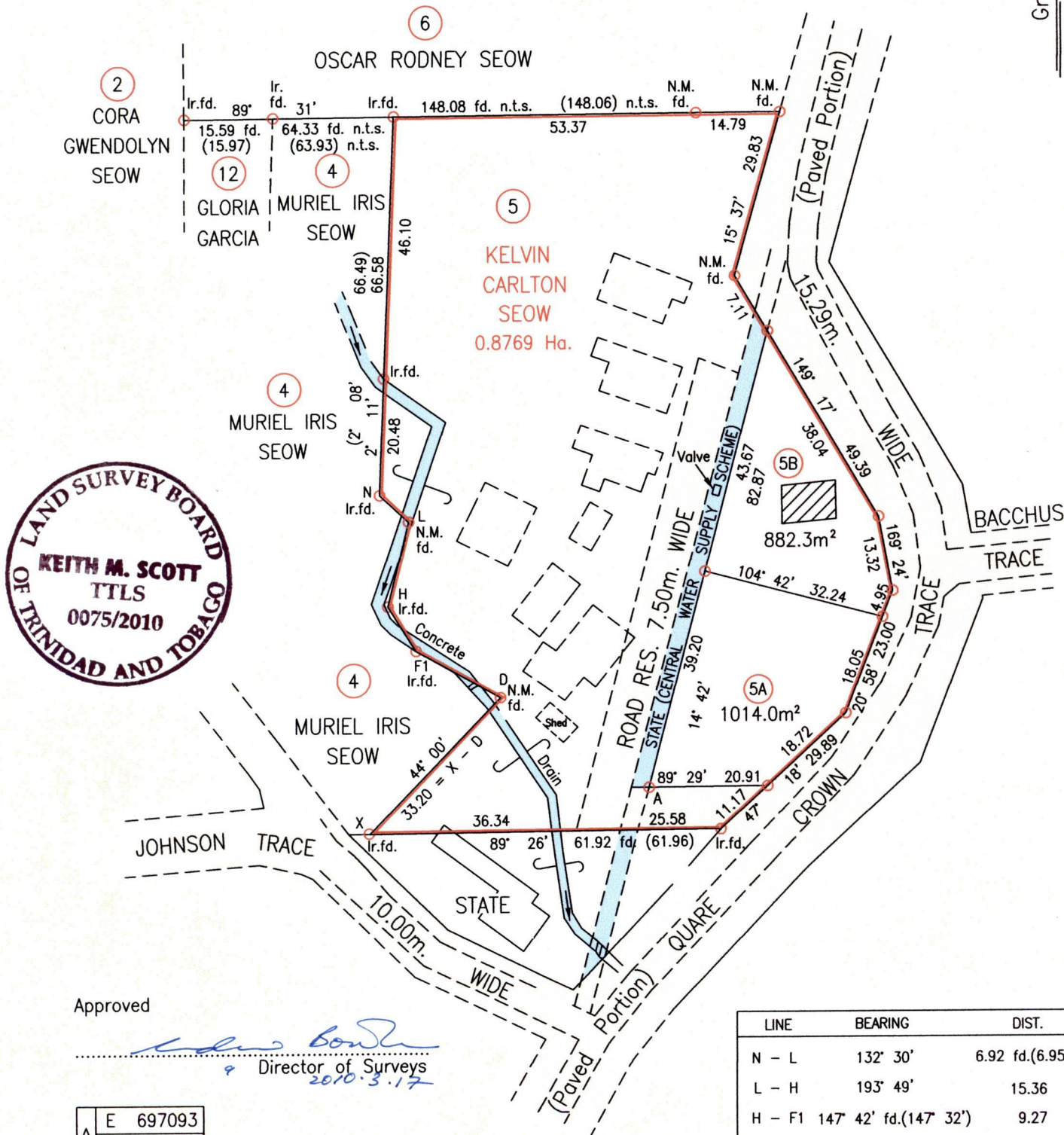


"LOT 5 QUARE CROWN TRACE, VALENCIA"

Vide
Plan J.A.259
Bk. 1282:82

Grid North
U.T.M.



Approved

[Signature]
 Director of Surveys
 2010.3.17

A	E 697093
	N 1178739

Reliability Error \pm 2.0 m.
 Coordinates are UTM, Naparima 1955 from
 Garmin GPSmap 60CSx Handheld GPS Receiver

Bearings are UTM Grid based on Solar Obs.

○ Denotes Iron put unless otherwise stated

Plan of 2 Parcels of land coloured pink in the Ward of Valencia
 Containing together one thousand eight hundred and ninety six point three square metres
 Surveyed by me, with due authority, in January 2010

In accordance with Regulation 25(1) of the Land Surveyors' Regulations 1998,
 I certify that this plan is correct.

Checked by *[Signature]* 2/3/10

Entered on Trinidad & Tobago Land Surveyor *29th January* 2010

LINE	BEARING	DIST.
N - L	132° 30'	6.92 fd.(6.95)
L - H	193° 49'	15.36
H - F1	147° 42' fd.(147° 32')	9.27
F1 - D	118° 52'	17.02

SCALE 1:1000
 Distances are in Metres

Lot #	C.T. Vol & Folio	Names.
5		
5A	5235 fol 275	June Seow & Earl Seow.
5B		



1439/163
1333/115