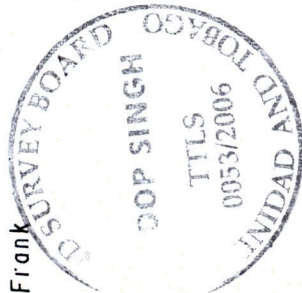
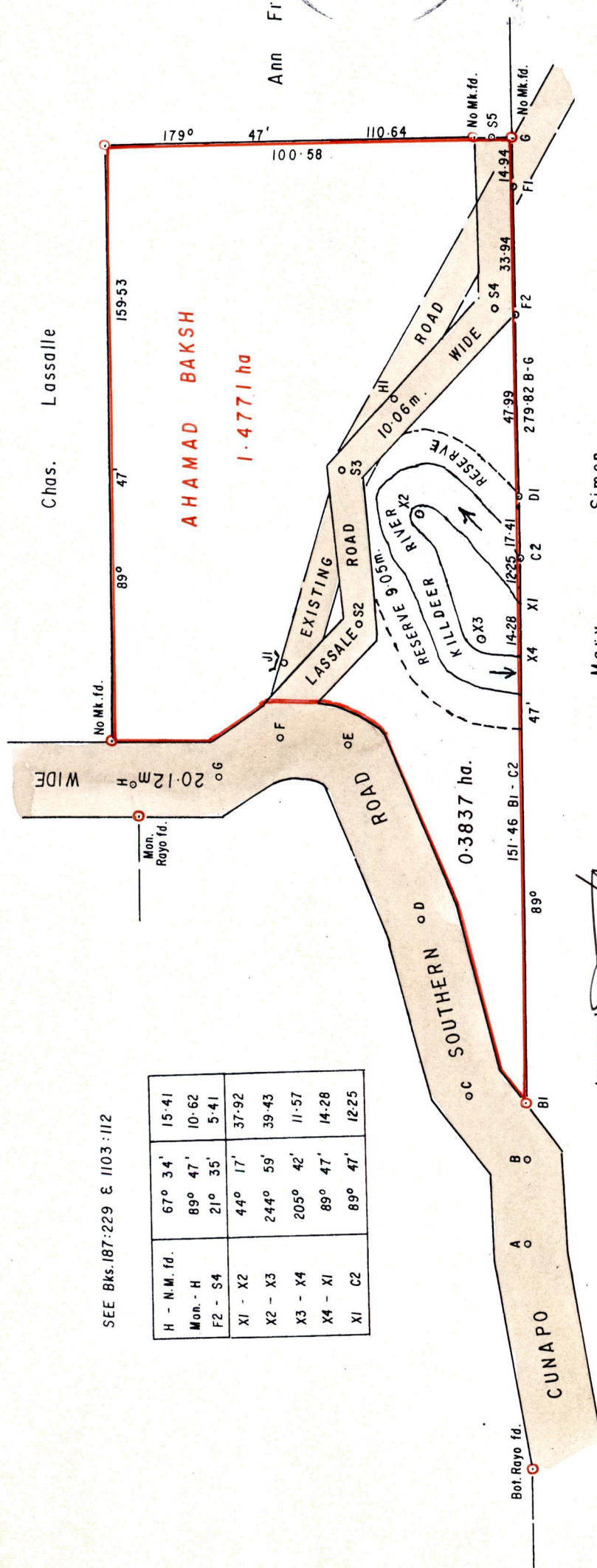


SEE Bks. 187:229 & 1103:112

H - N.M. fd.	67° 34'	15-41
Mon. - H	89° 47'	10-62
F2 - S4	21° 35'	5-41
X1 - X2	44° 17'	37-92
X2 - X3	244° 59'	39-43
X3 - X4	205° 42'	11-57
X4 - X1	89° 47'	14-28
X1 C2	89° 47'	12-25



Approved *[Signature]*
Director of Surveys
2008-1-23

Mary Simon
Bearings are Cassini Grid based on Solar Obs.
SCALE 1 / 1500

Note: To Obtain compass bearings add 13 minutes

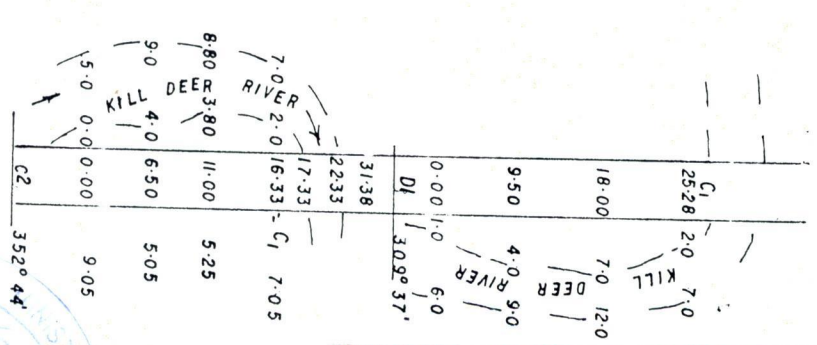
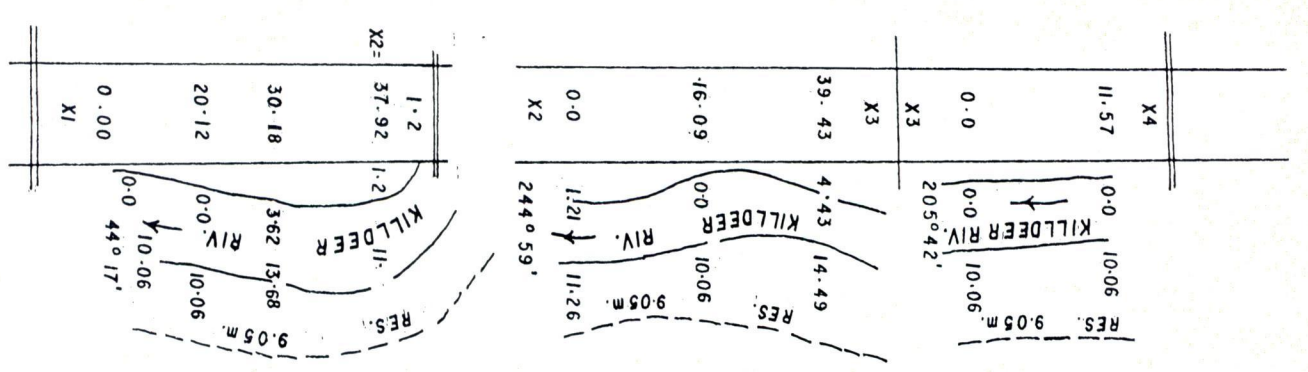
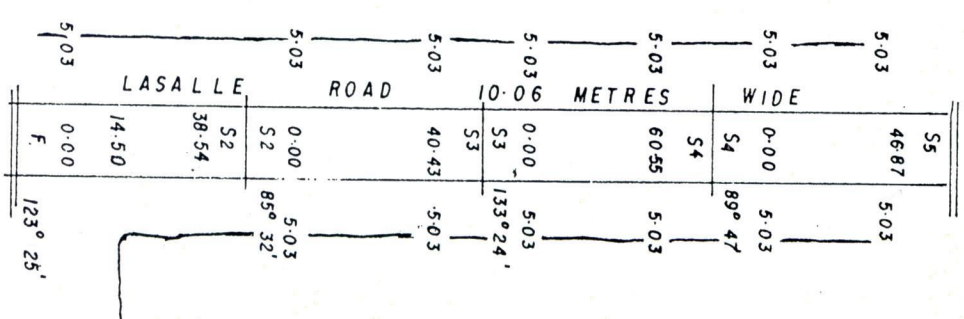
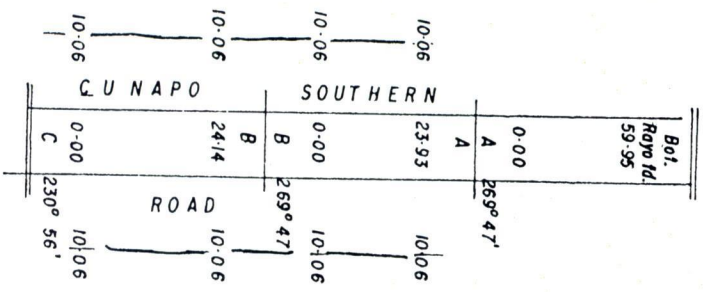
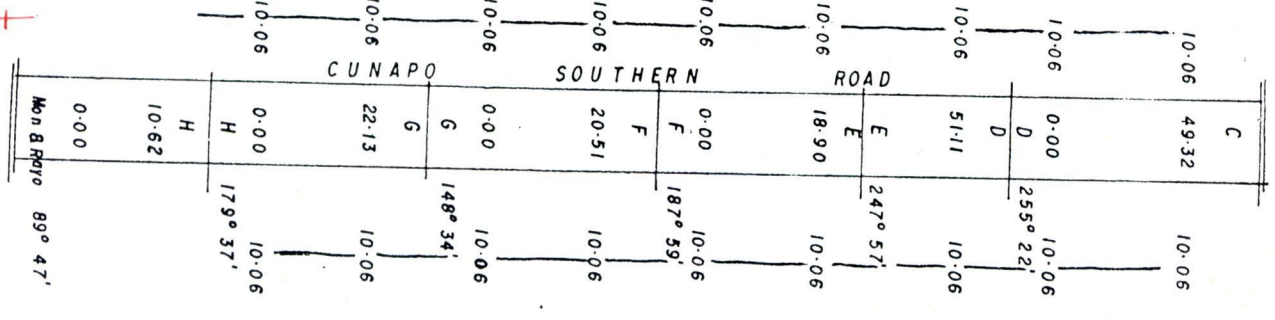
PLAN of a Parcel of land coloured pink in the Ward of Cocal
Containing point *three eight three seven* hectares
Surveyed by me, with due authority, in January 2005
In accordance with Reg. 25 (1) of the Land Surveyors' Regulations 1998,
I certify that this plan is correct.

Checked by *[Signature]*
Entered Trinidad and Tobago Land Surveyor 2006

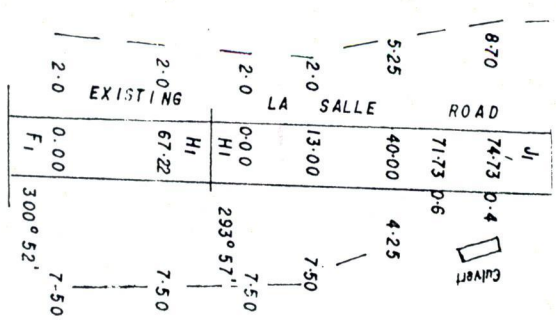
1439

159

no 1439/159
11/11/94



CT Vol. 5315 Fl. 491 - Ramsaran & Seeta Harjman



14/11/94