

Vide S.O. 27/39  
Bk. 797 Fol. 280  
Vide Bk. 1179 Fol. 45  
Vide Bk. 1103 Fol. 195

1439

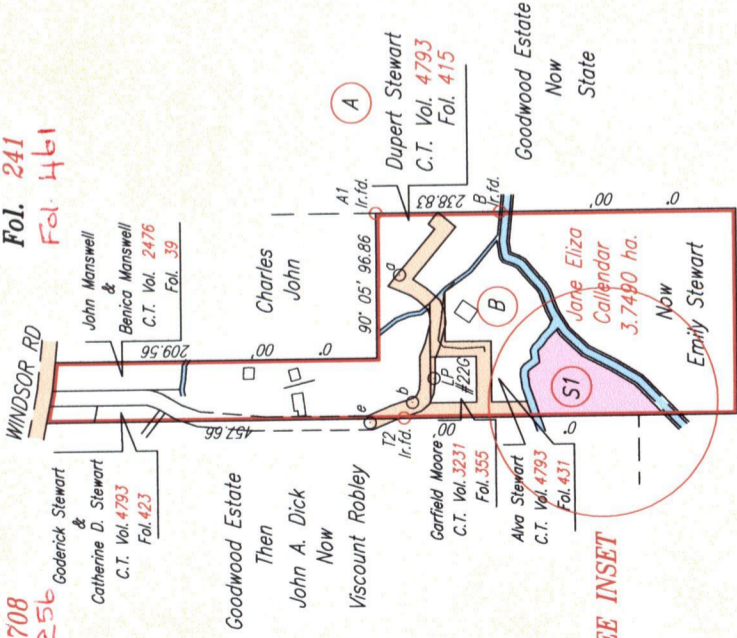
1583



SCALE 1:1000  
Distances are in METRES

GOODWOOD

R.P.O. Vol. 933  
C.T. Vol. 4708  
C.T. Vol. 5256  
Goderick Stewart & Catherine D. Stewart C.T. Vol. 4793 Fol. 423  
John Manswell & Benica Manswell C.T. Vol. 2476 Fol. 39  
Charles John 90° 05' 96.86  
Garfield Moore C.T. Vol. 3231 Fol. 355  
Alva Stewart C.T. Vol. 4793 Fol. 431  
Dupert Stewart C.T. Vol. 4793 Fol. 415



SEE INSET

SCALE 1:5000  
Distances are in METRES

Approved *[Signature]* Director of Surveys 2010.4.12

○ Denotes Iron put except where otherwise stated

Bearings are Cassini Grid based on Solar Observations

PLAN of a Parcel of land coloured pink in the Ward of Tobago

Containing two thousand and thirty three point four square metres

Surveyed by me, with due authority, in October 2008

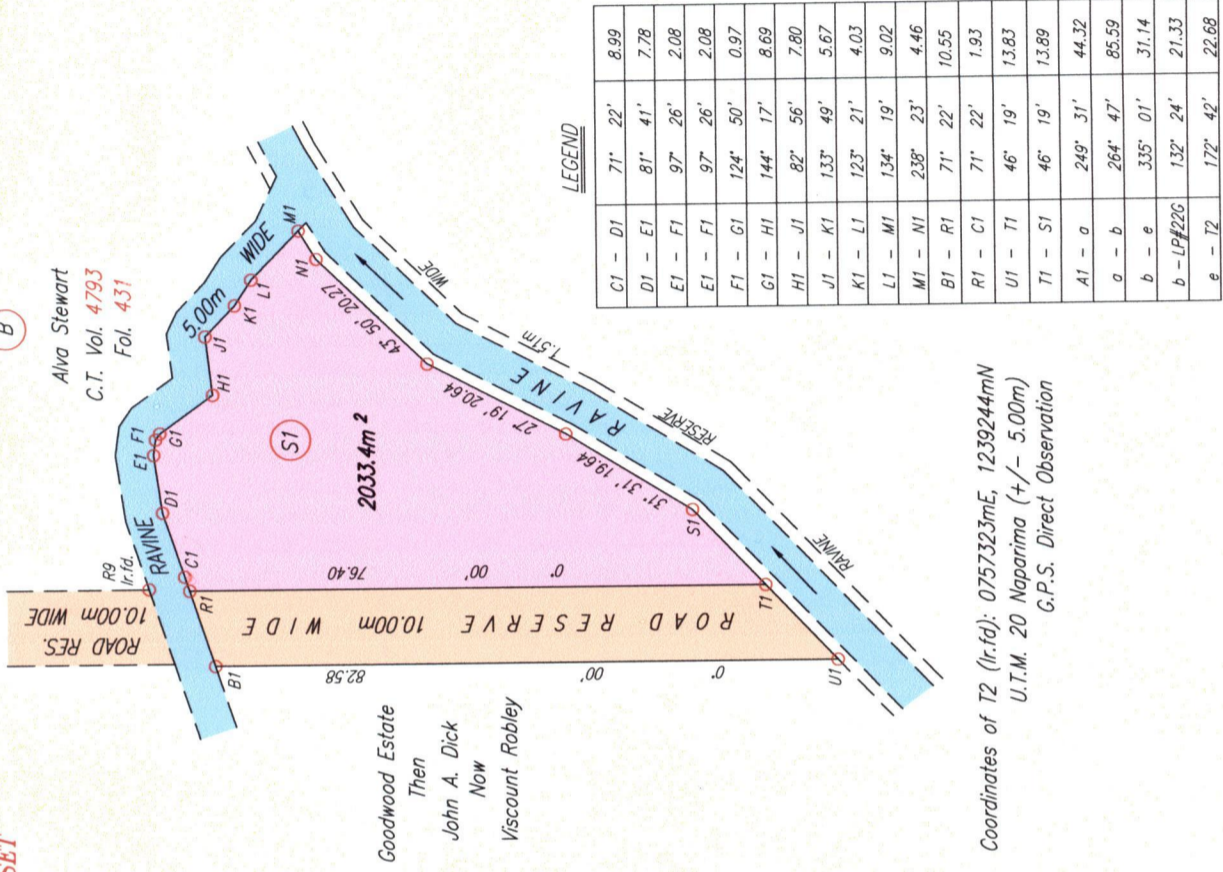
In accordance with Regulation 25 (1) of The Land Surveyors' Regulations 1998,

I certify that this plan is correct.

Checked by *[Signature]* 9/4/10

Entered on .....

INSET



LEGEND

C1 - D1	71° 22'	8.99
D1 - E1	81° 41'	7.78
E1 - F1	97° 26'	2.08
F1 - G1	97° 26'	2.08
G1 - H1	124° 50'	0.97
H1 - J1	144° 17'	8.69
J1 - K1	82° 56'	7.80
K1 - L1	133° 49'	5.67
L1 - M1	123° 21'	4.03
M1 - N1	134° 19'	9.02
N1 - R1	238° 23'	4.46
R1 - C1	71° 22'	10.55
C1 - T1	71° 22'	1.93
T1 - U1	46° 19'	13.83
U1 - S1	46° 19'	13.89
A1 - a	249° 31'	44.32
a - b	264° 47'	85.59
b - e	335° 01'	31.14
b - LP#22G	132° 24'	21.33
e - T2	172° 42'	22.68

Coordinates of T2 (Ir.f.d.): 0757323mE, 1239244mN  
U.T.M. 20 Naparima (+/- 5.00m)  
G.P.S. Direct Observation

TTLS

Trinidad & Tobago Land Surveyor  
6<sup>th</sup> April 2010  
C:\LESS 2008\STEWART,RUSTY COLLIN.dwg  
FILE NO: TS054

