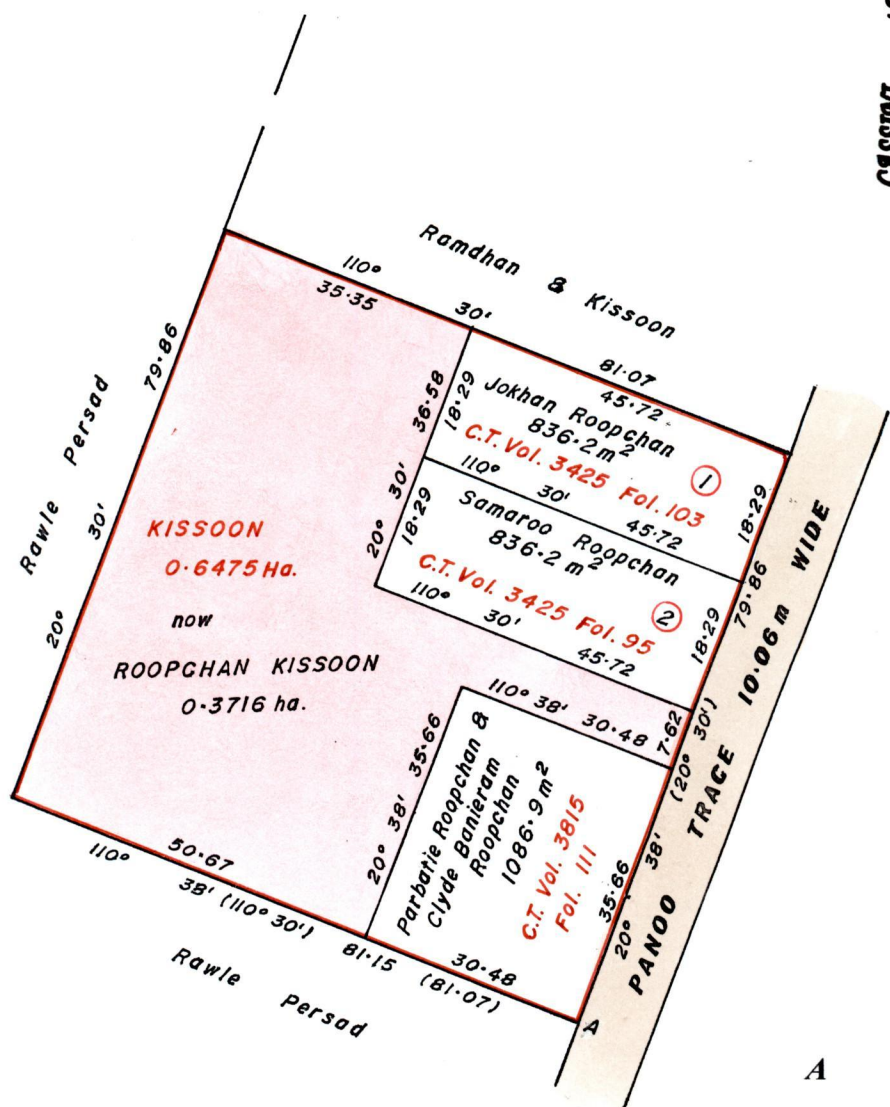
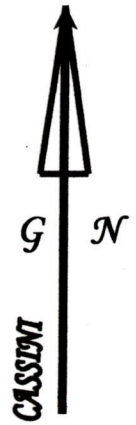


Vol. 5448 Fol. 143
R.P.O Vol. 91 Fol. 519
C.T. Vol. 1017 Fol 505

REMAINING PORTION

Ward of Naparima.
County of Victoria.
Cadastral Sheet G.13. J. 63F
2/c


Process ID # 42924




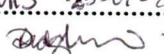
U.T.M. 20, WGS 84 (+/-5.0m)
GPS Handheld Direct O


Bk. 834 : 134.
" 1197 : 46.
" 1233 : 35

SCALE 1 : 1000.
Distances are in METRES

Approved 
Director of Surveys. 2011.11.21

This is a true copy of a diagram of zero point six four seven five hectare, Originally transferred to KISSOON, showing a portion, Coloured pink and containing zero point three seven one six hectare, being the remainder, after three previous transfers of another portion of the land. In accordance with Reg. 25(1) of the Land Surveyors' Regulations 1998, I certify that this plan is correct.

Checked by  10/11/11
Entered CMIS 25-01-2013



Trinidad and Tobago Land Surveyor..... 2011.