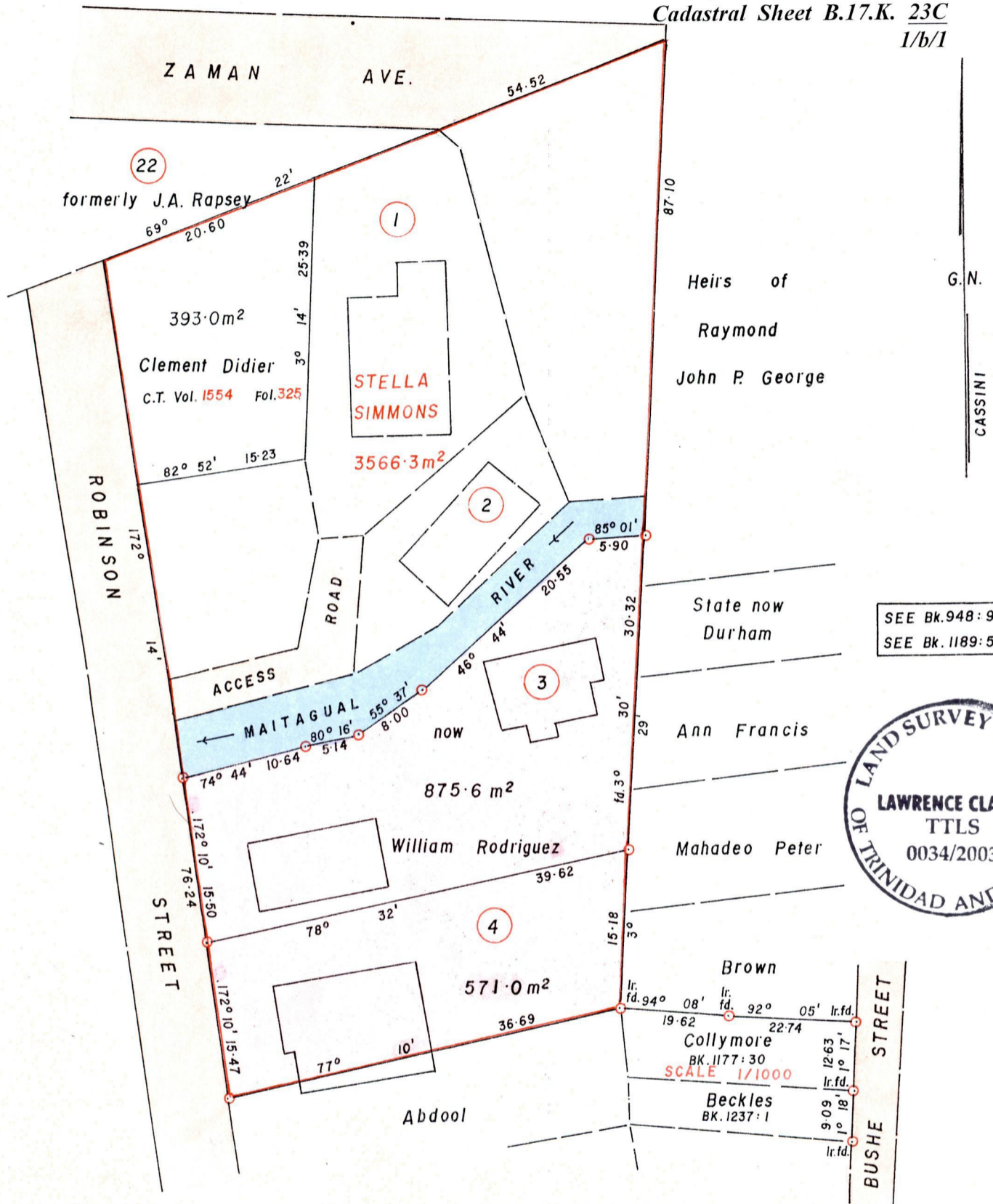
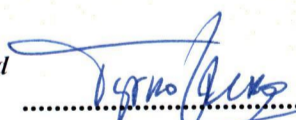


Ward of St. Anns
County of St. George
Cadastral Sheet B.17.K. 23C
1/b/1




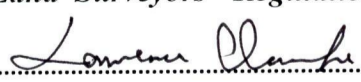
SEE BK. 948: 98
SEE BK. 1189: 51



Approved 
 Director of Surveys
 2004-10-18

SCALE 1/500
Distances are in metres

○ Denotes Iron put unless otherwise stated
 Bearings are Cassini Grid based on Solar Observations
PLAN of 2 Parcels of land coloured pink in the Ward of St. Anns
Containing together one thousand four hundred and forty- six point six square metres
Surveyed by me, with due authority in .October 2003
In accordance with Regulation 25 (1) of the Land Surveyors' Regulations 1998,
I certify that this plan is correct.
 Checked by 


 Lawrence Clarke
 Land Surveyor

Entered Trinidad and Tobago Land Surveyor... 18th December 2003

Lot No. 3 CT. VOL. 5358 FOL. 239 DRAVID SHORTTE

9 JUL 2004
Lands and
Surveys

9 JUL 2004
Lands and
Surveys

1001A39/1A7
145/65