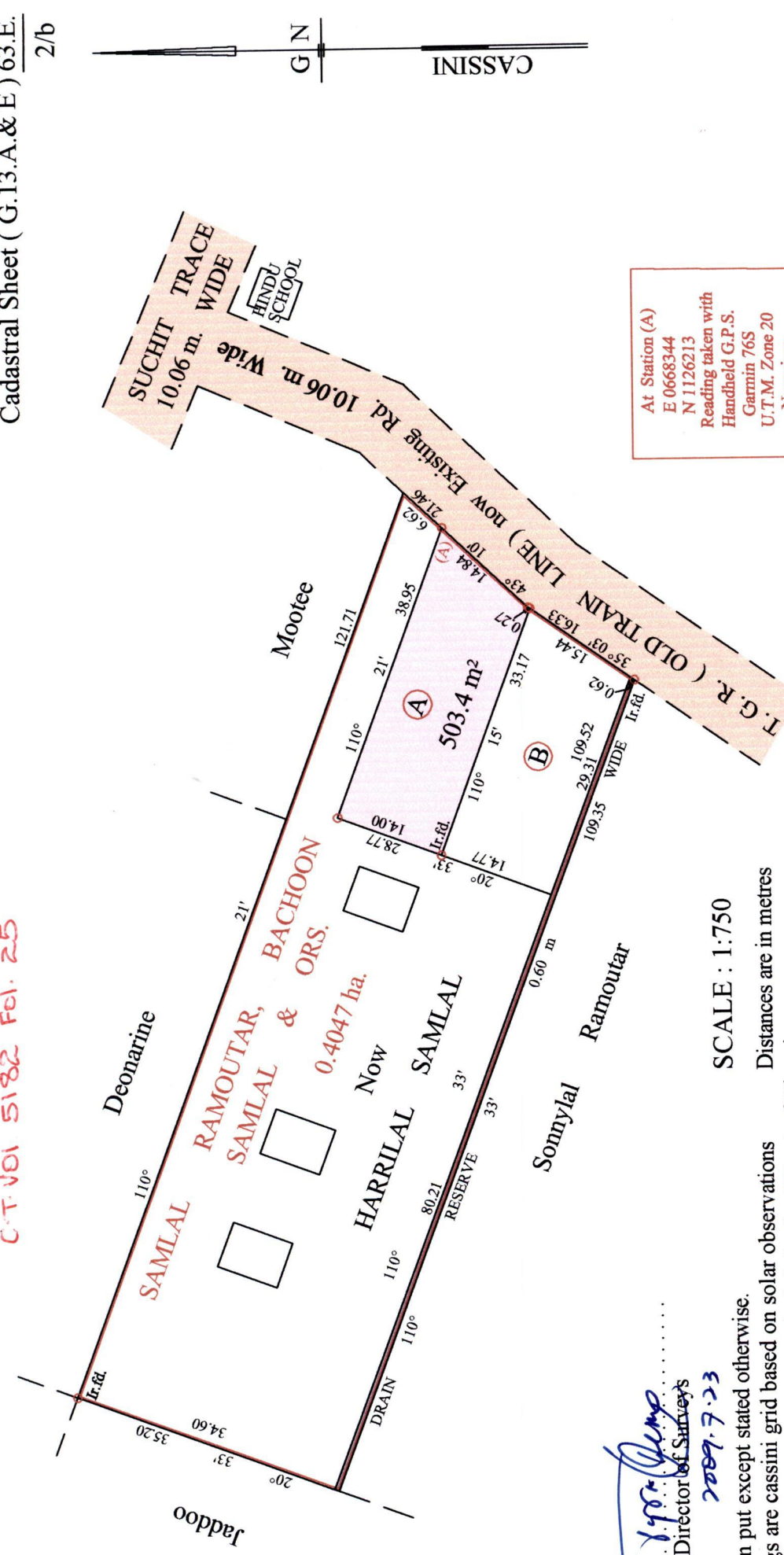


R.P.O. Vol. 91 Fol. 351
 C.T. Vol. 4010 Fol. 521
 C.T. Vol. 5182 Fol. 25

Ward of Siparia
 County of St. Patrick
 Cadastral Sheet (G.13.A.&E) 63.E.
 2/b

1439

141



At Station (A)
 E 0668344
 N 1126213
 Reading taken with
 Handheld G.P.S.
 Garmin 76S
 U.T.M. Zone 20
 Naparima
 ± 5 m.



Vide Bk. 926 fol. 134
 Vide Bk. 1267 fol. 45

SCALE : 1:750

Distances are in metres
 PLAN of a Parcel of land coloured pink in the Ward of Siparia
 Containing five hundred and three point four square metres
 Surveyed by me, with due authority, in July 1999
 In accordance with regulation 25 (1) of the Land Surveyors' Regulation 1998,
 I certify that this plan is correct.

Approved by *[Signature]*
 Director of Surveys
 2009.7.23

[Signature]

Checked by *[Signature]*
 Entered on Trinidad & Tobago Land Surveyors 16.07.2009

2/11/05

LOT #	C. T. VOLS, Folio	Names.

101 215 51 55

1439/141
1500/117