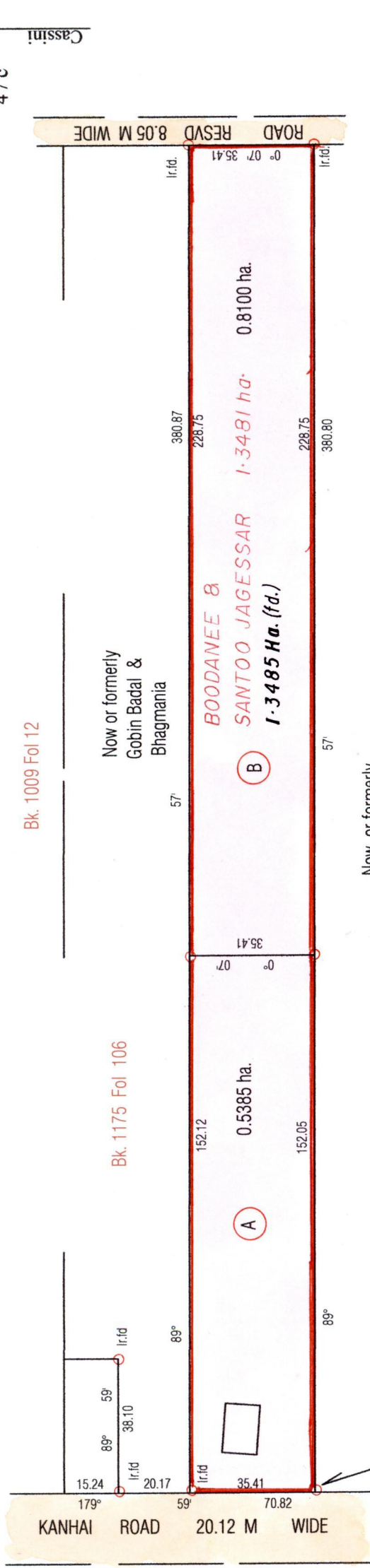


Vol. 38 Fol. 139
 R.P.O Vol 37 Fol. 471
 C.T Vol. 4729 Fol. 495

Ward of Savana Grande
 County of Victoria
 Cadastral Sheet G 9 O 64 A
 4/c



Approved ... *[Signature]*
 Director of Surveys
 2008.11.7

Bearings are CASSINI Grid based on Solar Obs
 SCALE 1 / 1500
 Distances are in metres

○ Denotes iron put except otherwise stated
 Note: To obtain compass bearings add/subtract minutes

PLAN of 2 Parcels of land coloured Pink in the Ward of Savana Grande
 Containing one point three four eight five hectares

Surveyed by me, with due authority, in July 2008

In accordance with Regulation 25 (1) of the Land Surveyors' Regulations 1998 I certify that this plan is correct.

Checked by ... *[Signature]* 5/11/08

Entered ... *[Signature]*

Trinidad and Tobago Land Surveyor 11th September... 2008

1439

14

LOT No.	Ct. VOLUME & FOLIO	NAMES
A		
B	5221 fol. 93	RAMPERSAD & RAMRAJIE SINGH



Now 1439/14
~~1427/124~~