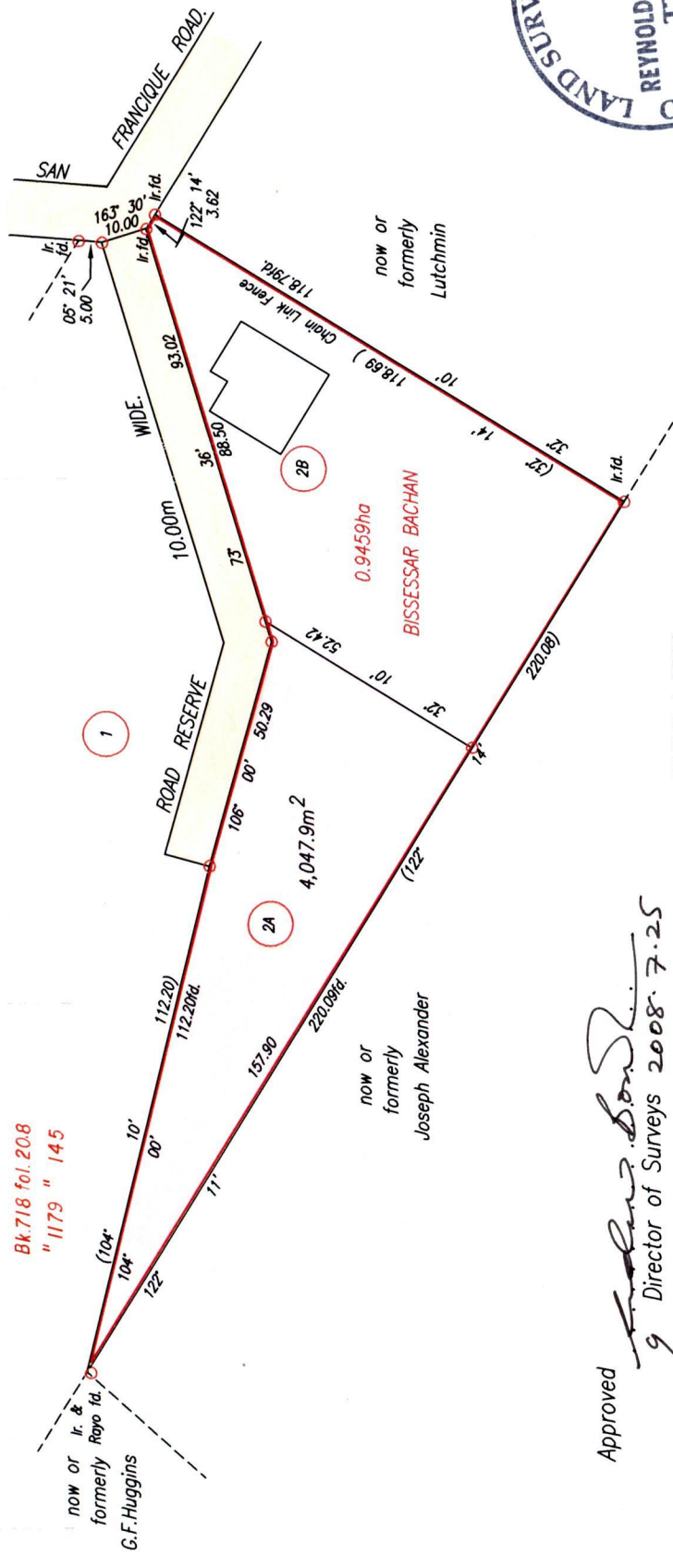
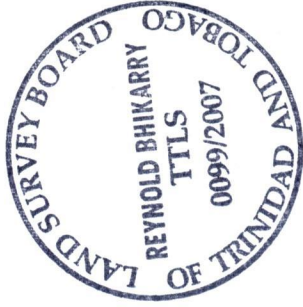
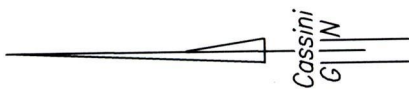


Cadastral Sheet G.12.H. 63E
Ward of Siparia
County of St.Patrick.



Vol. 5331 fol. 487
R.P.O. Vol. 126 Fol. 615
C.T. Vol. 3302 Fol. 423
Bk. 718 fol. 208
" 1179 " 145

Approved
Frederic Bon...
9 Director of Surveys 2008.7.25

SCALE 1:1500
Distances are in Metres

○ Denotes Iron put except otherwise stated.
Bearings are Cassini Grid based on Solar Observations.
PLAN of a Parcel of land coloured pink in the Ward of Siparia
Containing four thousand and forty seven point nine square metres.
Surveyed by me, with due authority, in September, 2007
In accordance with Regulation 25(1) of the Land Surveyors' Regulations 1998,
I certify that this plan is correct.

Checked by *Reynold Bhikarry*
Reynold Bhikarry

Entered Trinidad & Tobago Land Surveyor . 20th November . . . 2007

CT. VOL. 5331 FOL. 487 - RABINDRANATH RAMBERAN



now 1439/139
~~1414/202~~