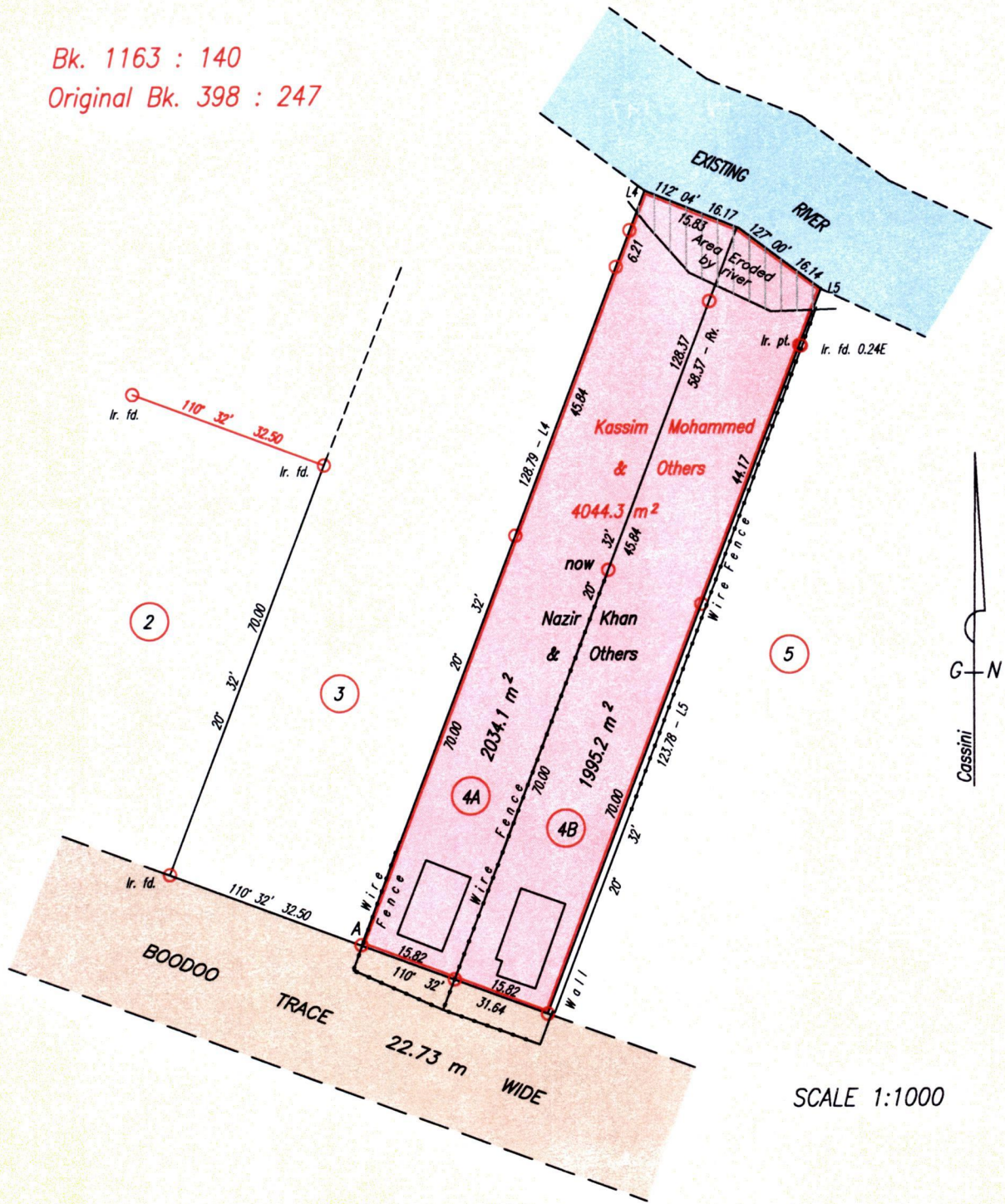


Vol. 5327 fol. 177
R.P.O. Vol. 149 Fol. 351
C.T. Vol. 4961 Fol. 245

Ward of Naparima
County of Victoria
Cadastral Sheet G.13.G. 63F
1/d

Bk. 1163 : 140
Original Bk. 398 : 247



SCALE 1:1000

Approved : *[Signature]*
Director of Surveys
2009.3.17

Point	U.T.M. WGS84 Coordinate		Accuracy
	Northing/m	Easting/m	
A	1126245.3	671407.1	± 5.2 m

Coordinates obtained by observation using hand held GPS.

○ denotes iron put except otherwise stated.

Bearings are Cassini Grid based on solar observations.

Distances are in Metres

Plan of two Parcels of land coloured pink in the Ward of Naparima
Containing together four thousand and twenty nine point three square metres.

Surveyed by me, with due authority, in February 2008.

In accordance with Regulation 25(1) of the Land Surveyors' Regulations 1998,
I certify that this plan is correct.

Checked by *[Signature]* 5/11/08

[Signature]

Entered

Trinidad & Tobago Land Surveyor 18th April .2008

Lot No.	Ct. Volume & Folio	NAMES
4A	5327 fol. 195	NAZIR & HANIFA KHAN
4B	5327 fol. 197	ZORIDA & LAWRENCE KALLICHARAN



Now 1A39/136
1427/221