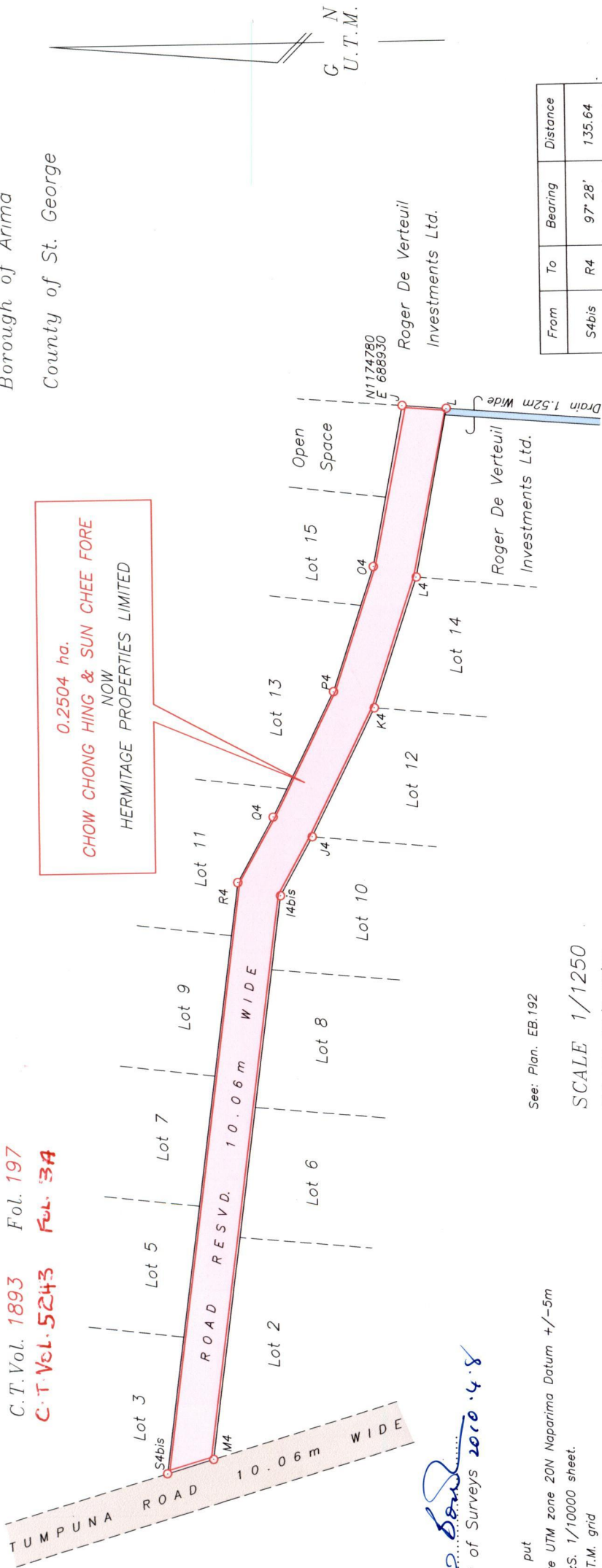


Cadastral Sheet B.25.A. $\frac{24C}{4/a}$

Borough of Arima
County of St. George



R.P.O. Vol. 11 Fol. 389
C.T. Vol. 1893 Fol. 197
C.T. Vol. 5243 Fol. 3A

0.2504 ha.
NOW
CHOW CHONG HING & SUN CHEE FORE
HERMITAGE PROPERTIES LIMITED

Approved

[Signature]
Director of Surveys 2010.4.8

See: Plan. EB.192

SCALE 1/1250
Distances are in metres

○ Denotes Iron put
Co-ordinates are UTM zone 20N Naparima Datum +/-5m
scaled from L&S. 1/10000 sheet.
Bearings are U.T.M. grid
Note: To obtain compass bearings add 28 minutes.

PLAN of a Parcel of land coloured pink in the Borough of Arima
Containing zero point two five zero four hectares

Prepared by me, with due authority, in December 2009 from surveys by Gonzales in July 1959 & March 1960
In accordance with Regulation 25 (1) of the Land Surveyors' Regulations 1998,

I certify that this plan is correct.

Checked by *[Signature]* 1/4/10

[Signature]
18th Dec 2009

Entered..... Trinidad & Tobago Land Surveyor.....

LISCO\Chersons Clico Hermitage\Hermitage Properties Ltd\Hermitage Properties Ltd

From	To	Bearing	Distance
S4bis	R4	97° 28'	135.64
R4	Q4	119° 18'	16.86
Q4	P4	116° 31'	31.58
P4	O4	108° 27'	29.81
O4	J	100° 56'	37.06
J	L	184° 37'	10.06
L	L4	280° 51'	38.83
L4	K4	288° 27'	31.21
K4	J4	296° 31'	32.52
J4	I4bis	299° 15'	15.15
I4bis	M4	277° 28'	129.30
M4	S4bis	343° 25'	11.00

