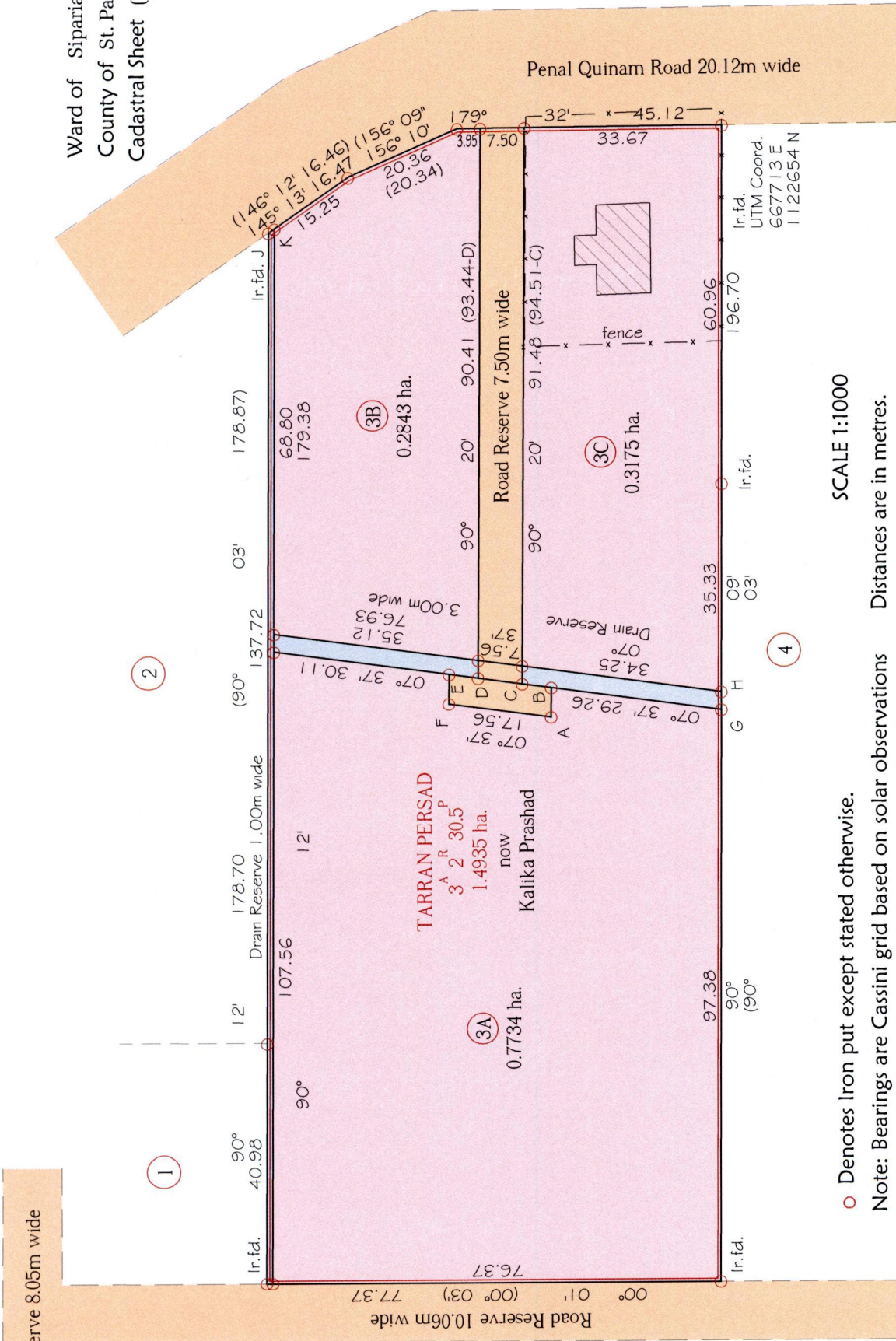


Ward of Siparia
County of St. Patrick
Cadastral Sheet (G.13.M), 53E
4/c&d



Road Reserve 8.05m wide

R.P.O Vol. 106 Fol. 529
C.T. Vol. 4501 Fol. 131
C.T VOL 5325 Fol 119

Ref. Bk. 1010 Fol. 194
Original in Bk 466 Fol. 192

STATION	BEARING	DISTANCE
A-B	90° 20'	5.00
B-C	07° 37'	5.00
C-D	07° 37'	7.56
D-E	07° 37'	5.00
F-E	90° 20'	5.00
G-H	90° 09'	3.03
J-K	145° 13'	1.22

Approved
[Signature]
Director of Surveys
2009.7.23

Note - UTM (WGS 84) Coordinates obtained from hand held GPS receiver + 5.00m

SCALE 1:1000

○ Denotes Iron put except stated otherwise.

Note: Bearings are Cassini grid based on solar observations Distances are in metres.

Plan of 3 Parcels of land coloured pink in the Ward of Siparia.

Containing together one point three seven five two hectares.

Surveyed by me, with due authority, in February 2007

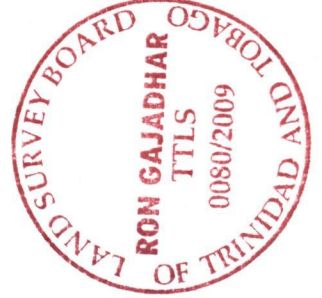
In accordance with Regulation 25(1) of the Land Surveyors' Regulations 1998,

I certify that this plan is correct.

Checked by *[Signature]* M.M. 21/7/09

Entered

Trinidad & Tobago Land Surveyor 3/07/2009



LOT #	C.T. VOL & Folio	NAMES.
3A		
3B	C.T. VOL 5325 Fol 127	Ramrattie Prashad Museub- Ali
3C		



1439/115
~~1500/113~~