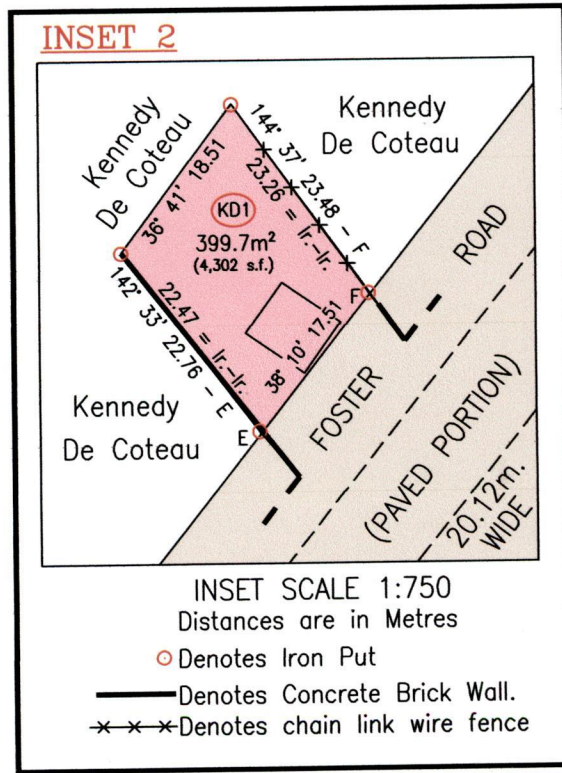
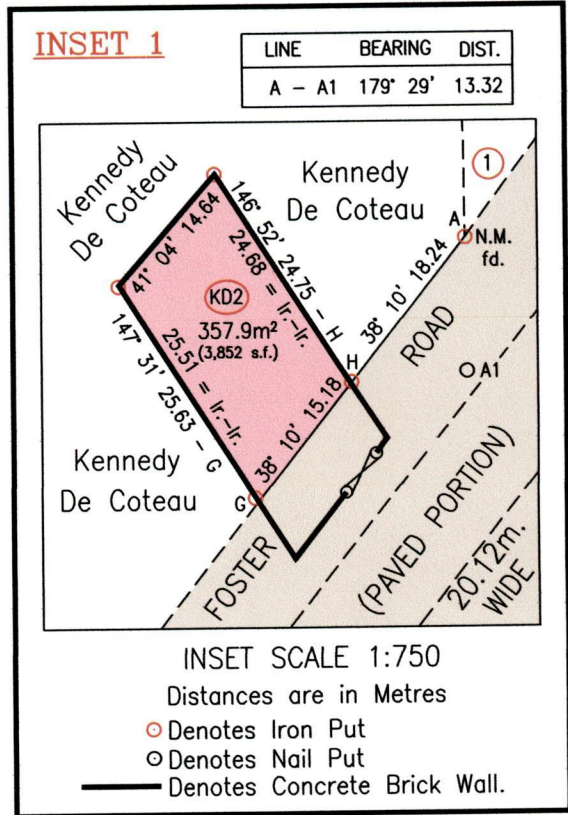


"E.P. No.43 FOSTER ROAD  
SANGRE GRANDE"

Vide	
Bk. 199:28	
Bk. 1110:26	
Plan F.J.29	



Approved

*[Signature]*  
Director of Surveys  
2011.1.2

E	705566
N	1172425

Reliability Error  $\pm 5.0$  m.

Coordinates are UTM, Naparima 1955 from Garmin GPSmap 60CSx Handheld GPS Receiver

Bearings are Cassini Grid based on Solar Obs.

○ Denotes Iron Put unless otherwise stated

Plan of 2 Parcels of land coloured pink in the Ward of Manzanilla Containing together seven hundred and fifty seven point six square metres Surveyed by me, with due authority, in December 2004 & February 2005 In accordance with Regulation 25(1) of the Land Surveyors' Regulations 1998, I certify that this plan is correct.

Checked by *mm* 18/1/11 *[Signature]*

Entered on ..... Trinidad & Tobago Land Surveyor 13<sup>th</sup> August 2010

SCALE 1:2500  
Distances are in Metres  
○ Denotes Nail Put



LOT #	C.T. VOL & FOLIO	NAMES
KDI	5377 fol 35	CARLYLE HENRY,



now 1439/111  
~~1376/21~~