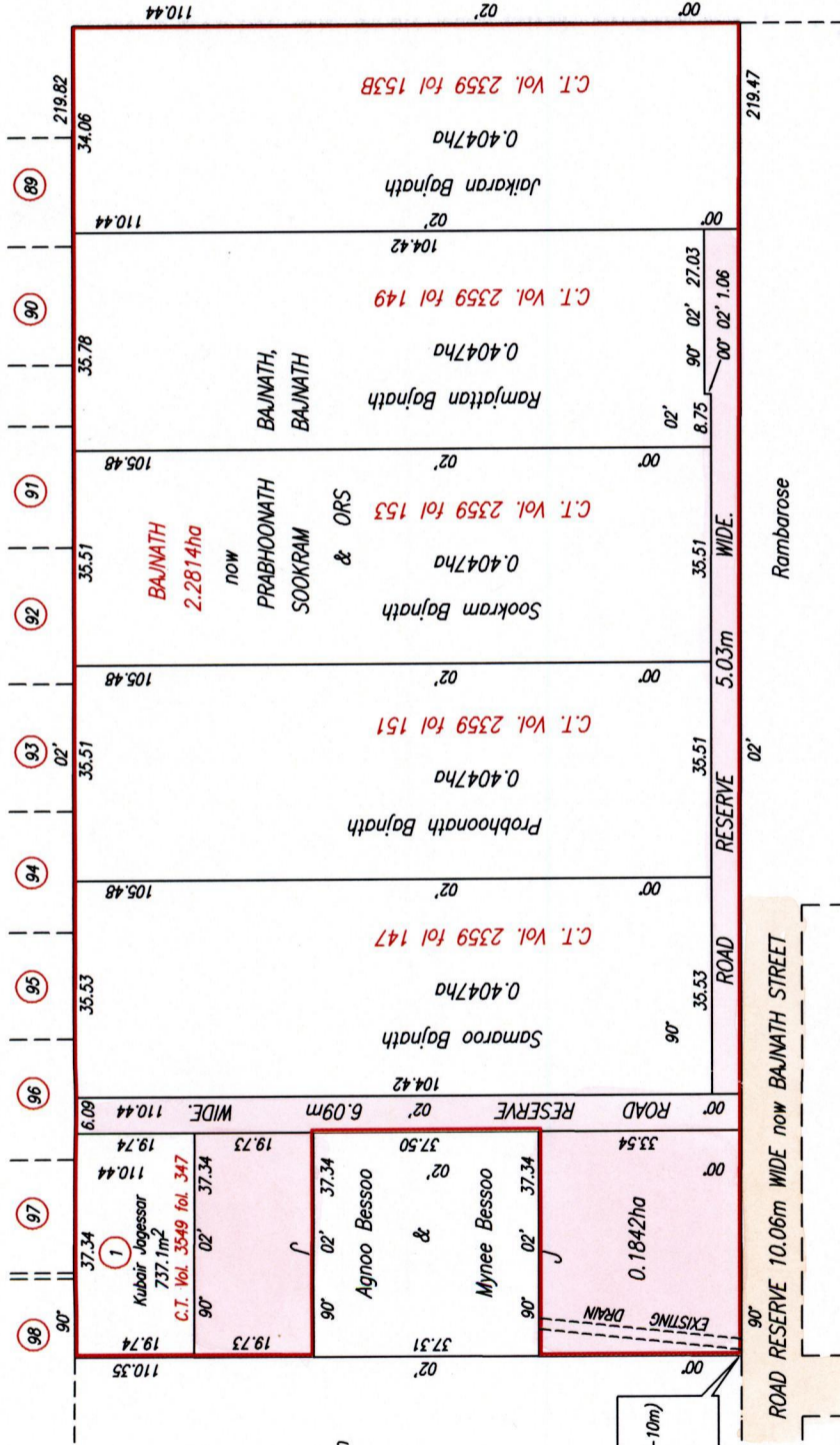


Vol. 5188 Fol. 441
 R.P.O. Vol. 77 Fol. 387
 C.T. Vol. 2359 Fol. 117
 Vide Bk. 1211 fol 1

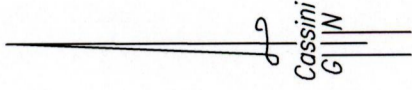
Remaining Portion

Cadastral Sheet G.13.J. 63F
 3/a
 Ward of Siparia
 County of St.Patrick.
Penal

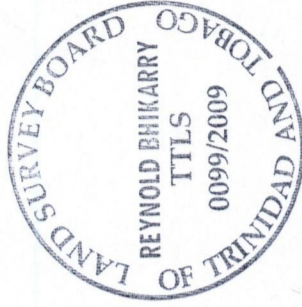


689080mE, 1124155mN
 (U.T.M. 20, Naparima (+/-10m)
 Coordinates scaled from
 Ward Sheet for
 Identification only.

1439



Shell Trinidad Limited
 then
 Robert Claude.



SCALE 1:1250
 Distances are in Metres

Approved
 Director of Surveys
 2009-7-23

This is a true diagram of two point two eight one four hectares originally granted to BAJNATH showing a portion coloured pink and containing zero point one eight four two hectare being the remainder after six previous transfers of other portions of the land. In accordance with Regulation 25(1) of the Land Surveyors' Regulations 1998, I certify that this plan is correct.

Checked by: *Ravindra Bishoo*
 20th June 2009

Entered Trinidad & Tobago Land Surveyor 2009

1083