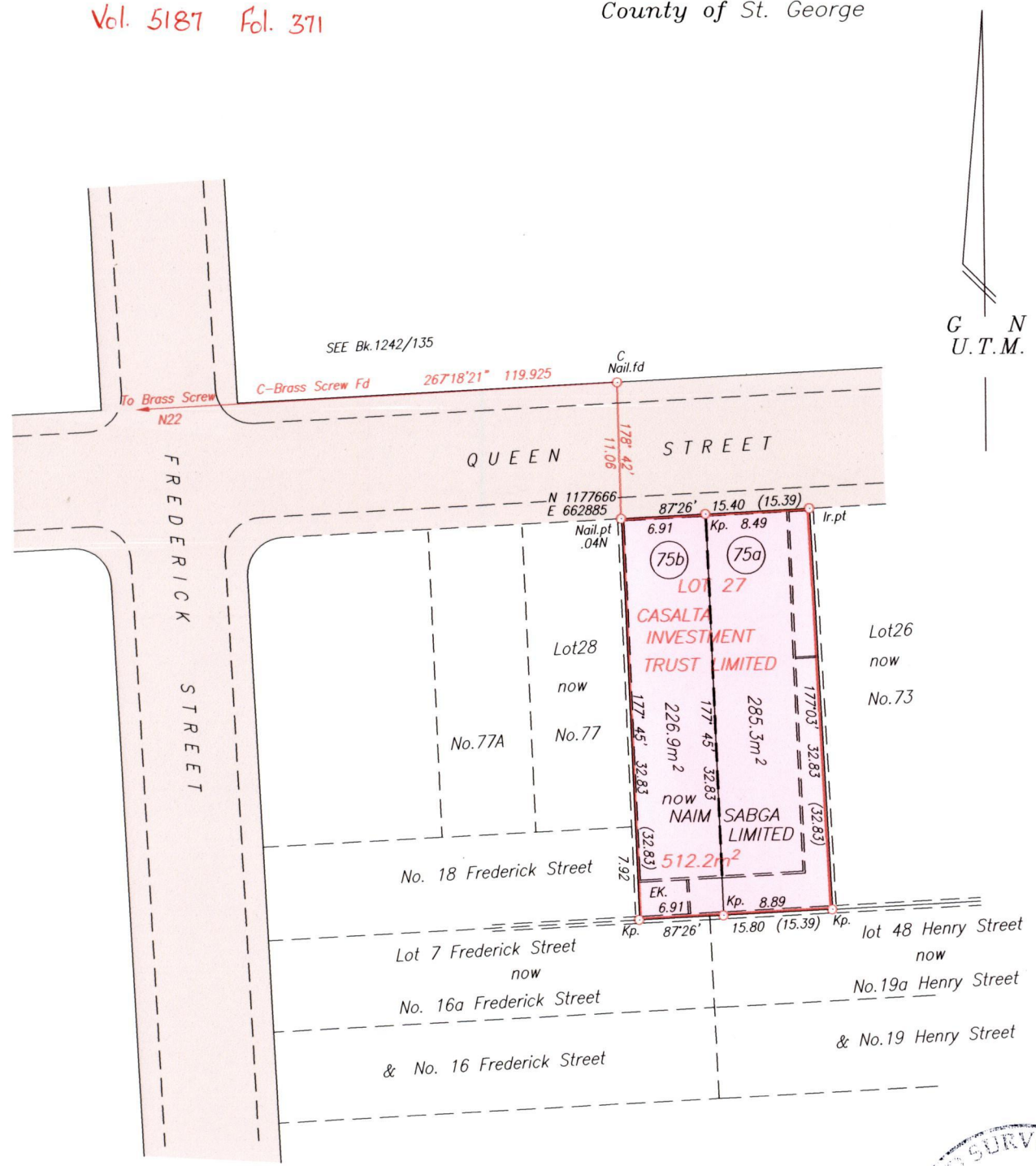


C.T. Vol. 4 Fol. 35
C.T. Vol. 1114 Fol. 517
Vol. 5187 Fol. 371

Cadastral Sheet A.20.J 23A
City of Port of Spain 2/b
County of St. George



G N
U.T.M.

Approved

[Signature]
Director of Surveys
2009-9-14



E. 662765.5
Brass Screw N22: N.1177671.9
EK. Electrical kiosk

Co-ordinates are UTM zone 20N Naparima Datum +/-1m based on Control Marks.
Bearings are U.T.M. grid based on Control Marks.

SCALE 1/500
Distances are in metres

PLAN of two Parcels of land coloured pink in the City of Port of Spain
Containing together five one two point two square metres
Surveyed by me with due authority in February 2003
In accordance with Regulation 25 (1) of the Land Surveyors' Regulation 1998,
I certify that this plan is correct.

Checked by *[Signature]* 21.09/08/19
Entered.....

[Signature]
Trinidad & Tobago Land Surveyor. 1st May 2009

LOT No.	CT. VOLUME & FOLIO	NAMES
75a		
75b		



Now 1439/105
1500/197