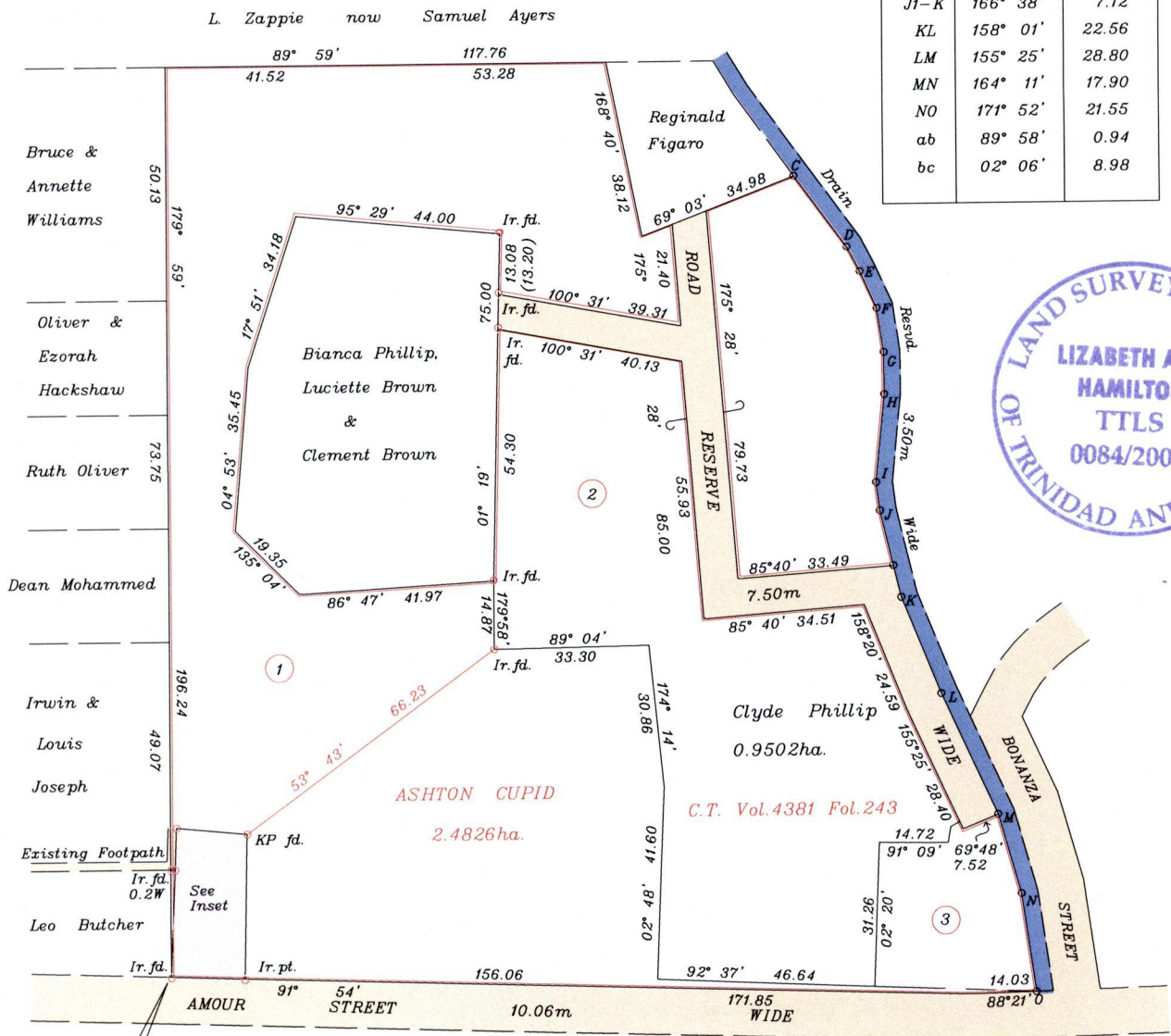


Bk. 1229/216

Bk. 1282/44

Line	Bearing	Distance
CD	143° 30'	19.00
DE	152° 41'	6.03
EF	155° 41'	8.72
FG	171° 16'	9.63
GH	179° 53'	9.04
HI	185° 39'	19.06
IJ	172° 48'	6.17
J-J1	166° 38'	12.24
J1-K	166° 38'	7.12
KL	158° 01'	22.56
LM	155° 25'	28.80
MN	164° 11'	17.90
NO	171° 52'	21.55
ab	89° 58'	0.94
bc	02° 06'	8.98

Cassini
G N



677 680E
1 135 170N

Approved *[Signature]*
Director of Surveys
2008.03.25

SCALE 1:1500

Co-ordinates are U.T.M. Zone 20 Naparima Datum +/-5m scaled from L&S 1/10,000 sheets

o denotes Ir. pt. unless otherwise stated

Bearings are Cassini Grid based on Solar Observations

Distances are in metres

PLAN of a Parcel of land coloured pink in the Ward of Savana Grande

Containing five hundred and four point two square metres

Surveyed by me, with due authority, in May 2007

In accordance with Regulation 25(1) of the Land Surveyors' Regulations 1998,

I certify that this plan is correct.

Checked by *[Signature]*

[Signature]

Entered

Trinidad & Tobago Land Surveyor March 10 2008

LOT. No. CT. VOL. 5412 FOL. 439 - LEO BUTCHER



now 1439/102
427/9