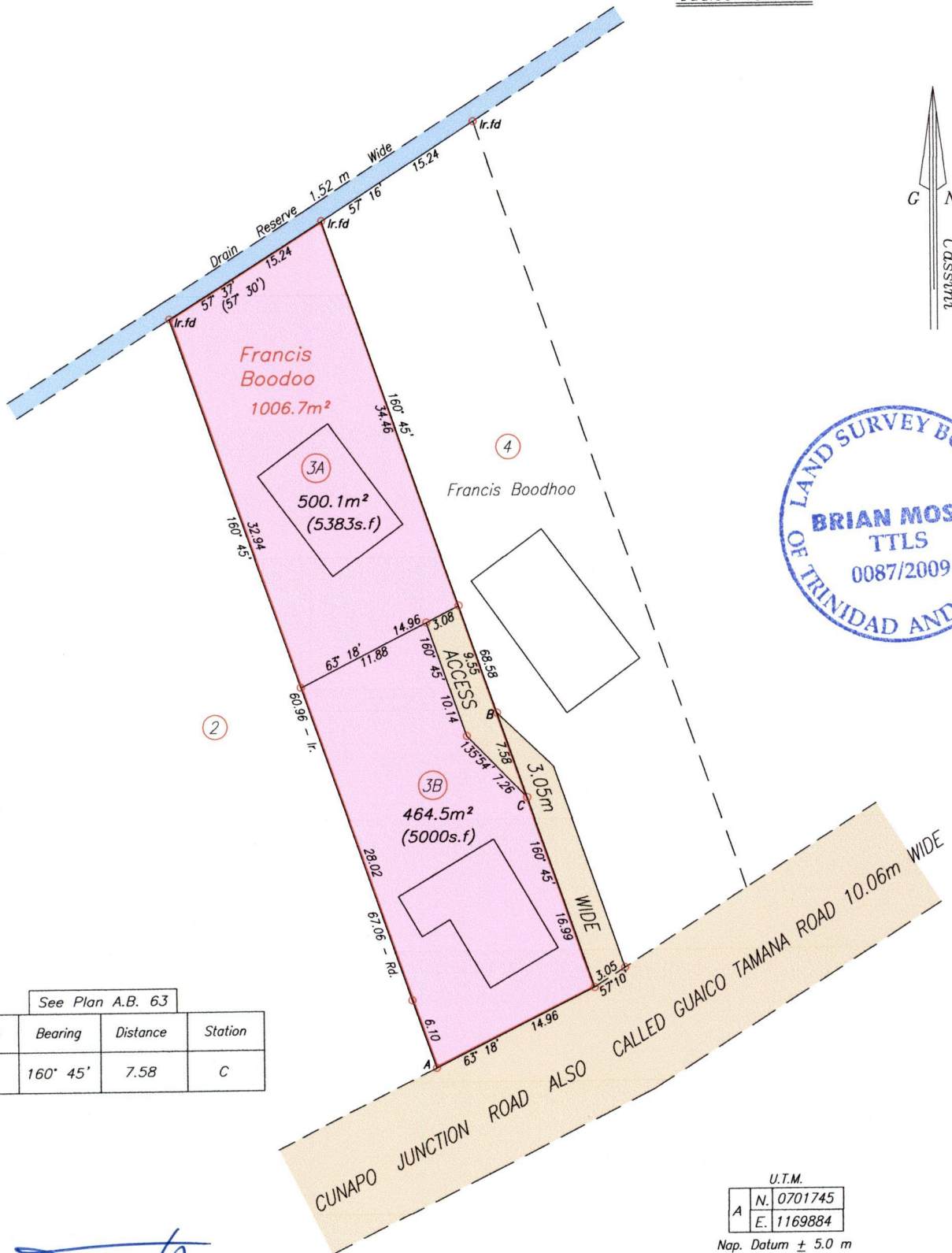


R.P.O. Vol. 106 Fol. 387
C.T. Vol. 2403 Fol. 131
Vol. 5210 Fol. 31

Cadastral Sheet E.1.D. 25E
2/d
Ward of Tamana
County of St Andrew

Guaico Tamana



See Plan A.B. 63

Station	Bearing	Distance	Station
B	160° 45'	7.58	C

U.T.M.

A	N. 0701745
	E. 1169884

Nap. Datum ± 5.0 m
Hand held G.P.S.

Approved.....
Director of Surveys
2009.8.12

SCALE 1/500
Distances are in metres

○ Denotes Iron Put unless otherwise stated
Bearings are Cassini Grid based on Solar Observations
Plan of 2 Parcels of land coloured pink in the Ward of Tamana
Containing together nine six four point six square metres
Surveyed by me, with due authority, in January 2008
In accordance with Regulation 25 (1) of the Land Surveyors' Regulations 1998,
I certify that this plan is correct.

Checked By.....
16/8/07

.....
16th July 2009

Entered On..... Trinidad & Tobago Land Surveyor.....

LOT No.	Ct. VOLUME & FOLIO	NAMES
3A	5210 fol. 41	BACHANI BOODOO
3B	5443 fol. 115	FLORENCE LIVERPOOL



Now 1439/10
1500/10