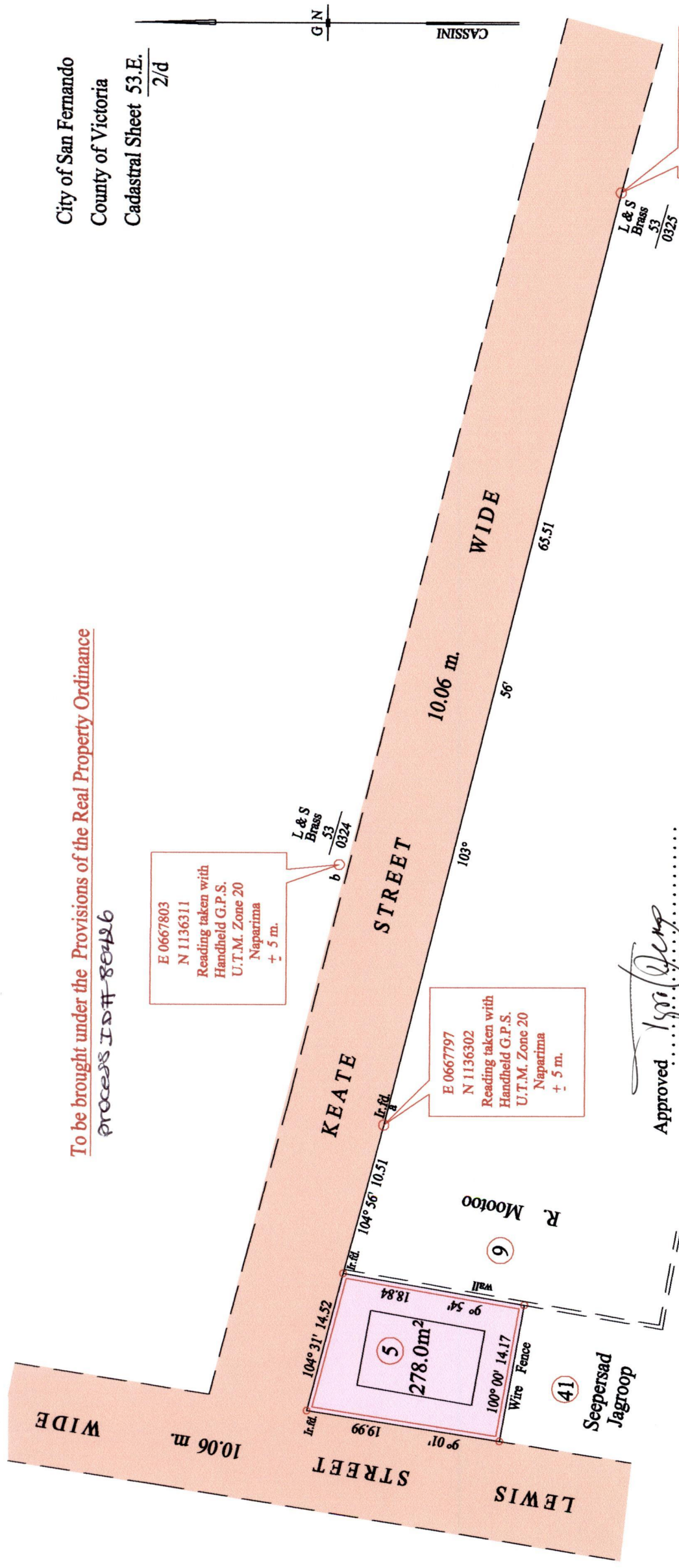


1436

42

City of San Fernando
County of Victoria
Cadastral Sheet 53.E.
2/d

To be brought under the Provisions of the Real Property Ordinance
Process ID# 80426



E 0667871
N 1136284
Reading taken with
Handheld G.P.S.
U.T.M. Zone 20
Naparima
± 5 m.

E 0667803
N 1136311
Reading taken with
Handheld G.P.S.
U.T.M. Zone 20
Naparima
± 5 m.

E 0667797
N 1136302
Reading taken with
Handheld G.P.S.
U.T.M. Zone 20
Naparima
± 5 m.

Approved *[Signature]*
Director of Surveys
2009.5.27

a - b 82° 05' 23.68

SCALE : 1:500

Note: Bearings are cassini grid based on solar observations Distances are in metres

PLAN of a Parcel of land coloured pink in the City of San Fernando
Containing two hundred and seventy eight point zero square metres
Surveyed by me, with due authority, on 23rd October 2008 for Donald Seepersad Jagroop

In accordance with Regulation 25 (1) of the Land Surveyors' Regulations 1998, I certify that this plan is correct.



Checked by *[Signature]* 18/5/09

Entered on Trinidad & Tobago Land Surveyor 2009