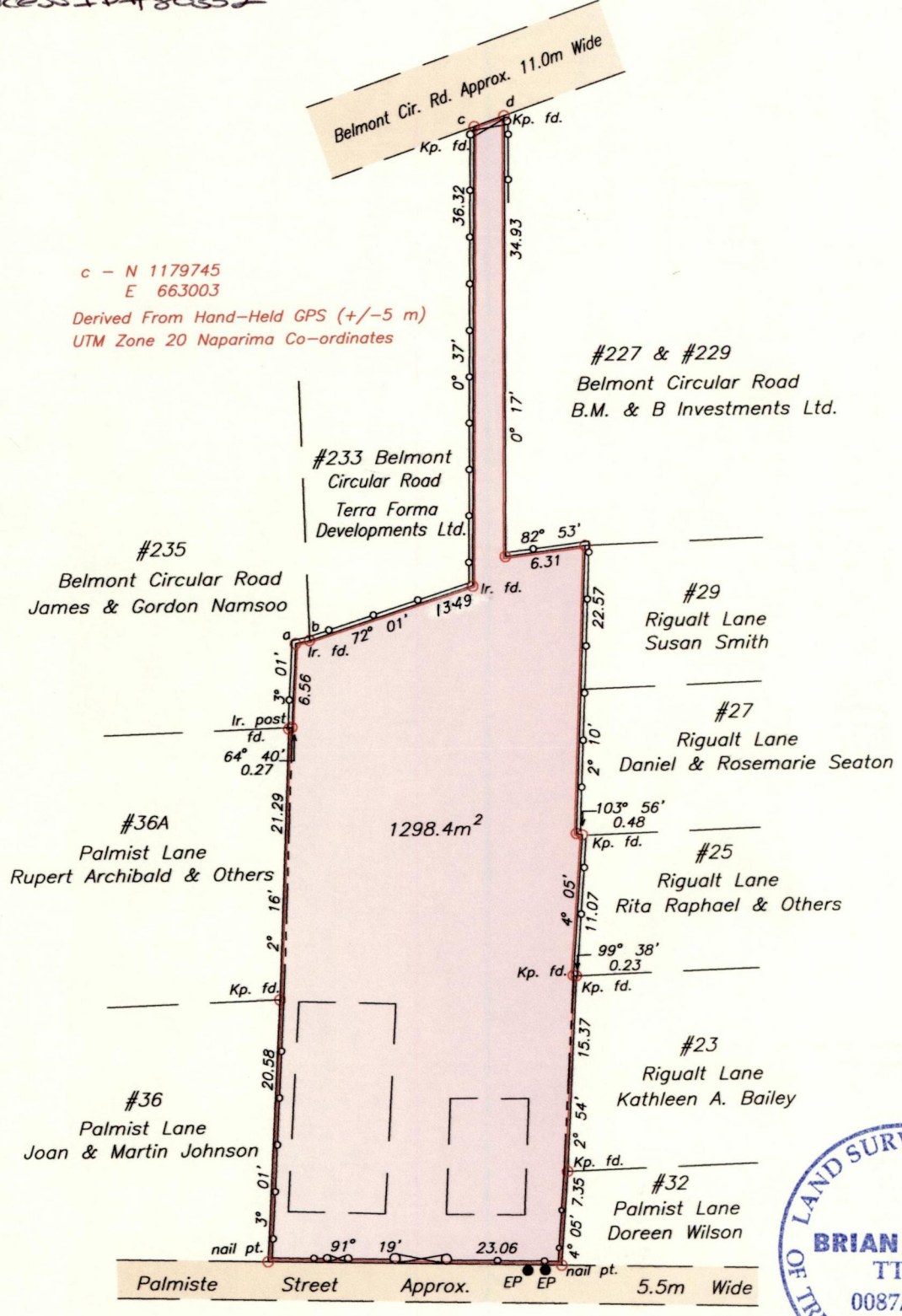


To be brought under the provisions of The Real Property Ordinance

Cadastral Sheet A.20.G. 13/D 4/d
City of Port of Spain
County of St. George

PROCESS ID # 80332



Approved *Terra Deo*
Director of Surveys 2009.3.18

- EP - Electricity Pole
- Wall
- - - Galvanise Fence
- ⊃ Gate

Legend

a - b	78° 37'	1.12
c - d	70° 22'	2.51

SCALE 1:500
Distances are in METRES

○ Denotes Iron put unless otherwise stated
Bearings are Cassini Grid based on Solar observations

PLAN of a Parcel of land coloured pink in the City of Port of Spain
Containing one thousand two hundred and ninety eight point four square metres
Surveyed by me, with due authority, on 9th April 2006 for Vida Gormandy
In accordance with Regulation 25 (1) of the Land Surveyors' Regulations 1998,
I certify that this Plan is correct.

Checked by *Ashe* 16/3/09

Brian Moses T.T.L.S.

Entered on Trinidad & Tobago Land Surveyor *16th July* 2008