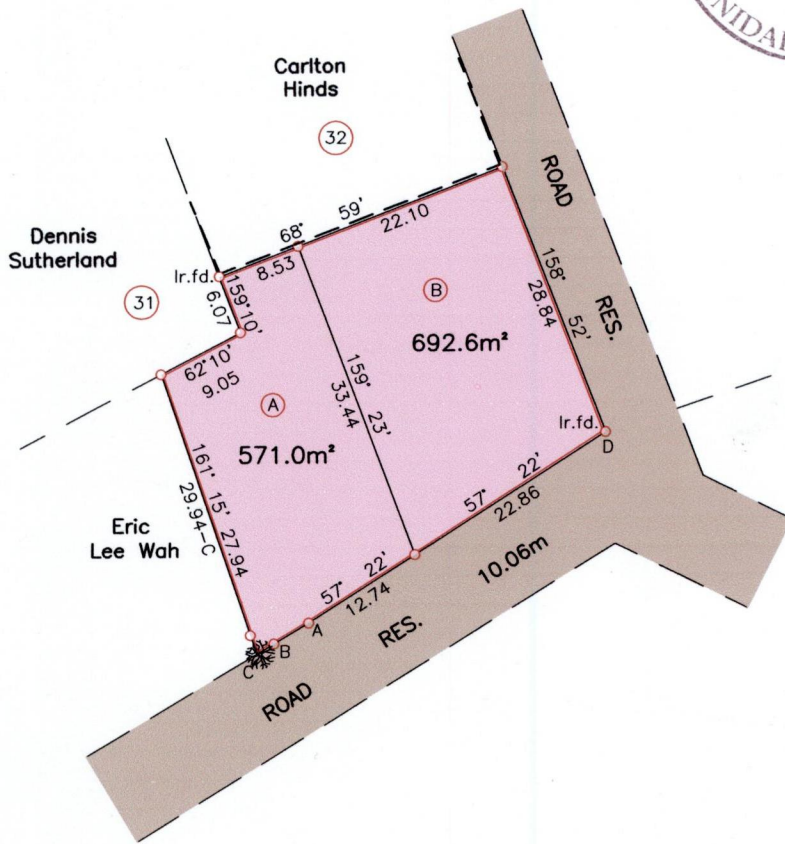


Ref:L&S BK 1025 Fol.174

LA PASTORA, SANTA CRUZ



A-B	239' 04' 4.10
A-C	239' 04' 6.10

Ir.fd.=D:- N:1185684m
 E:666537m
 UTM 20, NAP Datum ± 7m
 GPS (Hand Held)

Wall - - - - -
 Large Tree -

Approved
 4 Director of Surveys 2010.8.12

SCALE 1/750

Distances are in Metres

o Denotes Iron put except otherwise stated
 Bearings are Cassini Grid based on Solar Observations
 Plan of two Parcels of land coloured pink in the Ward of St. Anns
 Containing together zero point one two six four hectare
 Surveyed by me with due authority, in September 2009 for Phillip Lee Wah
 In accordance with Regulation 25 (1) of the Land Surveyors' Regulations 1998,
 I certify that this plan is correct.

Checked by 29/7/10

Entered..... Trinidad & Tobago Land Surveyor September 28, 2009