

1436

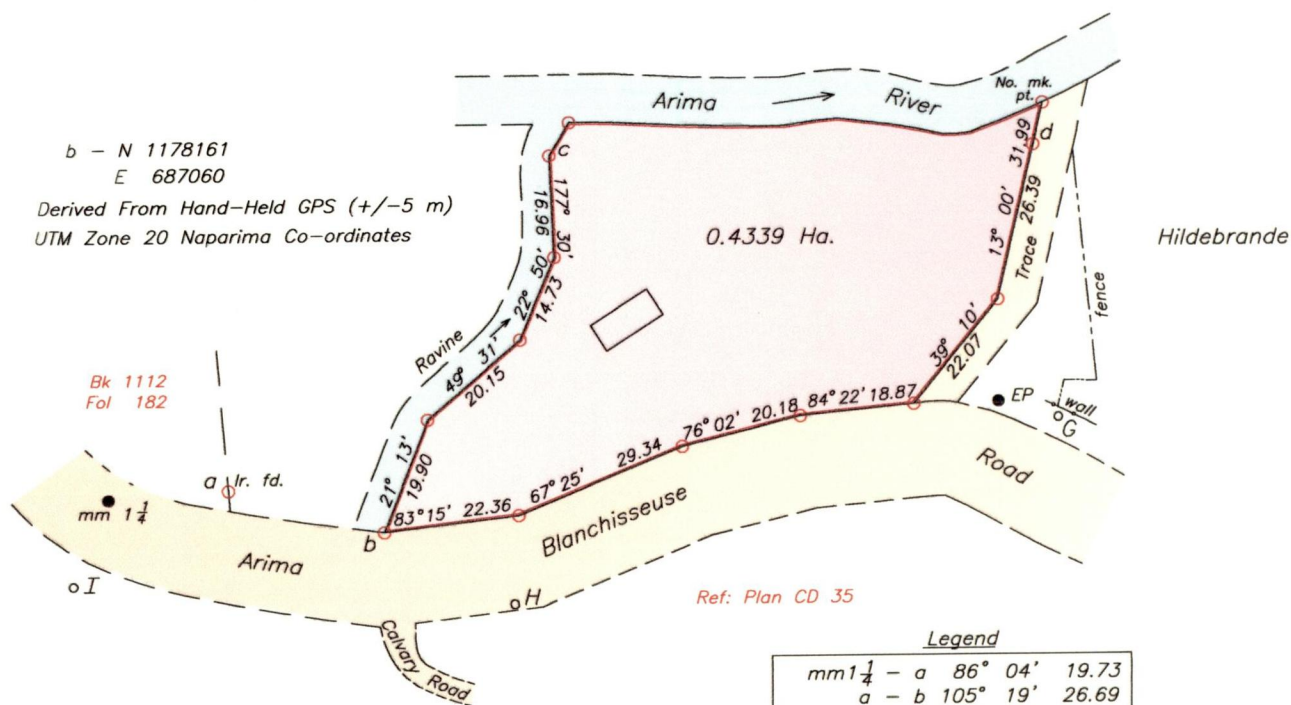
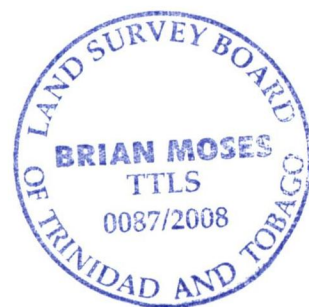
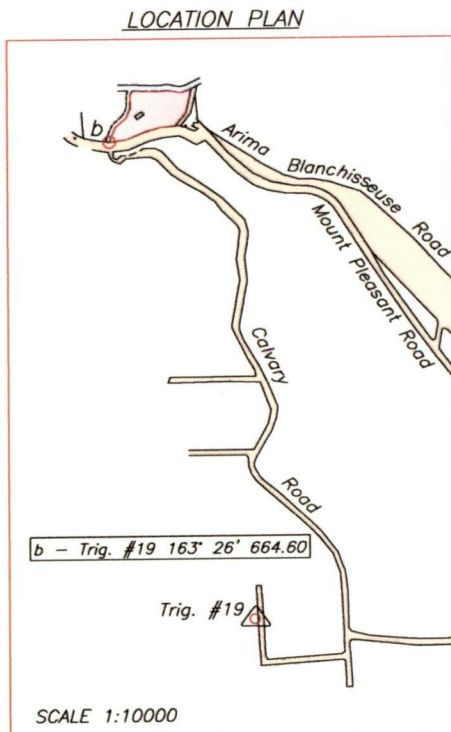
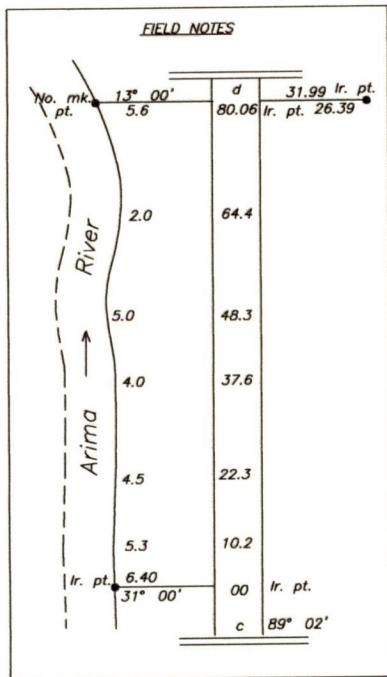
2017

Process ID# 80772

U.P.R.N.....

Cadastral Sheet B.19.L. $\frac{14F}{3/d}$
Borough of Arima
County of St. George

To be brought under the provisions
of The Real Property Ordinance



Legend

mm 1 1/4 - a	86° 04'	19.73
a - b	105° 19'	26.69
c - d	89° 02'	80.06
b - I	260° 26'	51.90
I - H	92° 42'	72.78
H - G	71° 27'	94.95

Stations I, H & G taken from plan CD 35

Approved Director of Surveys 2010.6.4

- o Pegs
- mm - Mile Mark
- EP - Electricity Pole

o Denotes Iron put unless otherwise stated
Bearings are Cassini Grid based on Solar observations

SCALE 1:1250
Distances are in METRES

PLAN of a Parcel of land coloured pink in the Borough of Arima
Containing zero point four three three nine hectares
Surveyed by me, with due authority, on 26th February, 2006 for Veronica Thomas
In accordance with Regulation 25 (1) of the Land Surveyors' Regulations 1998,
I certify that this Plan is correct.

Checked by 2010.5.10

T.T.L.S.
30th June 2008
Trinidad & Tobago Land Surveyor

Entered on