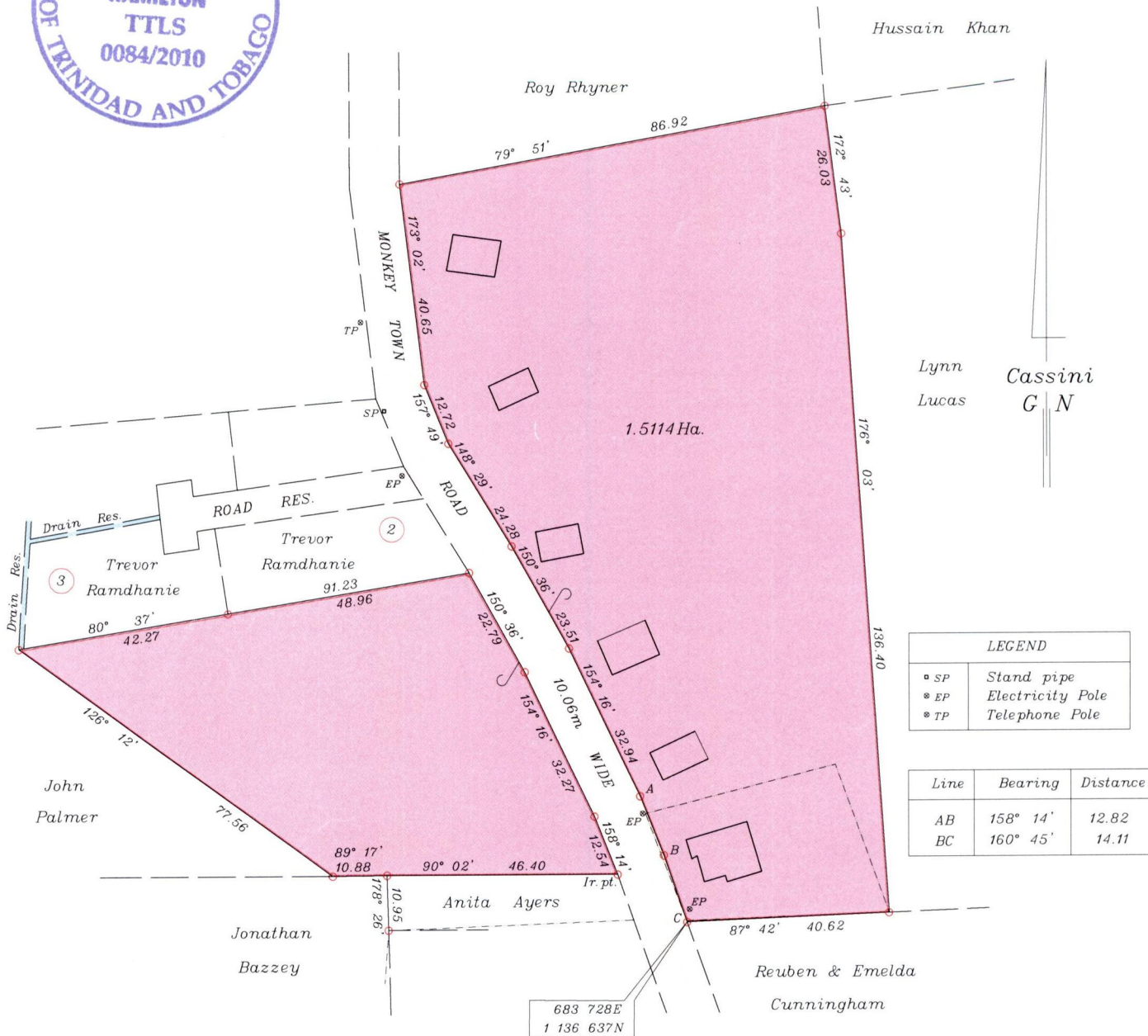


Process ~~1074~~ 80746

To be brought under the provisions of the Real Property Ordinance

Ward of Ortoire  
County of Victoria  
Cadastral Sheet G.5.J.,  $\frac{54E}{2/c}$

VIDE Bk.1112 fol.143  
Bk.1261 fol.224  
Bk.1228 fol.123



LEGEND	
• SP	Stand pipe
• EP	Electricity Pole
• TP	Telephone Pole

Line	Bearing	Distance
AB	158° 14'	12.82
BC	160° 45'	14.11

Approved   
Director of Surveys 2010.5.27

----- Chain Link Fence

Co-ordinates are U.T.M. Zone 20 Naparima Datum +/-5m scaled from handheld G.P.S.

SCALE 1:1250

• denotes Ir.f.d. unless otherwise stated

Bearings are Cassini Grid based on Solar Observations

Distances are in metres

PLAN of a Parcel of land coloured pink in the Ward of Ortoire

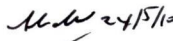
Containing one point five one one four hectares

Surveyed by me, with due authority, on June 20, 2009 for George Le Gendre

and Mark Le Gendre

In accordance with Regulation 25(1) of the Land Surveyors Regulations 1998,

I certify that this plan is correct.

Checked by  24/5/10

Entered .....

Trinidad & Tobago Land Surveyor ..... 2009