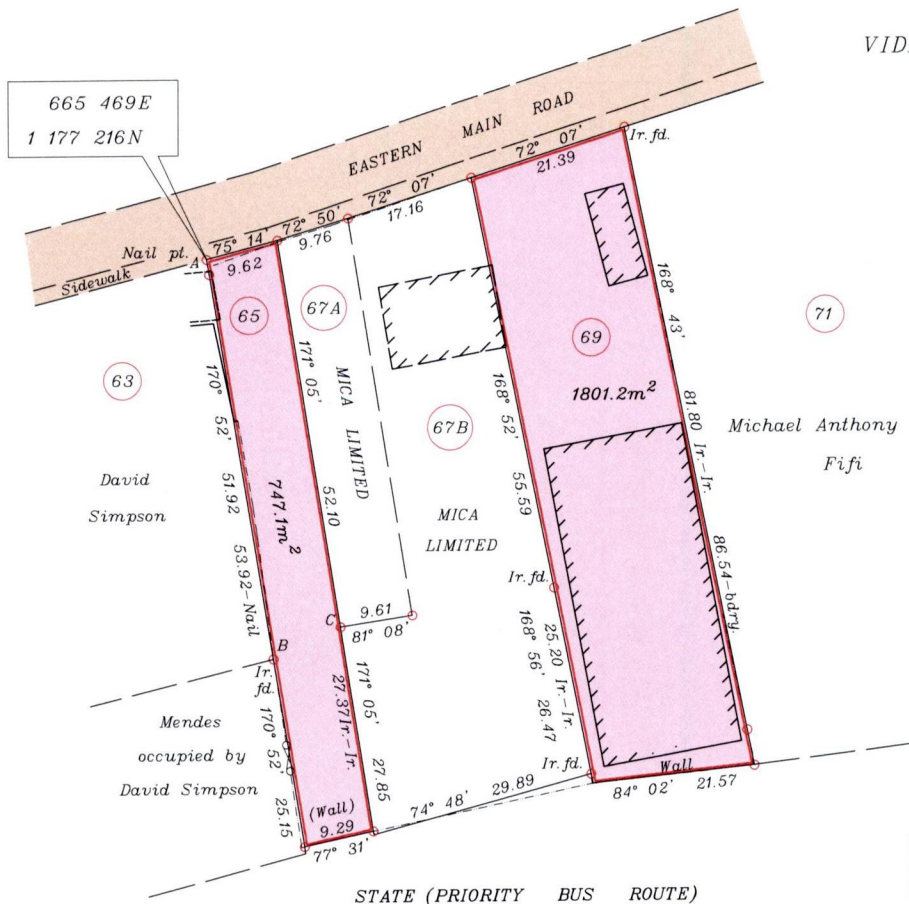


Process ID# 80691

To be brought under the provisions of the Real Property Ordinance

City of Port of Spain
County of St. George
Cadastral Sheet A.20.P., 23B
1/b

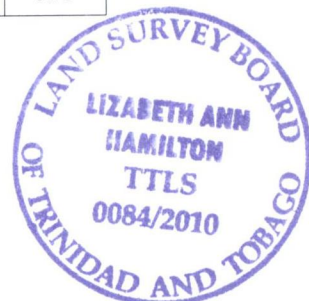
VIDE Bk.1149 fol.208
Bk.1016 fol.159



LEGEND	
	Wall
	Gate

Line	Bearing	Distance
BC	64° 27'	9.78

Approved Director of Surveys 2010.4.21



Co-ordinates are U.T.M. Zone 20 Naparima Datum +/- 3.0m obtained from handheld G.P.S.

SCALE 1:1000

o denotes Ir.pt. unless otherwise stated

Bearings are Cassini Grid based on Solar Observations

Distances are in metres

PLAN of 2 Parcels of land coloured pink in the City of Port of Spain

Containing (1) one thousand eight hundred and one point two square metres

(2) seven hundred and forty seven point one square metres

Surveyed by me, with due authority, on June 04 2009 for Mica Limited

In accordance with Regulation 25(1) of the Land Surveyors Regulations 1998,

I certify that this plan is correct.

Checked by 20/4/10

Entered

Trinidad & Tobago Land Surveyor February 24 2010