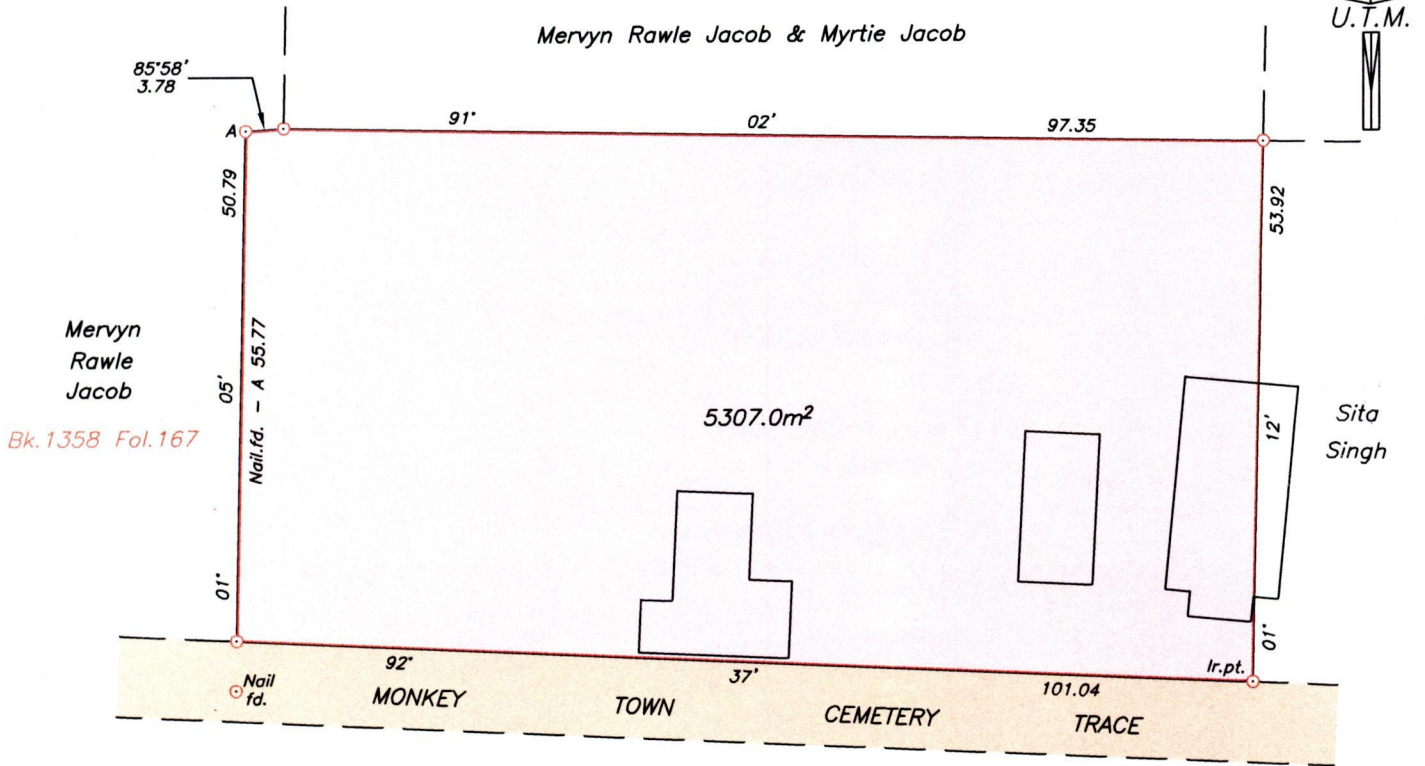


Process ~~FD#~~ 80681

To be brought under The Provisions
Of The Real Property Ordinance

Cadastral Sheet G.8.P. $\frac{63C}{4/a,4/b}$
Ward of Naparima
County of Victoria



Approved *[Signature]*
Director of Surveys 2010.4.7

SCALE 1/750
Distances are in metres

Co-ordinates obtained by Hand Held G.P.S. (WGS84 U.T.M. Zone 20)

Point A
Accuracy ± 8m
E 673034m
N 1129329m

Note: To obtain cassini bearings + 18 minutes

○ Denotes Iron found except otherwise stated

Bearings are U.T.M. based on Solar Observations

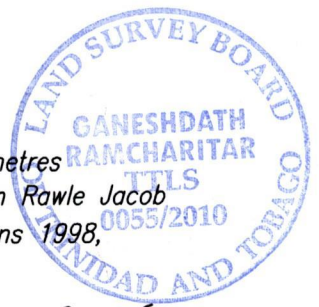
Plan of a Parcel of land coloured pink in the Ward of Naparima

Containing five thousand three hundred and seven point zero square metres

Surveyed by me, with due authority, on 13th February 2009 for Mervyn Rawle Jacob

In accordance with Regulation 25 (1) of the Land Surveyors' Regulations 1998,

I certify that this plan is correct.



Entered on

Checked by *[Signature]* 4/2
Trinidad & Tobago Land Surveyor 2010