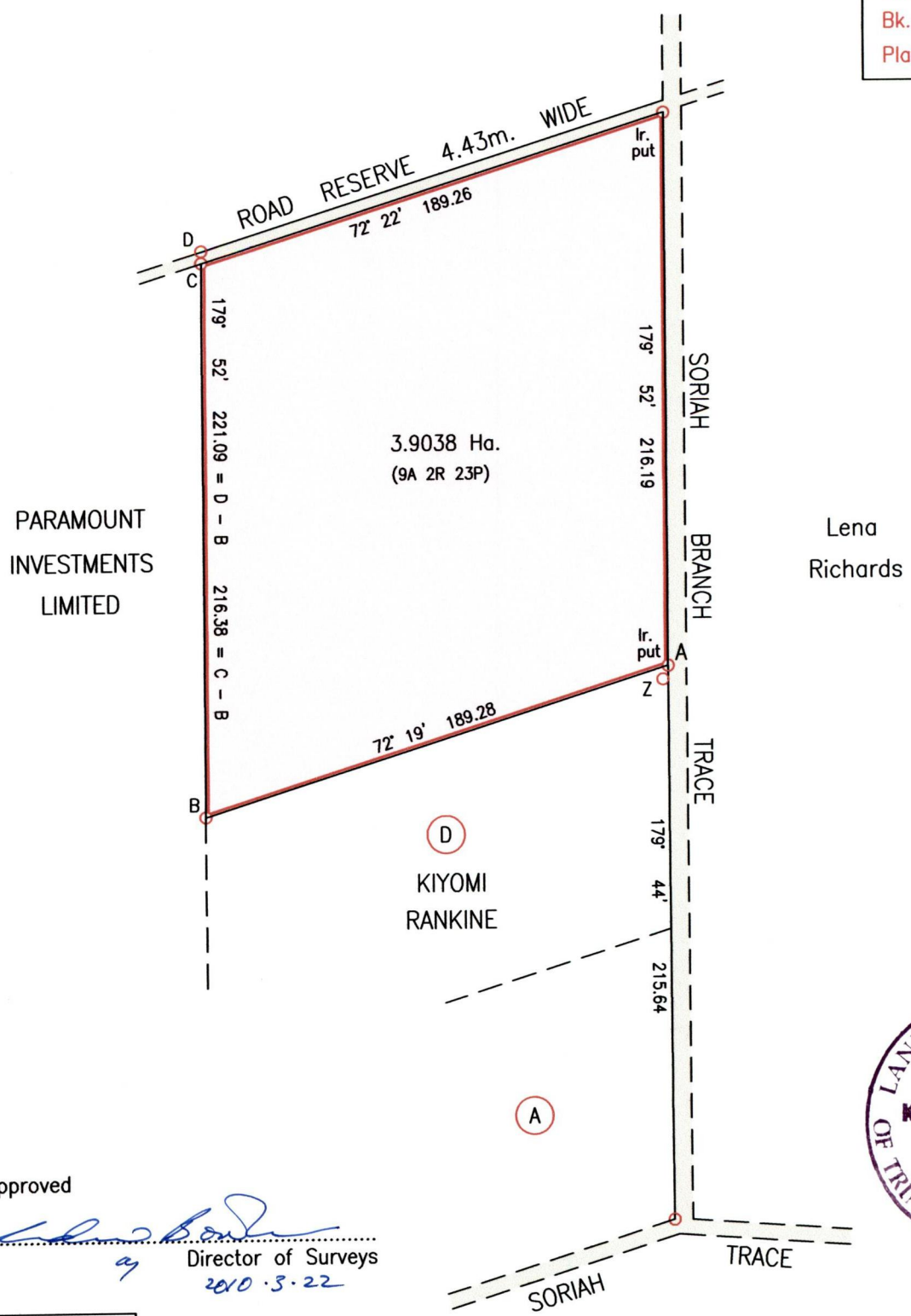
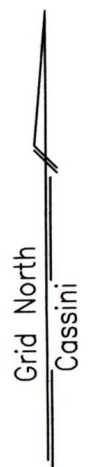


Process ID# 80654  
 TO BE BROUGHT UNDER THE PROVISIONS OF  
 THE REAL PROPERTY ORDINANCE  
 U.P.I.N. No.

1430 176  
 Cadastral Sheet  $\frac{24F}{3/b \ \& \ 3/d}$ , D.4.H.  
 Ward of San Rafael  
 County of St. George

1/4 M.M. SORIAH BRANCH TRACE OFF  
SORIAH TRACE, BRAZIL VILLAGE

Vide
Bk. 11:84
Bk. 726:24
Plan P.F.99



Approved  
  
 Director of Surveys  
 2010.5.22



A	E 687903
	N 1167788

LINE	BEARING	DIST.
A - Z	201° 38'	5.66

Reliability Error  $\pm 2.0$  m.  
 Coordinates are UTM, Naparima 1955 from  
 Garmin GPSmap 60CSx Handheld GPS Receiver

SCALE 1:2500  
 Distances are in Metres

Bearings are Cassini Grid based on Solar Obs.  
 ○ Denotes Iron found unless otherwise stated  
 Plan of a Parcel of land coloured pink in the Ward of San Rafael  
 Containing three point nine zero three eight hectares  
 Surveyed by me, with due authority, on 24th October 2009 for Ashram Bally  
 In accordance with Regulation 25(1) of the Land Surveyors' Regulations 1998,  
 I certify that this plan is correct.

Checked by *12.5.3.1.a*  
 Entered on ..... Trinidad & Tobago Land Surveyor *27<sup>th</sup> October* 2009