

1436

159

To be brought under the Provisions of the Real Property Ordinance

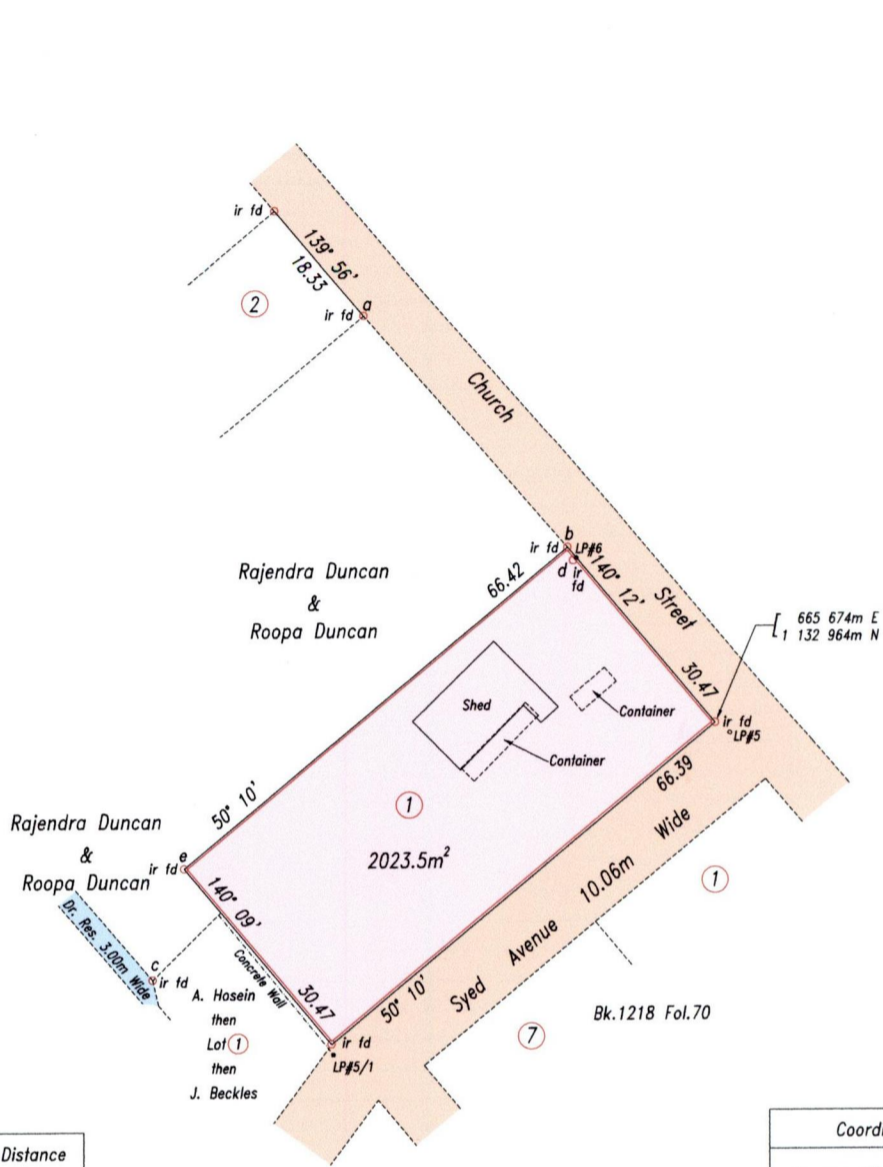
Ward of Naparima

County of Victoria

Cadastral Sheet G.7.D. 63B
1/b/2

U.P.I.N. No.:

PROCESS 10# 80675



Sta.- Sta.	Bearing	Distance
a - b	138° 59'	41.15
b - d	156° 44'	1.92
c - d	45° 12'	78.87
c - e	15° 50'	15.38

Coordinate Information
Source: GPS (Hand Held)
Error Statement: +/- 5m
Datum: Naparima, UTM (Zone 20)

Reference: Bk.1118 Fol.90

Approved 
 Director of Surveys 2010.3.17

SCALE 1: 1000

Distances are in metres

○ Denotes iron put except otherwise stated

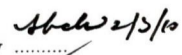
Bearings are Cassini Grid based on Solar Observations

PLAN of a parcel of land coloured pink in the Ward of Naparima

Containing two thousand and twenty three point five square metres

Surveyed by me, with due authority, on October 20th, 2009 for David Bhagwandass & Deana Bhagwandass

In accordance with Regulation 25(1) of the Land Surveyors' Regulations 1998, I certify that this plan is correct.

Checked by 
 Entered on


 Trinidad & Tobago Land Surveyor 14/1/2010

