

1436

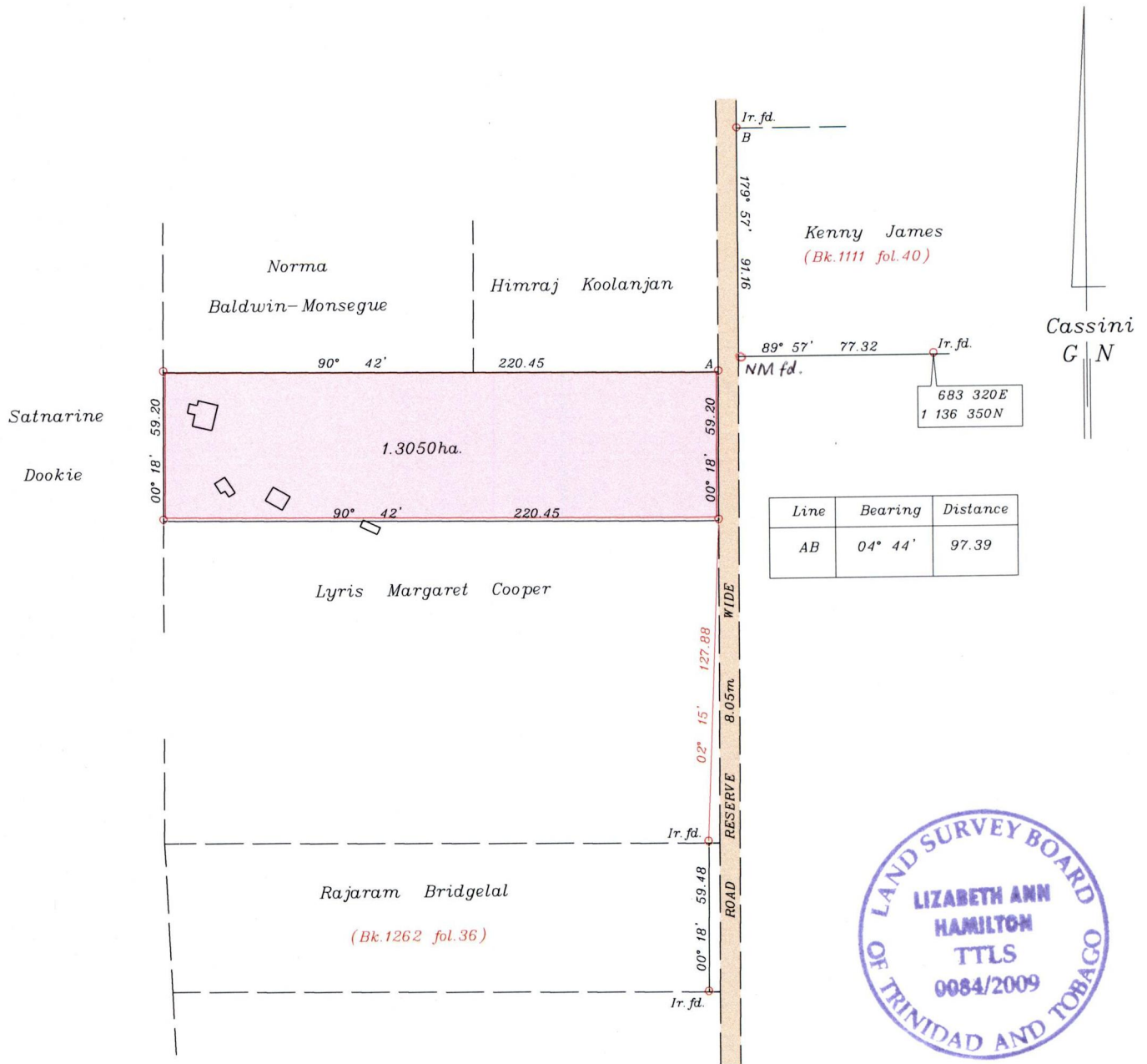
149

To be brought under the provisions
of the Real Property Ordinance

PROCESS 10# 80648

Ward of Ortoire
County of Victoria
Cadastral Sheet G.5.J., $\frac{54E}{2/c}$

R.D. 1908 of 1906



Approved
[Signature]
Director of Surveys 2010.3.16

SCALE 1:2500

Co-ordinates are U.T.M. Zone 20 Naparima Datum +/-5m scaled from L&S 1/10,000 sheets

o denotes Ir. put unless otherwise stated

Bearings are Cassini Grid based on Solar Observations Distances are in metres

PLAN of a Parcel of land coloured pink in the Ward of Ortoire

Containing one point three zero five zero hectares

Surveyed by me, with due authority, on November 23, 2007 for Rupert Fortune

In accordance with Regulation 25(1) of the Land Surveyors' Regulations 1998,

I certify that this plan is correct.

Checked by *[Signature]*

[Signature]

Entered

Trinidad & Tobago Land Surveyor June 04 2008

