

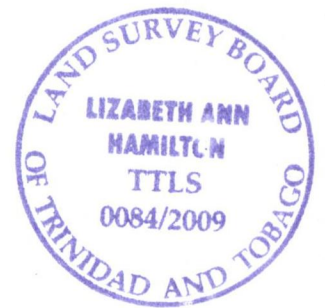
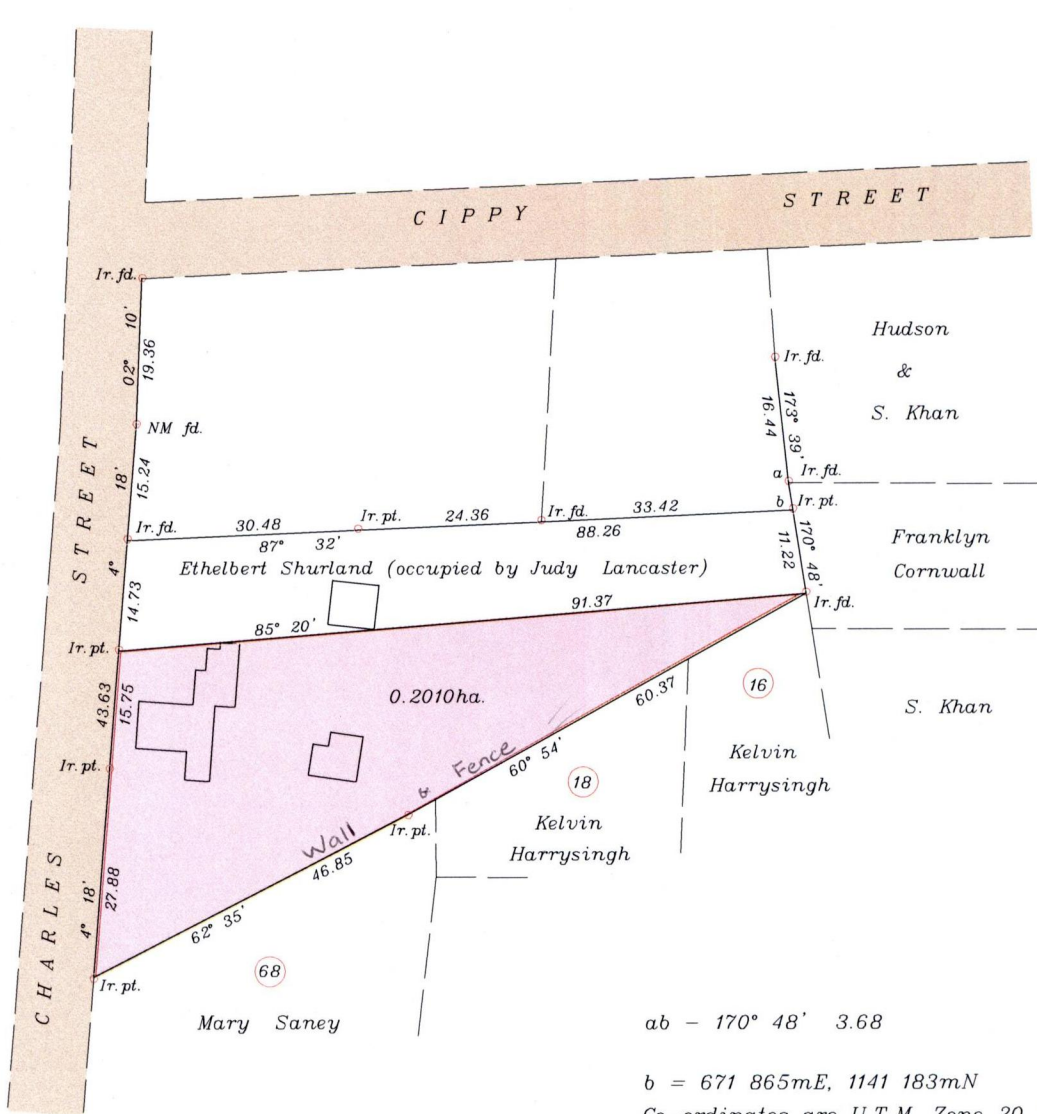
To be brought under the provisions of the Real Property Ordinance

Ward of Pointe a Pierre
County of Victoria

PROCESS 10# 80640

Cadastral Sheet D.22.N/ 53C
4/a

VIDE Bk.1002 Fol.161
Bk.1049 Fol.210
Bk.1002 Fol.162



ab - 170° 48' 3.68

b = 671 865mE, 1141 183mN

Co-ordinates are U.T.M. Zone 20 Naparima Datum +/-5m scaled from L&S 1:2500 mapping

Approved

[Signature]
 Director of Surveys 2010.3.15

SCALE 1:1000

Bearings are Cassini Grid based on Solar Observations

Distances are in metres

PLAN of a Parcel of land coloured pink in the Ward of Pointe a Pierre
Containing zero point two zero one zero hectares

Surveyed by me, with due authority, on July 27 2006 for Judy Lancaster

In accordance with Regulation 25(1) of the Land Surveyors' Regulations 1998,

I certify that this plan is correct.

Checked by 16.23.2.10

[Signature]

Entered

Trinidad & Tobago Land Surveyor July 15 2008