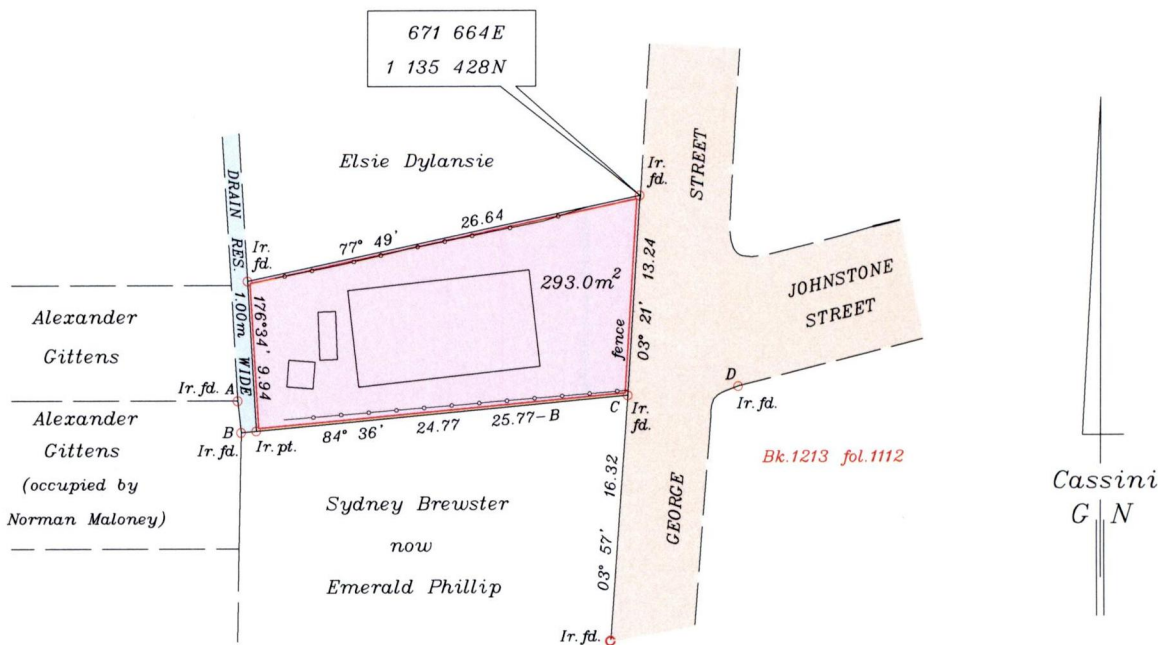


To be brought under the provisions of the Real Property Ordinance

Ward of Naparima
County of Victoria

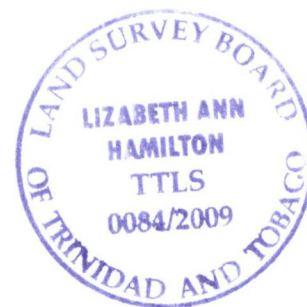
PROCESS 10# 80635

Cadastral Sheet G.3.K., 53F
4/a/1



Chain Link Fence

Line	Bearing	Distance
AB	173° 54'	2.13
CD	85° 26'	7.36



Approved
[Signature]
Director of Surveys 2010.3.15

Co-ordinates are U.T.M. Zone 20 Naparima Datum +/-5m obtained from handheld G.P.S.

SCALE 1:500

Bearings are Cassini Grid based on Solar Observations

Distances are in metres

PLAN of a Parcel of land coloured pink in the Ward of Naparima

Containing two hundred and ninety three square metres

Surveyed by me, with due authority, on August 28, 2009 for Haniffa Ali & Jeneffer Ali

In accordance with Regulation 25(1) of the Land Surveyors Regulations 1998,

I certify that this plan is correct.

Checked by *[Signature]* 26/2/10

[Signature]
Trinidad & Tobago Land Surveyor

Entered

September 25 2009