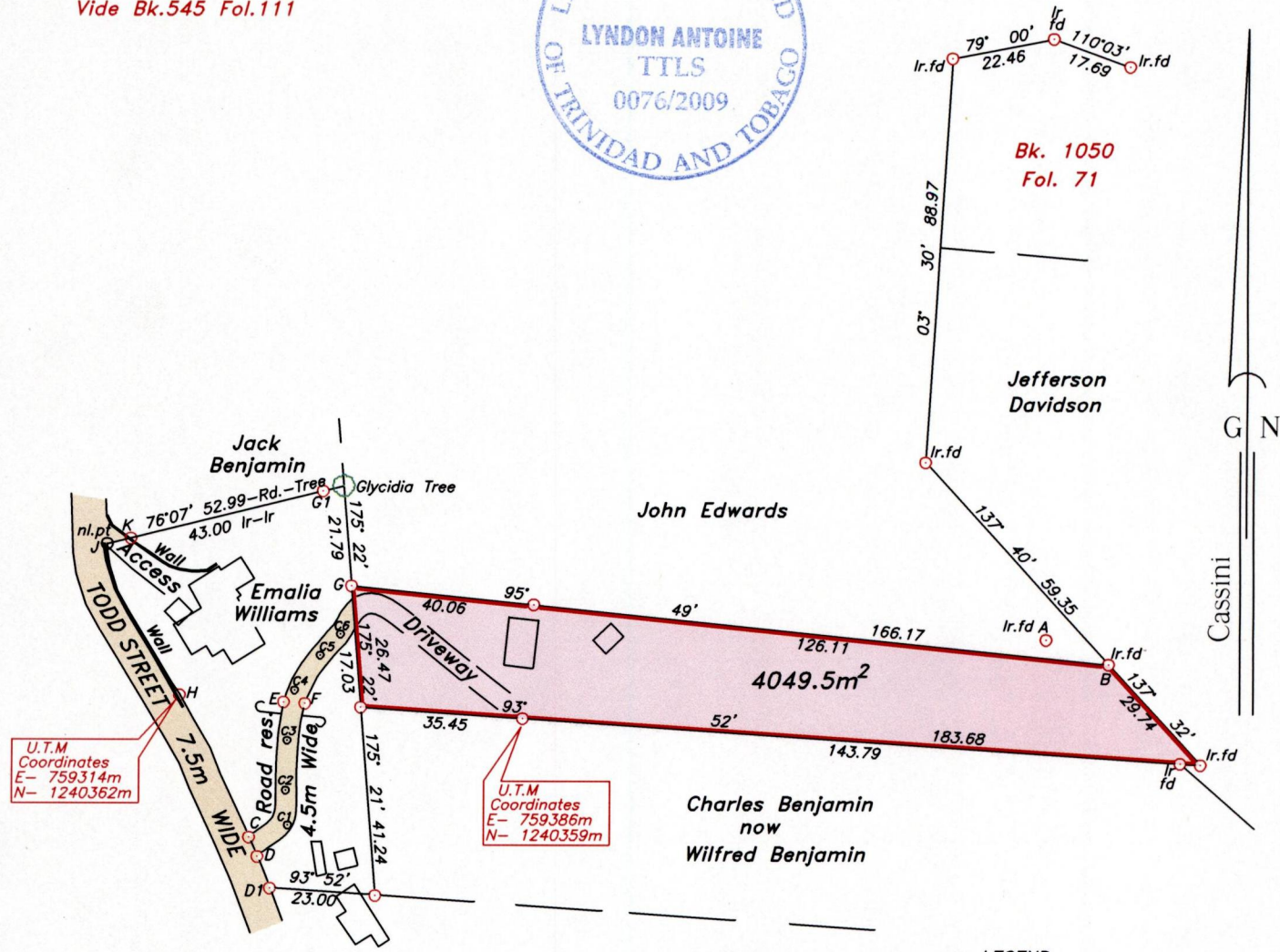
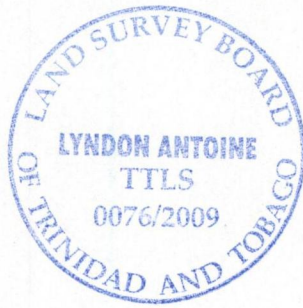


U.P.R.N.....
To be brought under the provisions
of the REAL PROPERTY ORDINANCE

Cadastral Sheet I.19.B
Ward of Tobago
Parish of St. Mary
PEMBROKE

PROCESS 10th 80715

Vide Bk.545 Fol.111



U.T.M
Coordinates
E- 759314m
N- 1240362m

U.T.M
Coordinates
E- 759386m
N- 1240359m

Alleyn Clarke
now
Alvin Smart

LEGEND

LINE	AZIMUTH	DISTANCE
A-B	111° 22'	14.59
C-D	156° 26'	4.60
D-D1	158° 02'	7.39
C-E	14° 06'	30.54
E-F	93° 52'	4.61
F-G	21° 26'	27.46
G-G1	343° 09'	21.53
C-H	333° 59'	34.66
H-J	334° 03'	36.38
H-E	93° 52'	22.70
J-K	76° 07'	5.37
H-K	342° 32'	35.65
D-C1	44° 34'	9.35
C1-C2	356° 19'	7.65
C2-C3	01° 26'	11.03
C3-C4	08° 04'	11.15
C4-C5	36° 10'	9.41
C5-C6	43° 28'	6.35
C6-G	12° 53'	10.79

Note- UTM Zone 20 (WGS 84) Coordinates obtained
from hand held GPS receiver
± 5.00m

Approved

Director of Surveys 2009.12.16

○ Denotes iron put, except otherwise stated.
○ Denotes peg put.

Bearings are grid based on solar observations

Distances are in metres

SCALE 1:1500

PLAN of a parcel of land coloured pink in the Ward of Tobago
Containing four thousand and forty nine point five square metres.
Surveyed by me, with due authority on 17th & 18th January 2007 for Emalia Williams
In accordance with Regulation 25 (1) of the Land Surveyors' Regulations 1998, I certify that this
plan is correct.

Checked by...
Entered

15th October 2009.

Trinidad & Tobago Land Surveyor.....2009.
Path: \\oasi-server\07survey\w133\ewilliams.dwg