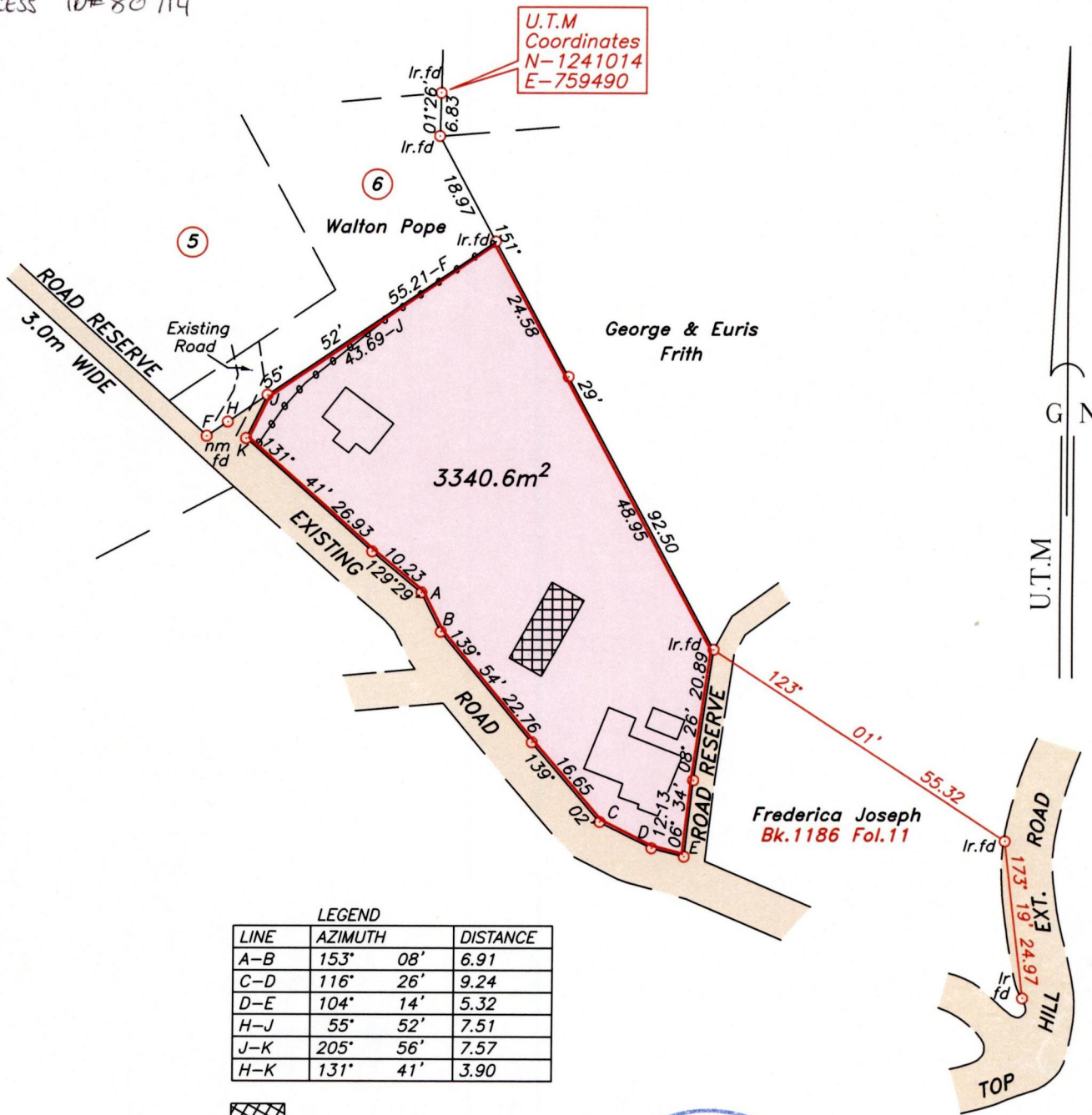


U.P.R.N.....
To be brought under the provisions
of the REAL PROPERTY ORDINANCE

Cadastral Sheet *I.19.B*
Ward of *Tobago*
Parish of *St. Mary*
PEMBROKE

DEED# 13003/1967

PROCESS 10# 80714



LEGEND

LINE	AZIMUTH	DISTANCE
A-B	153° 08'	6.91
C-D	116° 26'	9.24
D-E	104° 14'	5.32
H-J	55° 52'	7.51
J-K	205° 56'	7.57
H-K	131° 41'	3.90

House Under Construction
 wire fence

Note- U.T.M Zone 20 (WGS 84) Coordinates obtained from hand held GPS receiver ± 10m



Approved
 Director of Surveys 2009.12.16

○ Denotes iron put, except otherwise stated.

SCALE 1:1000

Bearings are grid based on solar observations

Distances are in metres

PLAN of a parcel of land coloured *pink* in the Ward of *Tobago*
 Containing *three thousand three hundred and forty point six square metres*.
 Surveyed by me, with due authority on 29th May 2009 for *Margaret Greig*.
 In accordance with Regulation 25 (1) of the Land Surveyors' Regulations 1998, I certify that this plan is correct.

Checked by 30/11/09
 Entered

Land Surveyor

Trinidad & Tobago Land Surveyor.....2009.