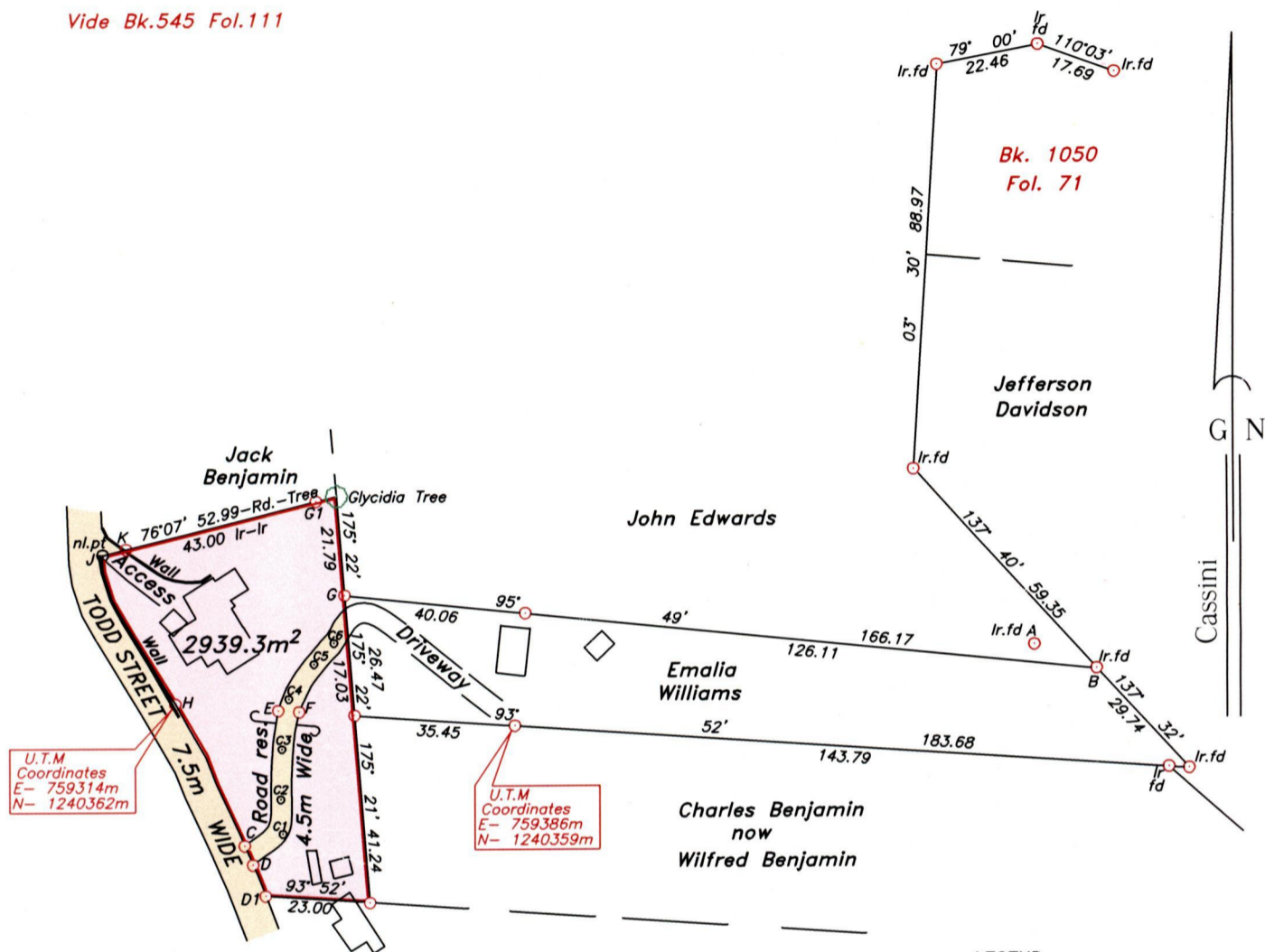


U.P.R.N.....
To be brought under the provisions
of the REAL PROPERTY ORDINANCE

Cadastral Sheet *I.19.B*
Ward of *Tobago*
Parish of *St. Mary*
PEMBROKE

PROCESS 10# 80709

Vide *Bk.545 Fol.111*



Alleyne Clarke
now
Alvin Smart

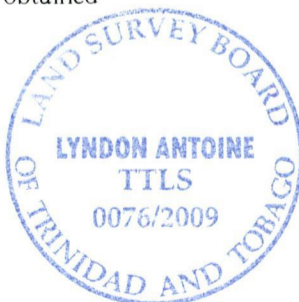
LEGEND

LINE	AZIMUTH	DISTANCE
A-B	111° 22'	14.59
C-D	156° 26'	4.60
D-D1	158° 02'	7.39
C-E	14° 06'	30.54
E-F	93° 52'	4.61
F-G	21° 26'	27.46
G-G1	343° 09'	21.53
C-H	333° 59'	34.66
H-J	334° 03'	36.38
H-E	93° 52'	22.70
J-K	76° 07'	5.37
H-K	342° 32'	35.65
D-C1	44° 34'	9.35
C1-C2	356° 19'	7.65
C2-C3	01° 26'	11.03
C3-C4	08° 04'	11.15
C4-C5	36° 10'	9.41
C5-C6	43° 28'	6.35
C6-G	12° 53'	10.79

Note- UTM Zone 20 (WGS 84) Coordinates obtained
from hand held GPS receiver
± 5.00m

Approved

Lyndon Antoine
Director of Surveys 2009.12.14



○ Denotes iron put, except otherwise stated.
○ Denotes peg put.

Bearings are grid based on solar observations

Distances are in metres

SCALE 1:1500

PLAN of a parcel of land coloured *pink* in the Ward of *Tobago*
Containing *two thousand nine hundred and thirty nine point three square metres.*
Surveyed by me, with due authority on 17th & 18th January 2007 for *Emalia Williams*
In accordance with Regulation 25 (1) of the Land Surveyors' Regulations 1998, I certify that this
plan is correct.

Checked by.....
Entered

Lyndon Antoine
30th September 2009

Trinidad & Tobago Land Surveyor.....2009.

