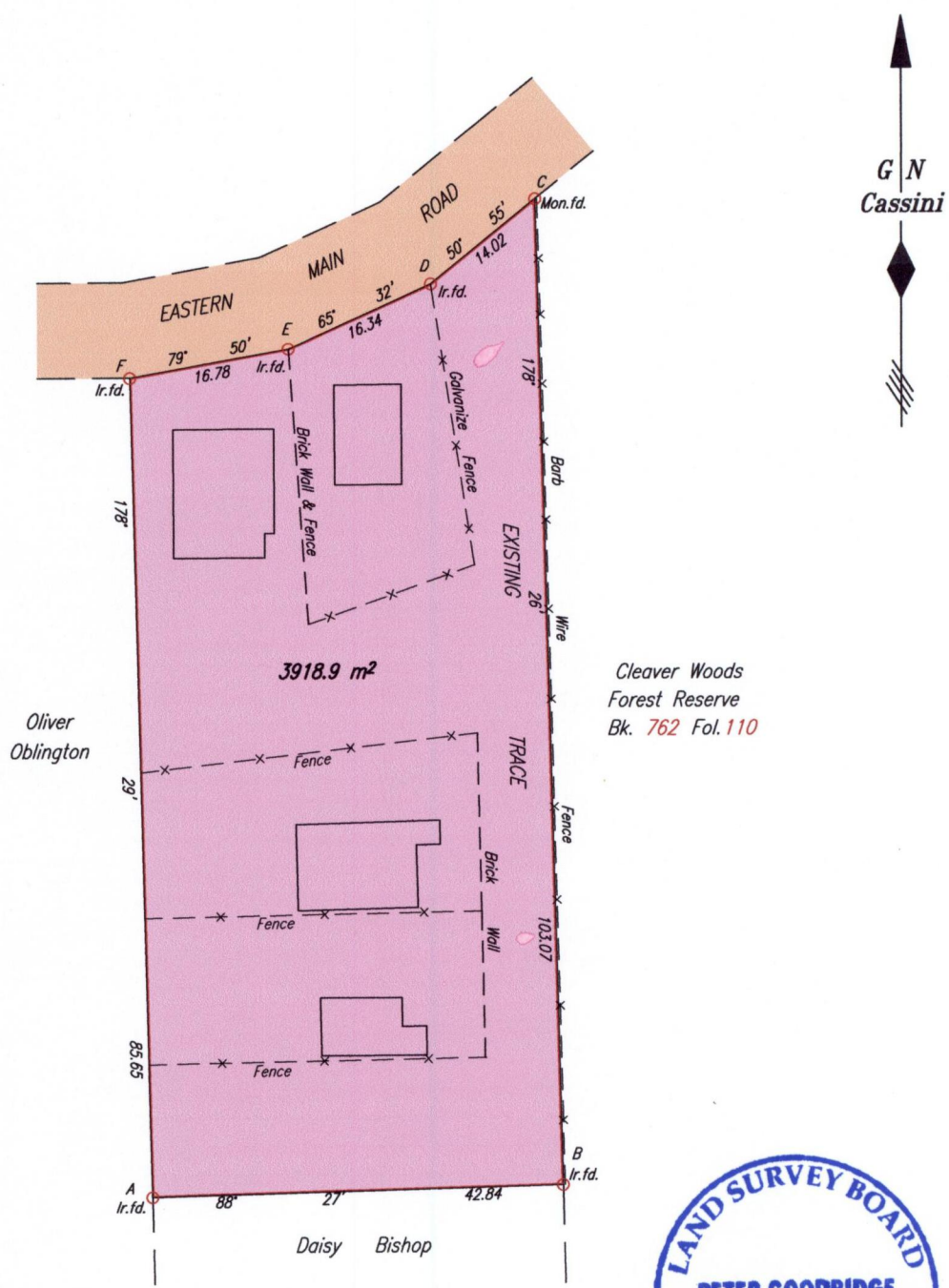


To be brought under the provisions of the Real Property Ordinance

process # 80531

CLEAVER WOODS - D'Abadie



Cleaver Woods
Forest Reserve
Bk. 762 Fol. 110



Coordinates of C (Mon.fd.): 0685877mE, 1175542mN
U.T.M. 20 WGS 84 (+/- 7.00m)
G.P.S. Direct Observation

Approved . *[Signature]*
Director of Surveys 2009.12.11

SCALE 1: 750

Distances are in METRES

- Denotes Iron put except where otherwise stated
- Bearings are Cassini Grid based on Solar Observations

PLAN of a Parcel of land coloured pink in the Borough of Arima
 Containing three thousand nine hundred and eighteen point nine square metres
 Surveyed by me, with due authority, on the 19th of March 2000 for Doyle Hicks
 In accordance with Regulation 25 (1) of The Land Surveyors' Regulations 1998,
 I certify that this plan is correct.

Checked by *[Signature]* 24.10.09

[Signature] TTLS

Entered on

Trinidad & Tobago Land Surveyor
C:\LESS 2008\TRINIDAD\HICKS,VIOLA\0.dwg. 27th July 2009
FILE NO.: H004