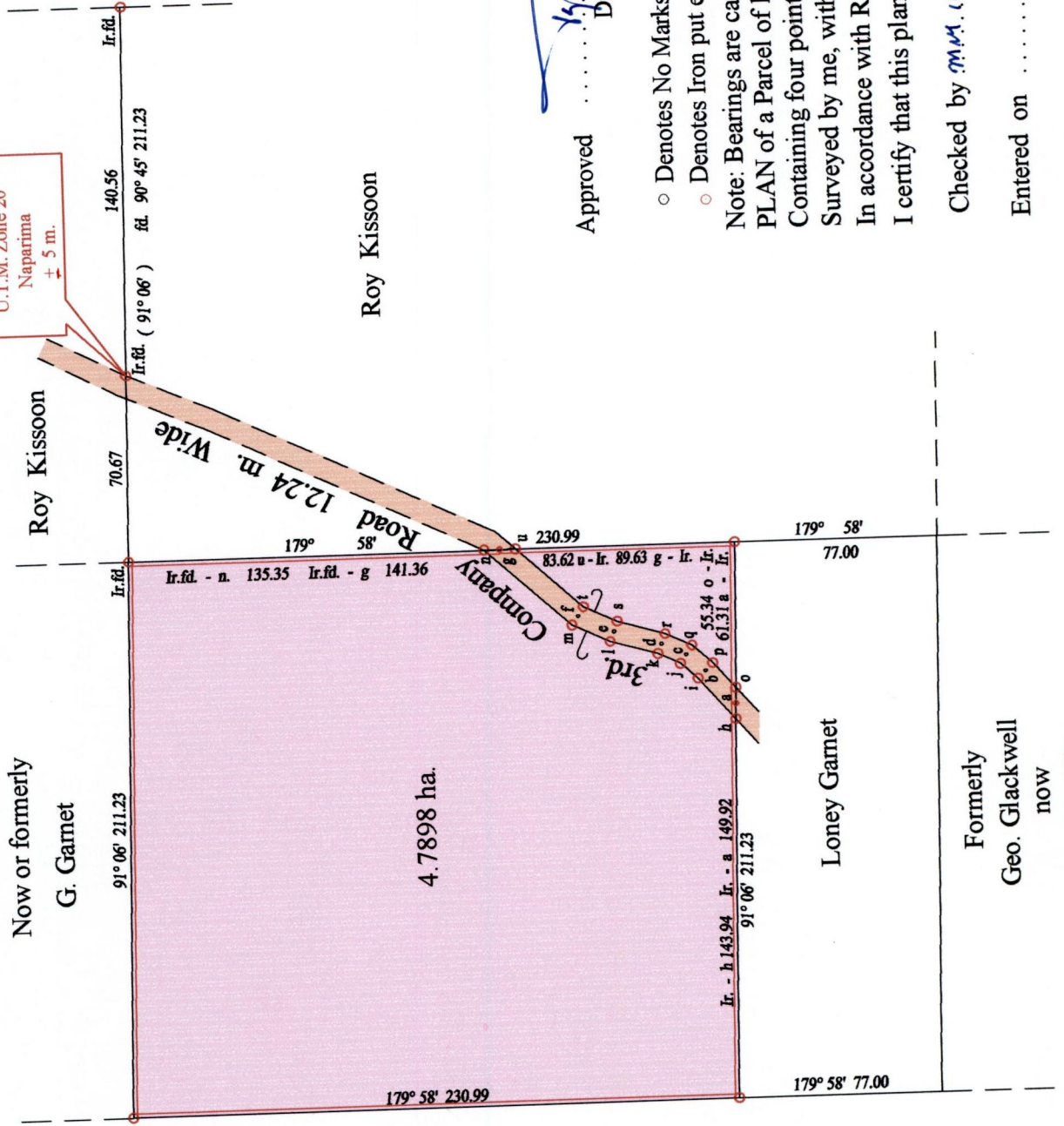


To be brought under the Provisions of the Real Property Ordinance

PROCESS ID # 80497

Ward of Savana Grande
County of Victoria
Cadastral Sheet (G 10 A) 64 B
1/a



a - b	48° 44'	17.00
b - c	41° 37'	9.60
c - d	25° 17'	10.27
d - e	16° 07'	18.84
e - f	24° 49'	14.93
f - g	41° 59'	39.19
g - h	91° 06'	5.97
h - a	91° 06'	5.97
a - o	48° 44'	21.16
o - p	41° 37'	8.77
p - q	25° 17'	11.17
q - r	16° 07'	18.85
r - s	24° 49'	14.01
s - t	41° 37'	8.77
t - u	41° 59'	34.12
u - v	16° 07'	18.82
v - w	24° 49'	15.84
w - x	41° 59'	44.27
x - y	179° 58'	6.01
y - z	179° 58'	6.01
z - a	48° 44'	12.84
a - b	41° 37'	10.43
b - c	25° 17'	11.17
c - d	16° 07'	18.85
d - e	24° 49'	14.01
e - f	41° 37'	8.77
f - g	25° 17'	11.17
g - h	16° 07'	18.85
h - i	24° 49'	14.01
i - j	41° 37'	8.77
j - k	25° 17'	9.37

Formerly Modust
now
Asraph Khan

Approved
Lyra Gung
Director of Surveys
2009.9.17

- o Denotes No Marks
- o Denotes Iron put except stated otherwise.

Note: Bearings are cassini grid based on solar observations
PLAN of a Parcel of land coloured pink in the Ward of Savana Grande
Containing four point seven eight nine eight hectares
Surveyed by me, with due authority, in July 2006 at the request of Garnet Loney
In accordance with Regulation 25 (1) of the Land Surveyors' Regulations 1998,

I certify that this plan is correct.

Checked by *M.M. 019/107*

Entered on Trinidad & Tobago Land Surveyor 21.08.2009

Vide Bk. 1113 fol. 165
Vide Bk. 322 fol. 200

SCALE : 1:2500

Distances are in metres



1436

104