

1434 1434/88

{ } { }

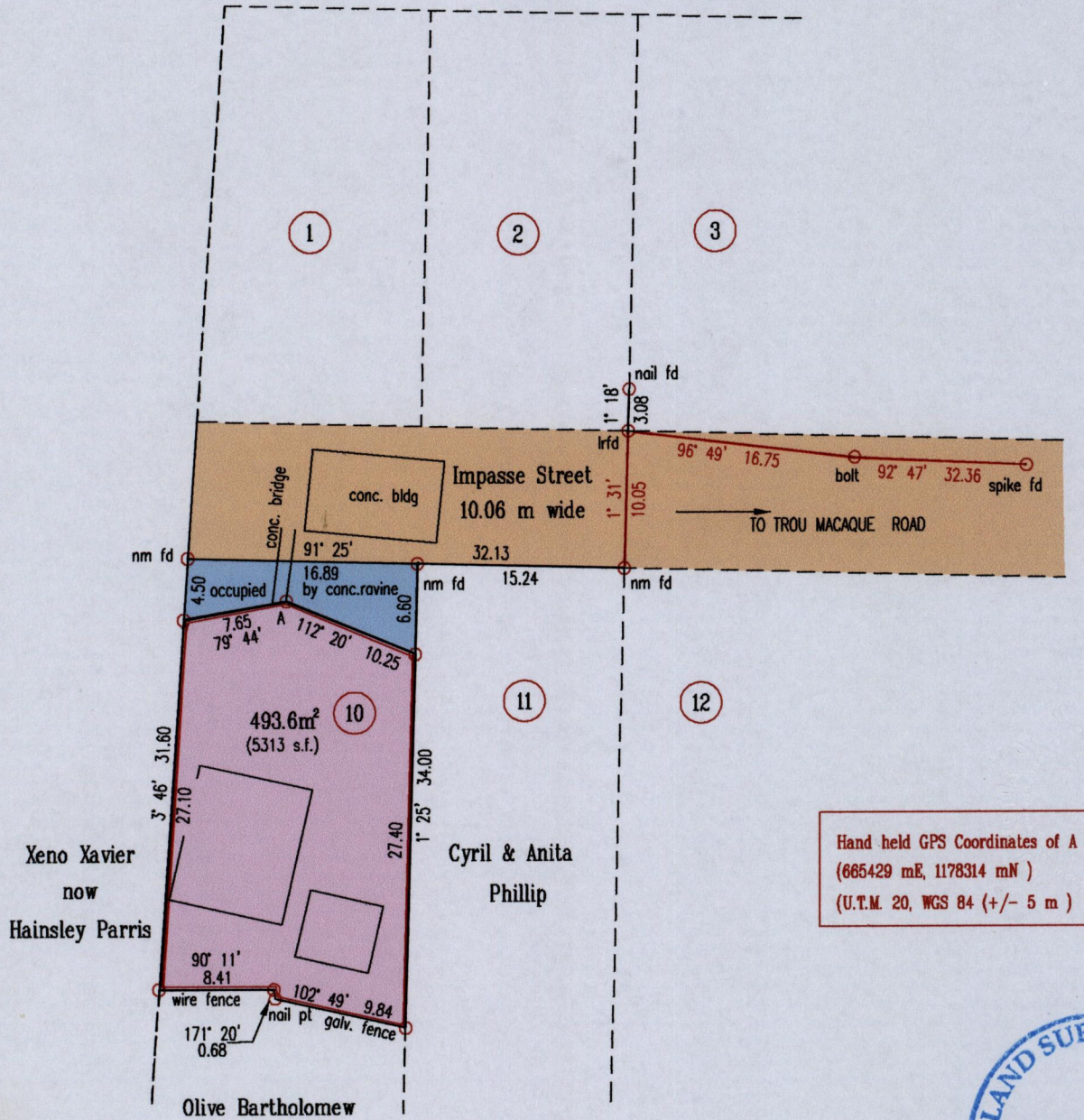
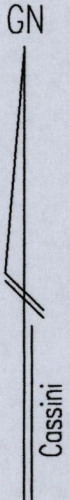
Cadastral Sheet  $\frac{13E}{3/d}$ , A.20.L

Ward of St.Anns

County of St.George

U.P.R.N. No.

TO BE BROUGHT UNDER THE PROVISIONS OF THE REAL PROPERTY ORDINANCE



Hand held GPS Coordinates of A  
(665429 mE, 1178314 mN )  
(U.T.M. 20, WGS 84 (+/- 5 m )



Vide Plan F.E 68  
Bk. 874 fol 163

Approved

*[Signature]*  
2012.12.19 Director of Surveys

Bearings are Cassini Grid based on Solar Obs.

SCALE 1:500

○ Denotes Iron Put unless otherwise stated

Distances are in Metres

Plan of a Parcel of land coloured pink in the Ward of St.Anns

Containing four hundred and ninety three point six square metres

Surveyed by me, with due authority, on June 30th, 2012 for George Cottle and Perlina Cottle

In accordance with Regulation 25(1) of the Land Surveyors' Regulations 1998, I certify that this plan is correct.

Checked by *[Signature]*

*[Signature]*

Entered on .....

Trinidad & Tobago Land Surveyor *3rd* / *July* 2012