

1434

1434 87

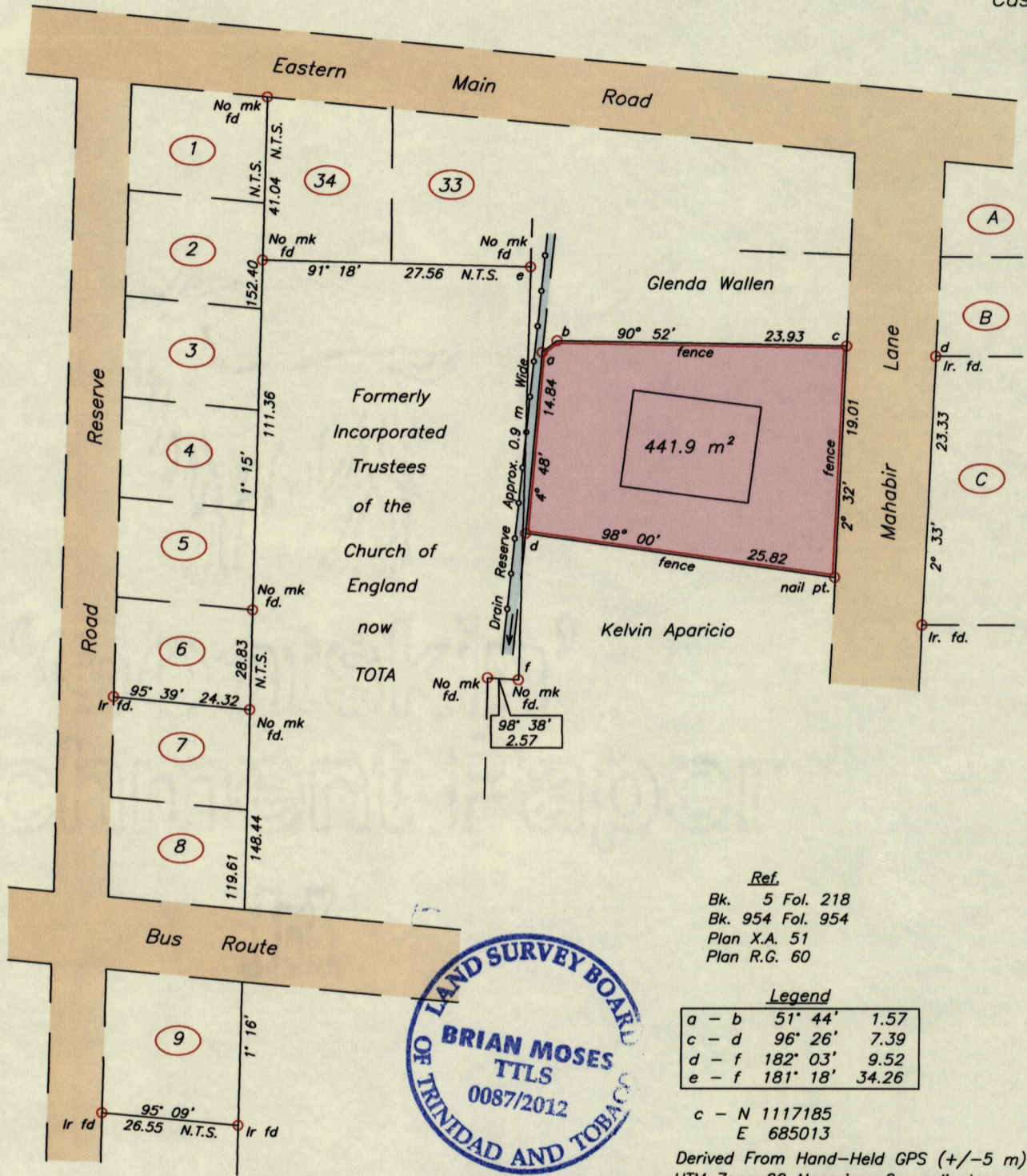
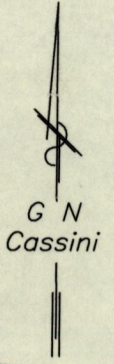
37

U.P.R.N.....

Cadastral Sheet B.24.C. 24B
4/b

To be brought under the provisions
of The Real Property Ordinance

Borough of Arima
County of St. George



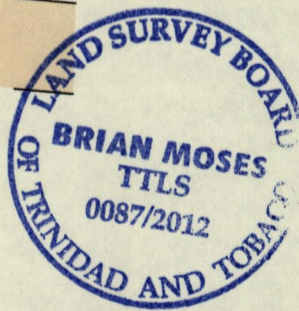
Ref.
Bk. 5 Fol. 218
Bk. 954 Fol. 954
Plan X.A. 51
Plan R.G. 60

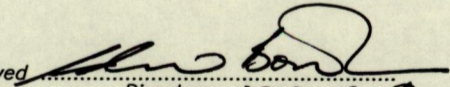
Legend

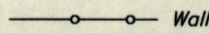
a - b	51° 44'	1.57
c - d	96° 26'	7.39
d - f	182° 03'	9.52
e - f	181° 18'	34.26

c - N 1117185
E 685013

Derived From Hand-Held GPS (+/-5 m)
UTM Zone 20 Naparima Co-ordinates



Approved 
Director 2012.12.10



SCALE 1:500

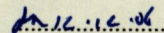
Distances are in METRES

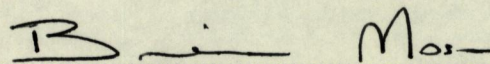
○ Denotes Iron put unless otherwise stated
Bearings are Cassini Grid based on Solar observations

PLAN of a Parcel of land coloured pink in the Borough of Arima
Containing four four one point nine square metres

Surveyed by me, with due authority, on 28th January 2006 & 14th August, 2012 for Bianca Hypolite
In accordance with Regulation 25 (1) of the Land Surveyors' Regulations 1998,

I certify that this Plan is correct.

Checked by 
Entered on


Trinidad & Tobago Land Surveyor (T.T.L.S.)
27th Aug 2012