

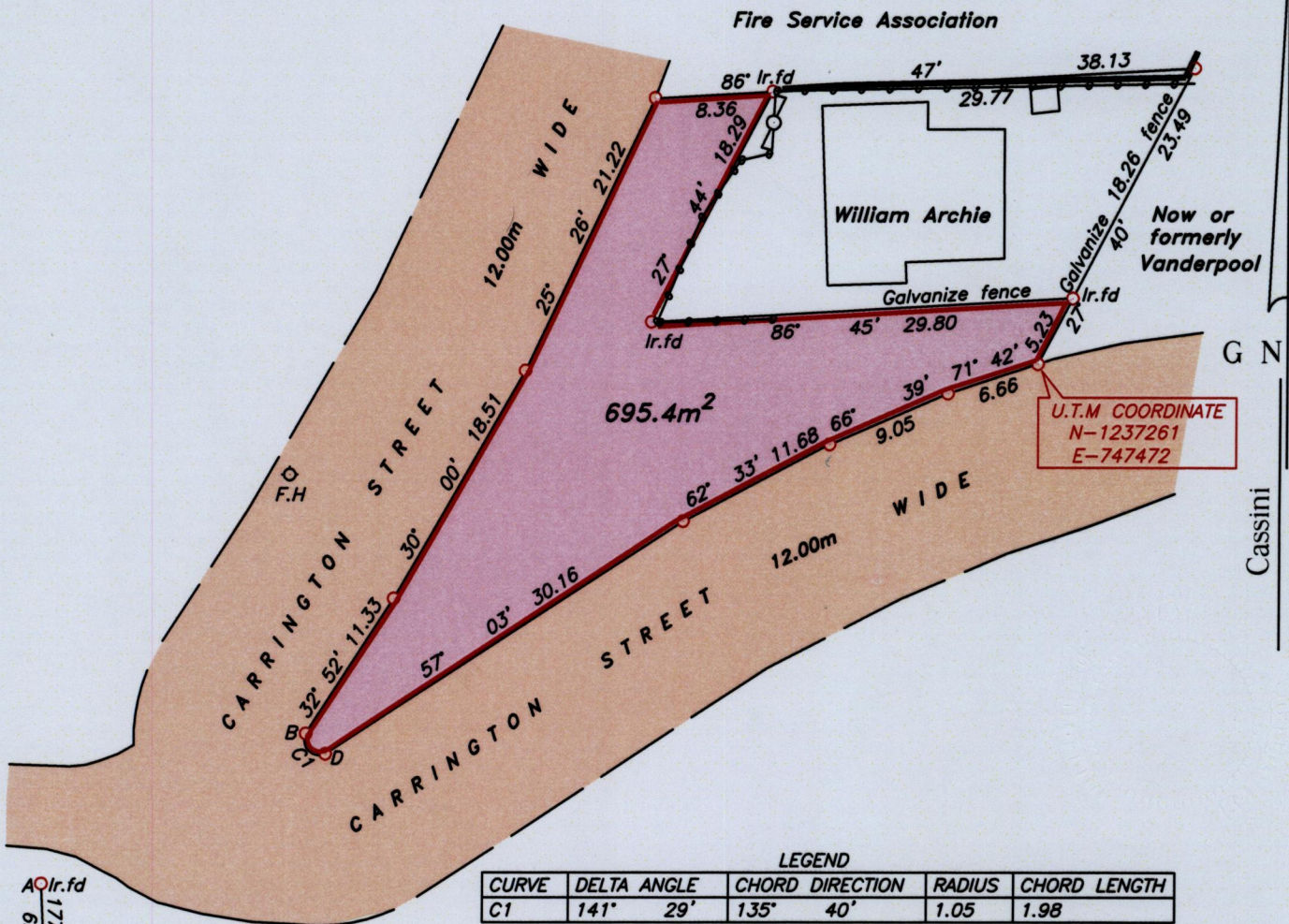
1434

1434/18

336

U.P.R.N.....
To be brought under the provisions
of the REAL PROPERTY ORDINANCE

Cadastral Sheet I.17.K ^{2G}/_{2/d/2}
Ward of Tobago
Parish of St. Andrew
SCARBOROUGH

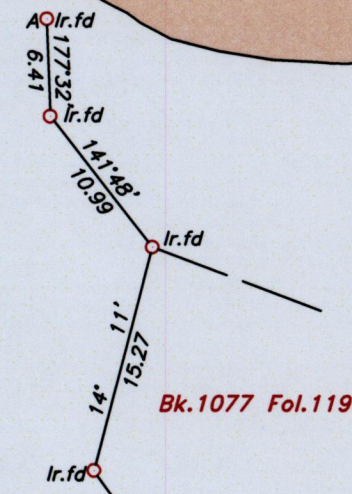
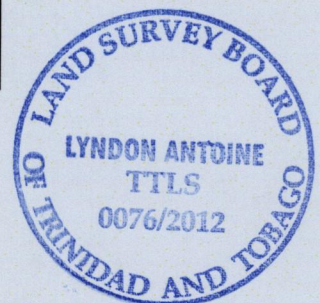
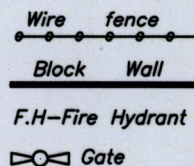


LEGEND

CURVE	DELTA ANGLE	CHORD DIRECTION	RADIUS	CHORD LENGTH
C1	141° 29'	135° 40'	1.05	1.98

LEGEND

LINE	AZIMUTH	DISTANCE
A-B	60° 24'	21.39
B-F.H	356° 04'	18.29
B-D	135° 40'	1.98



Approved
[Signature]
Director of Surveys 2012-12-10

Note- U.T.M Zone 20 (WGS 84) Coordinates obtained from Leica 1200 GPS system
Accuracy ± 0.01m

SCALE 1:500

Bearings are grid based on solar observations

Distances are in metres

PLAN of a parcel of land coloured pink in the Ward of Tobago
Containing six hundred and ninety five point four square metres.
Surveyed by me, with due authority on 13th March 2012 for William Archie, Moulda Archie & Ivor Archie

In accordance with Regulation 25 (1) of the Land Surveyors' Regulations 1998, I certify that this plan is correct.

Checked by *[Signature]*
Entered

Lyndon Antoine
18th September

Trinidad & Tobago Land Surveyor.....2012.

path: \\dasl-server\2012survey\ce17\iarchie.dwg