

1434

1434/84

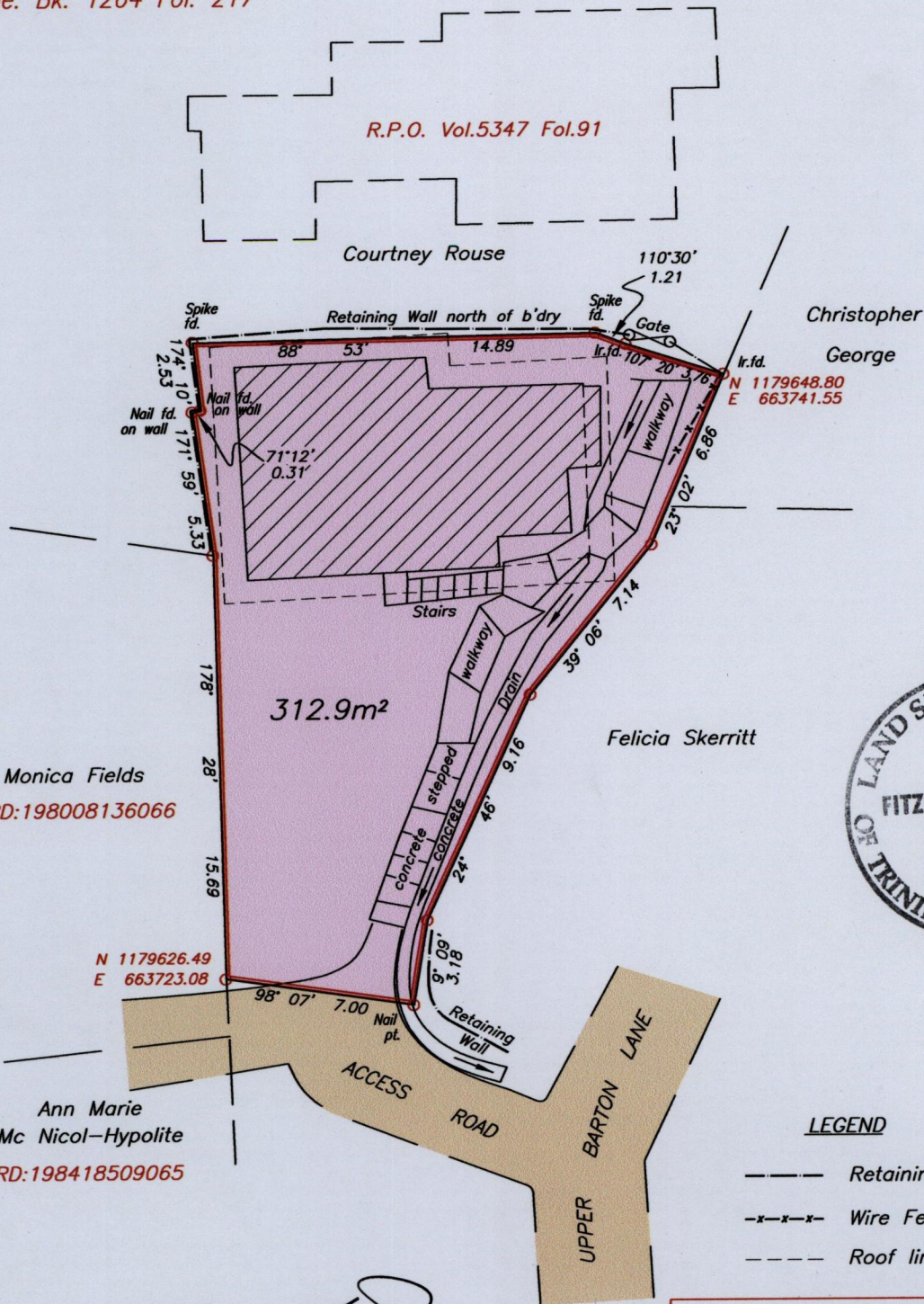
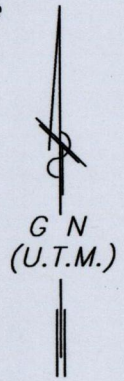
34

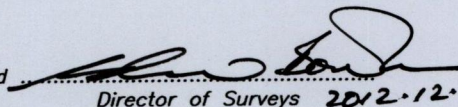
U.P.R.N.....

Cadastral Sheet A.20.G 3/b
City of Port of Spain
County of St. George
BELMONT

To be brought under the provisions
of The Real Property Ordinance

Vide: Bk. 1264 Fol. 217



Approved 
Director of Surveys 2012.12.3

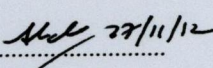
Coordinates are based on the computed tie from
lr.pt. at S.W. corner to L&S Trav. Stat. #13-047
204° 49' 314.01m

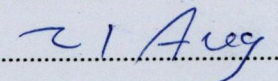
SCALE 1:250

Distances are in METRES

o Denotes Iron put unless otherwise stated
Bearings are U.T.M. Grid based on Solar observations

PLAN of a Parcel of land coloured pink in the City of Port of Spain
Containing three hundred and twelve point nine square metres.
Surveyed by me, with due authority, on 31st July, 2012 for Mr. Trevor London.
In accordance with Regulation 25 (1) of the Land Surveyors' Regulations 1998,
I certify that this Plan is correct.

Checked by  T.T.L.S.

Entered on Trinidad & Tobago Land Surveyor  20.12