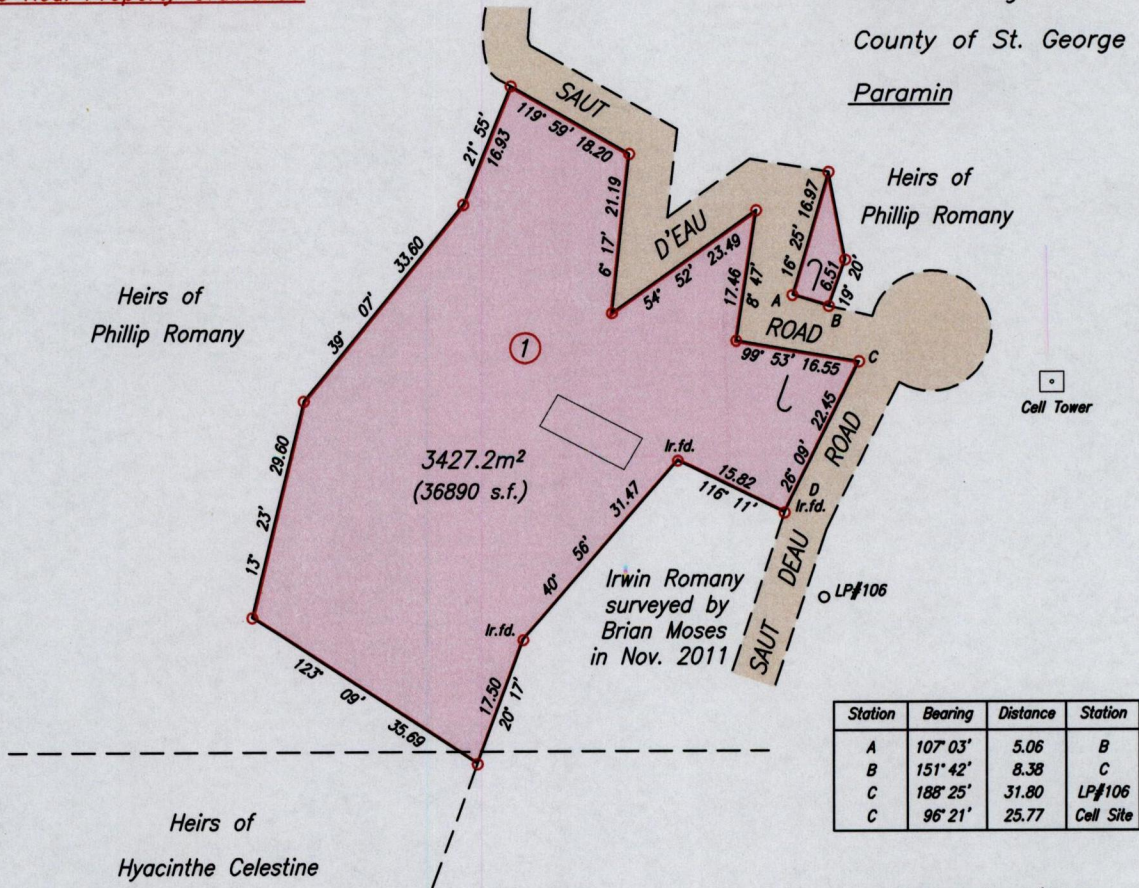
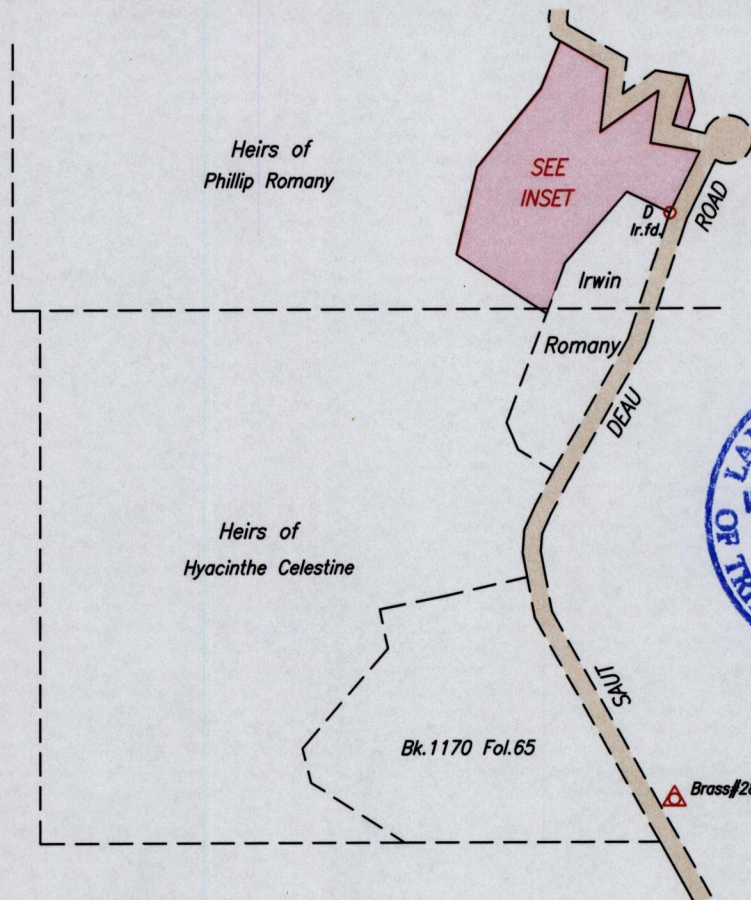


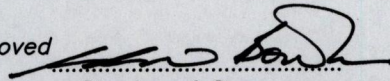
To be brought under the provisions of the Real Property Ordinance.

Cadastral Sheet A.15.B. 13A
 2/d
 Ward of Diego Martin
 County of St. George
 Paramin



INSET Scale 1/1000



Approved 
 Director of Surveys
 2012.11.9

D Ir.f.d. N 1187981 Hand Held GPS +/- 5m
 E 662506 UTM proj. WGS84 Zone 20

Station	Bearing	Distance	Station
D	179° 35'	193.88	Brass#28

SCALE 1/2500

Distances are in metres

○ Denotes Iron put unless otherwise stated

Bearings are Cassini Grid based on Solar Observations

PLAN of a Parcel of land coloured pink in the Ward of Diego Martin

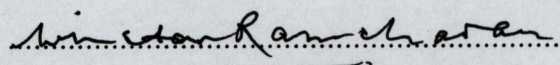
Containing three thousand four hundred and twenty seven point two square metres

Surveyed by me, with due authority, on February 12th 2012 for Catherine Letren

In accordance with Regulation 25 (1) of the Land Surveyors' Regulations 1998,

I certify that this plan is correct.

Checked by mm 6/11/2012



Entered on

Trinidad & Tobago Land Surveyor 18th October 2012