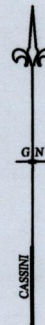
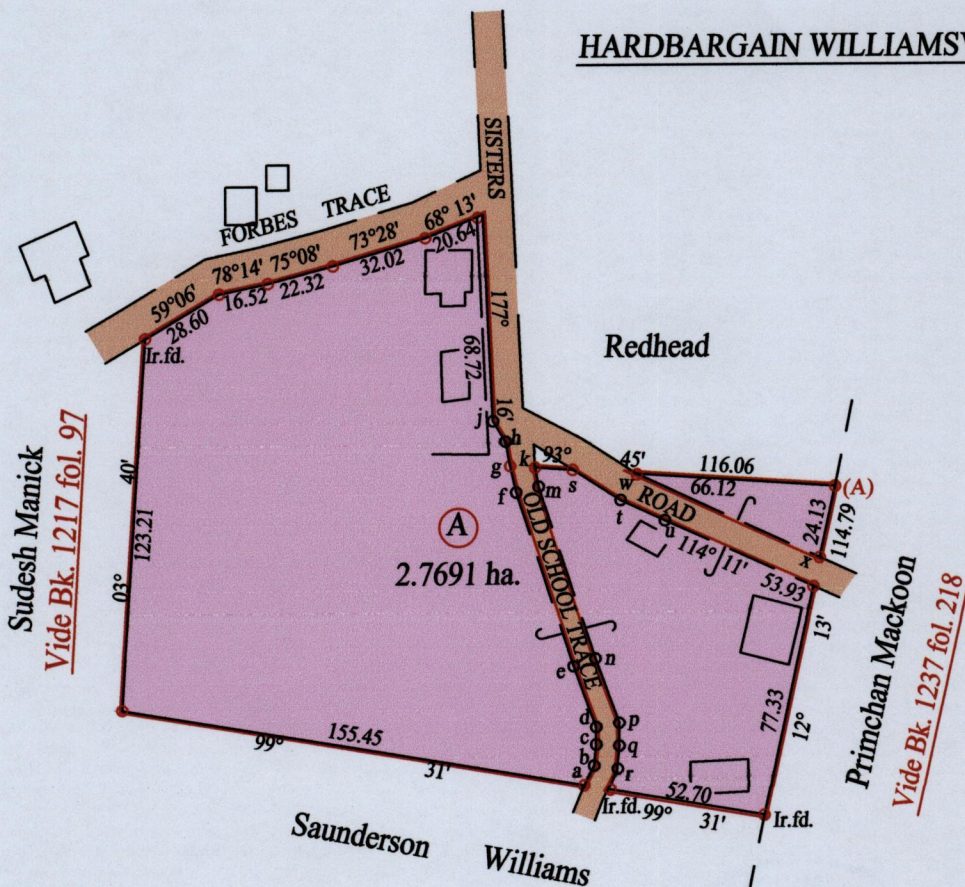


To be brought under the Provisions of the Real Property Ordinance

Ward of Savana Grande
County of Victoria
Cadastral Sheet D.23.O 54 A
2/d



HARDBARGAIN WILLIAMSVILLE

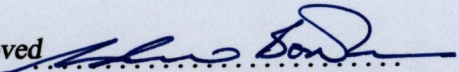


At Station (A)
E 0670990
N 1141304
Reading taken with
Handheld G.P.S.
U.T.M. Zone 20
Naparima
± 5 m.



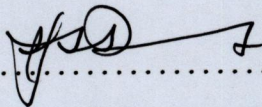
Line	Bearing	Distance
a - b	26° 39'	7.17
b - c	6° 16'	6.99
c - d	0° 00'	5.75
d - e	339° 50'	21.50
e - f	341° 54'	60.79
f - g	347° 10'	8.96
g - h	348° 54'	8.18
h - j	328° 31'	7.85
g - k	93° 45'	8.31
k - m	169° 34'	6.40
m - n	161° 54'	60.13
n - p	159° 50'	22.73
p - q	180° 00'	7.54
q - r	186° 16'	8.79
r - Ir.f.d.	206° 39'	6.18
s - t	122° 26'	18.11
s - w	93° 45'	21.15
t - u	114° 37'	16.19
w - x	114° 41'	51.83

Line	Bearing	Distance
k - s	93° 45'	12.54

Approved 
Director of Surveys 2012-10-31

○ Denotes Iron put except stated otherwise.

Note: Bearings are cassini grid based on solar observations Distances are in metres
PLAN of a Parcel of land coloured pink in the Ward of Savana Grande
Containing two point seven six nine one hectares
Surveyed by me, with due authority, on the 11th January 2012 for Vilma Samuel
In accordance with Regulation 25 (1) of the Land Surveyors' Regulations 1998,
I certify that this plan is correct.

Checked by 

Entered on Trinidad & Tobago Land Surveyor 03.04.2012

SCALE : 1:2500