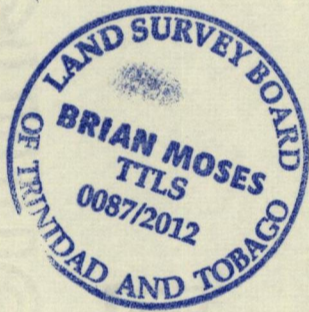
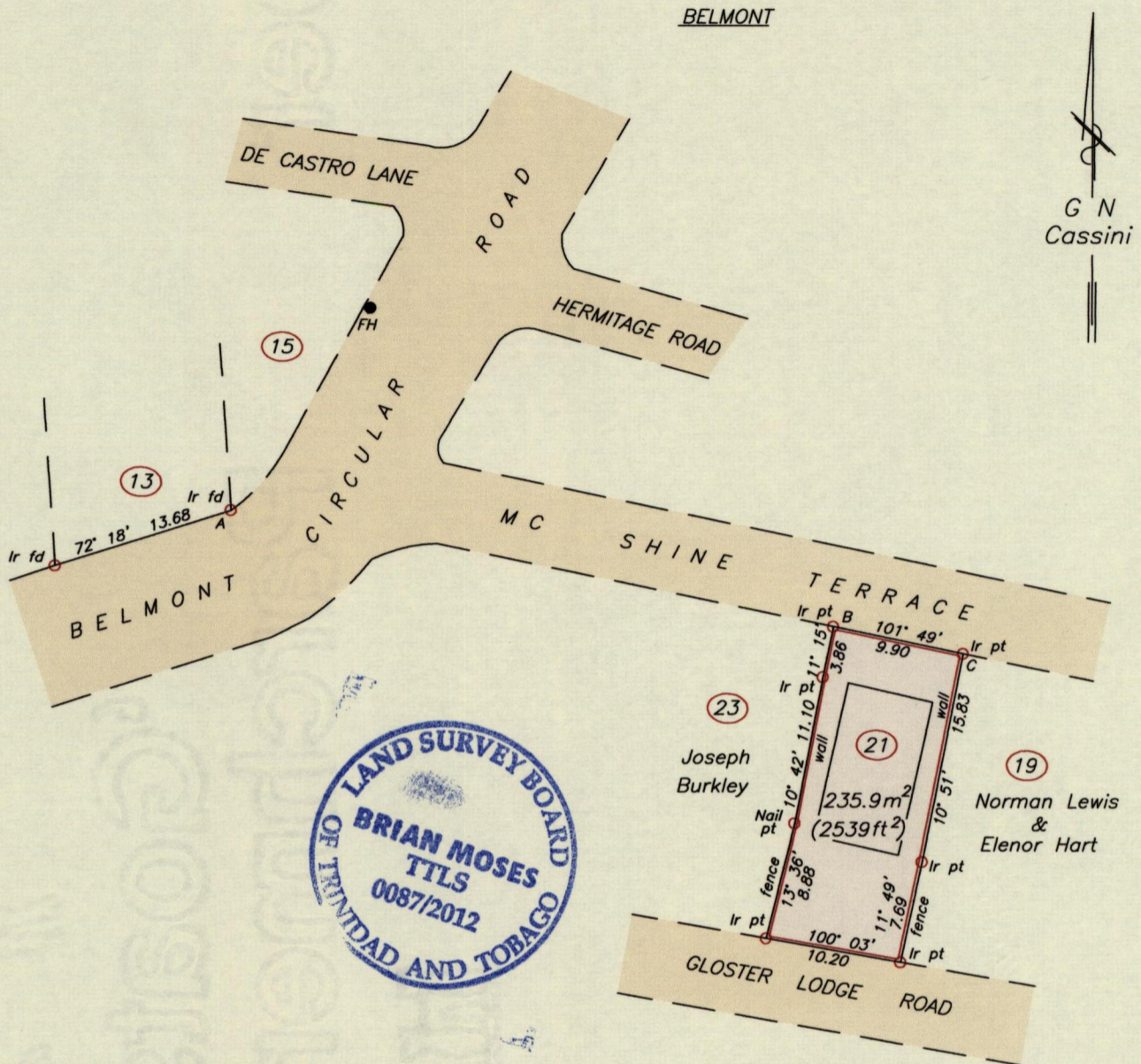


U.P.R.N.....

Cadastral Sheet B.17.M. $\frac{13E}{3/C}$
City of Port of Spain
County of St. George

To be brought under the provisions
of The Real Property Ordinance

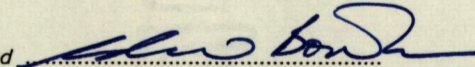


C - N 1178685
E 663342

Derived From Hand-Held GPS (+/-5 m)
UTM Zone 20 Naparima Co-ordinates

A - B 100' 55' 45.89
A - FH 34' 03' 18.38

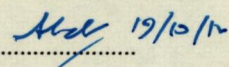
● FH - Fire Hydrant

Approved 
Director of Surveys 2012.10.19

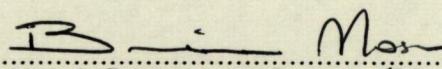
SCALE 1:500
Distances are in METRES

Bearings are Cassini Grid based on Solar observations

PLAN of a Parcel of land coloured pink in the City of Port of Spain
Containing two three five point nine square metres
Surveyed by me, with due authority, on 12th July, 2012 for Ronald Gittens
In accordance with Regulation 25 (1) of the Land Surveyors' Regulations 1998,
I certify that this Plan is correct.

Checked by  19/10/12

Entered on


Trinidad & Tobago Land Surveyor (T.T.L.S.)
2nd October 2012