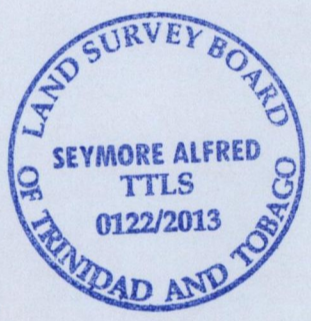
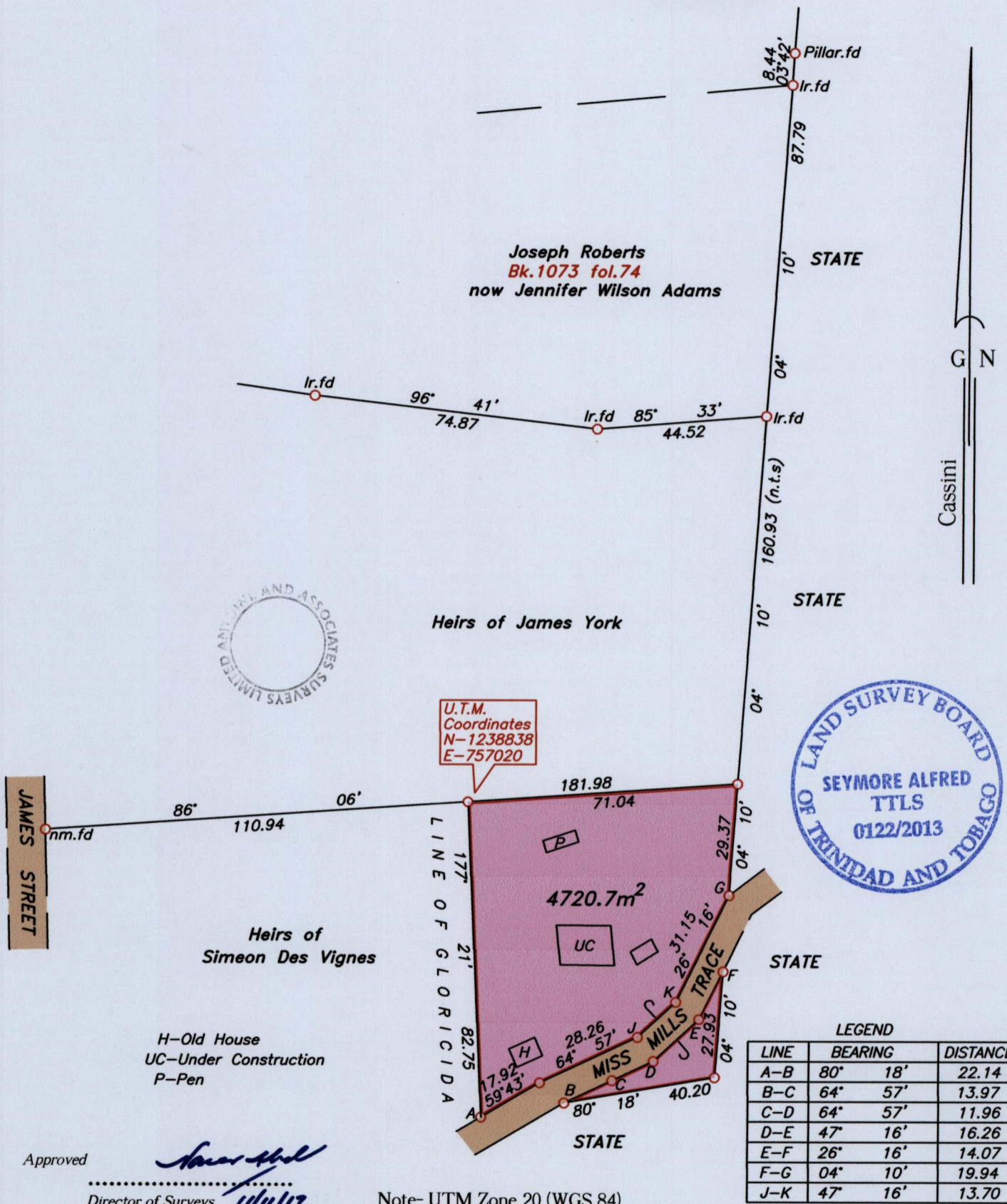


U.P.R.N.....
To be brought under the provisions
of the REAL PROPERTY ORDINANCE

Cadastral Sheet I.19.E
Ward of Tobago
Parish of St. Mary
GOODWOOD



Approved
[Signature]
Director of Surveys 14/01/13

Note- UTM Zone 20 (WGS 84)
Coordinates obtained
from hand held GPS receiver
± 6.00m

SCALE 1:1500

○ Denotes iron put, except otherwise stated.
Bearings are grid based on solar observations

Distances are in metres

PLAN of a parcel of land coloured *pink* in the Ward of *Tobago*
Containing *four thousand seven hundred and twenty point seven square metres.*
Surveyed by me, with due authority on 19th December 2012, 8th January & 10th April 2013 for
Elma Thomas
Certified Correct in accordance with Regulation 25 (1) of the Land Surveyors' Regulations 1998.

Checked by.....
Entered
Trinidad & Tobago Land Surveyor.....*[Signature]*.....2013.
Path: \\aasl-server\2012survey\b258\d benjamin.dwg