

To be brought under the provisions of the Real Property Ordinance

Ward of Savana Grande

County of Victoria

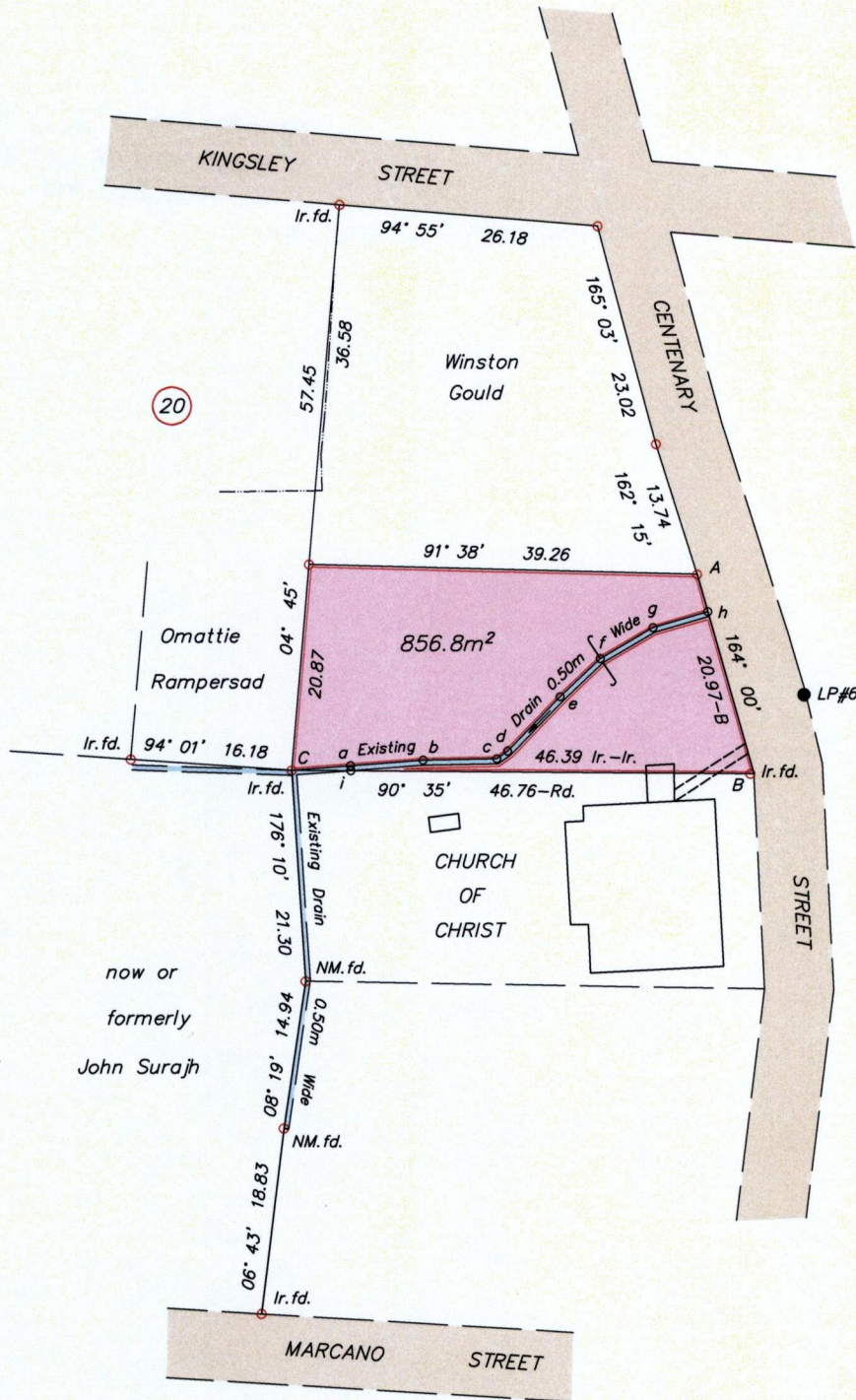
Cadastral Sheet G.4.N., $\frac{54D}{4/a/3}$

VIDE PLAN K.J.4

Bk.1213 fol.8

Bk.1172 fol.80

Bk.1079 fol.224



Line	Bearing	Distance
Ca	85° 46'	5.93
Ci	90° 35'	5.95
ai	175° 46'	0.50
ab	85° 46'	7.32
bc	89° 04'	7.46
cd	55° 17'	1.34
de	44° 05'	7.63
ef	46° 31'	5.60
fg	59° 47'	6.17
gh	73° 55'	5.79
Ah	164° 00'	3.92
hB	164° 00'	17.05
A-LP	138° 22'	16.32



Approved

Director of Surveys

A : 677461mE, 1135275mN

Co-ordinates are U.T.M. Zone 20 Naparima Datum +/-5m obtained from handheld G.P.S.

Bearings are U.T.M. Grid based on Solar Observations

Distances are in metres

PLAN of a Parcel of land coloured pink in the Ward of Savana Grande

Containing eight hundred and fifty six point eight square metres

Surveyed by me, with due authority, on June 19 2013 for Patricia Wankin

Certified Correct in accordance with Regulation 25(1) of the Land Surveyors Regulations 1998

Checked by

Entered

Trinidad & Tobago Land Surveyor July 01 2013

Elizabeth Ann Hamilton

July 01

----- fence

SCALE 1:750

o denotes Traverse marks along drain edge

o denotes Ir.pt. unless otherwise stated

101

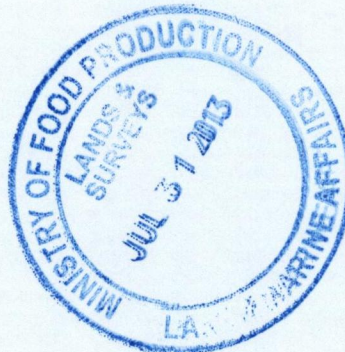
"A"

This is the Survey Plan marked "A" referred to in the annexed affidavit of **Lizbeth-Ann Hamilton**.

Sworn to, before me, this 18th day of July 2013.


.....
Commissioner of Affidavits

BERTRAND C. ALLEYNE
COMMISSIONER OF AFFIDAVITS
PRINCES TOWN



1434/191