

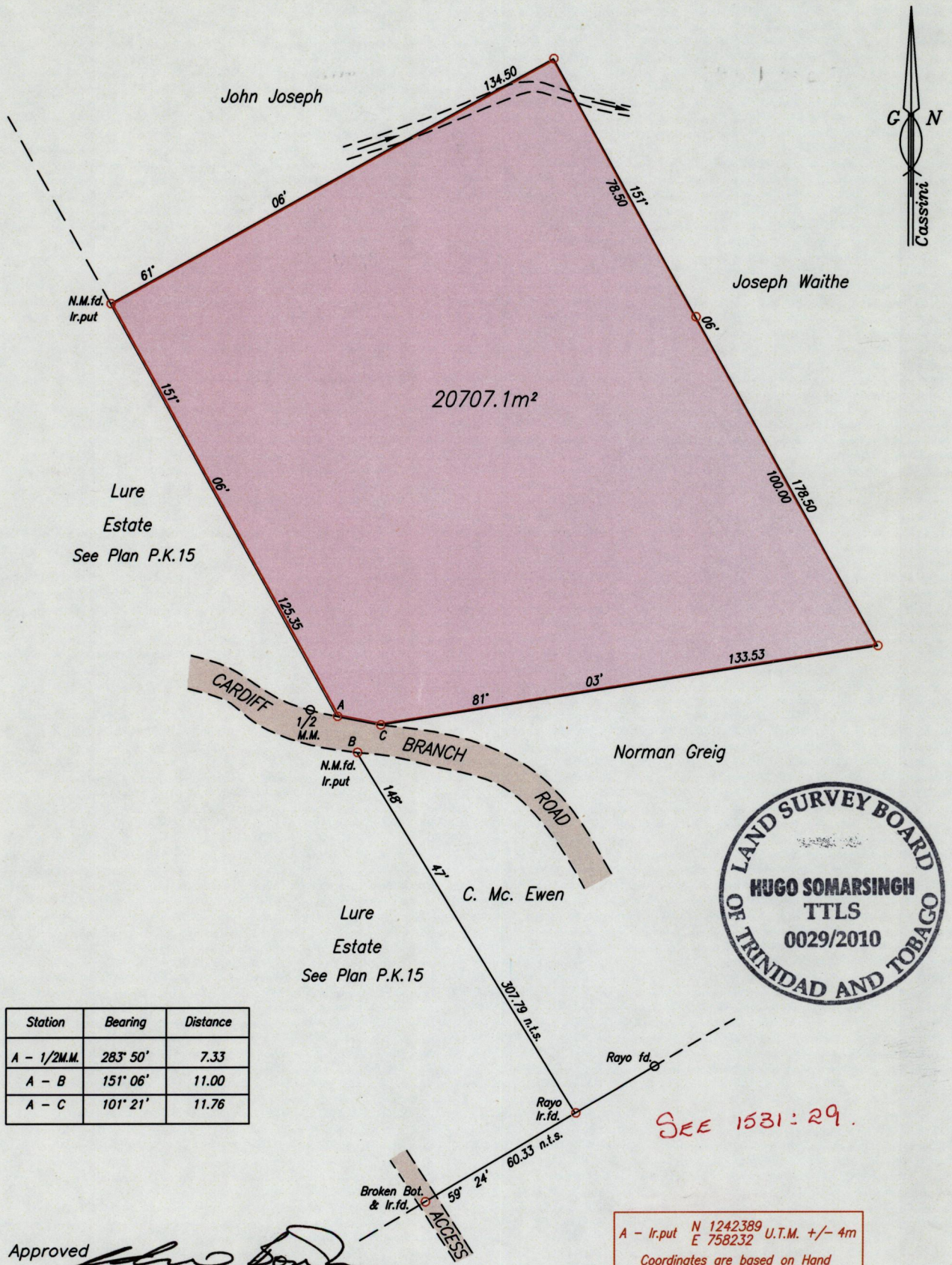
To be brought under the provisions of the Real Property Ordinance.

Cadastral Sheet I.14.M.

PROCESS ID # 38717

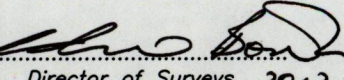
Ward of Tobago

Parish of St. Mary



SEE 1531:29.

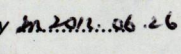
A - Ir.put N 1242389 U.T.M. +/- 4m
 E 758232
 Coordinates are based on Hand held GPS W.G.S.84 Zone 20

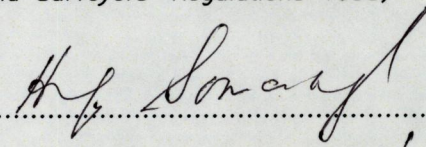
Approved 
 Director of Surveys 2012-6-27

- Denotes Iron put unless otherwise stated
- Bearings are Cassini Grid based on Solar Observations

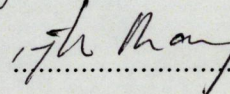
SCALE 1/1500
 Distances are in metres

PLAN of a Parcel of land coloured pink in the Ward of Tobago
 Containing twenty thousand seven hundred and seven point one square metres
 Surveyed by me, with due authority, on 17th April, 2010 for Earl Belfast & Nicole Belfast
 In accordance with Regulation 25 (1) of the Land Surveyors' Regulations 1998,
 I certify that this plan is correct.

Checked by 



Entered on C.M.S. 07-02-2013

Trinidad & Tobago Land Surveyor  2010