

1434

1434 / 188

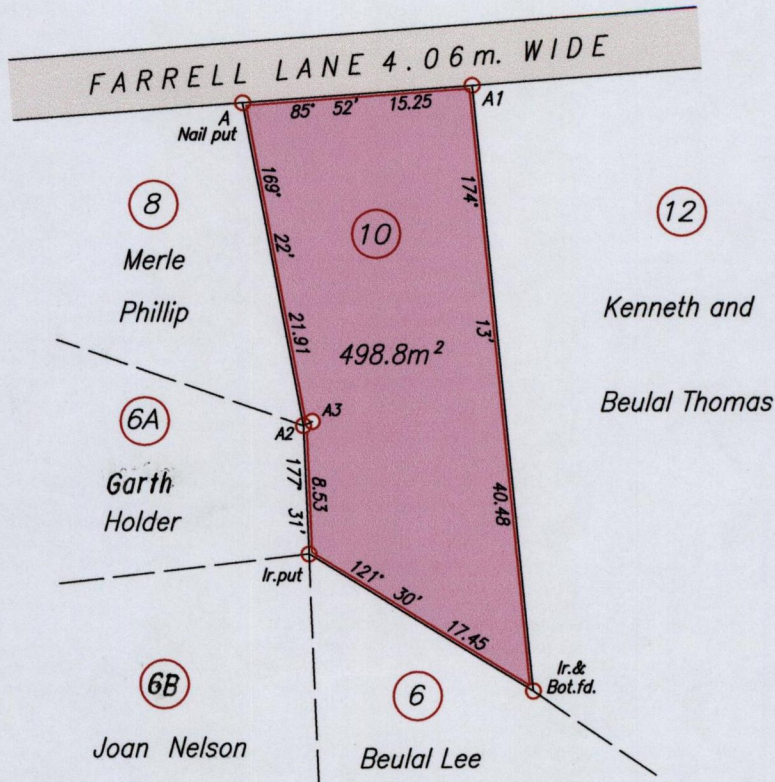
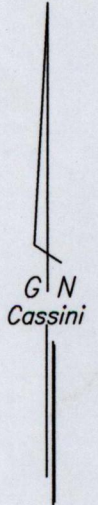
1{3}

To be brought under the Provisions of the
Real Property Ordinance

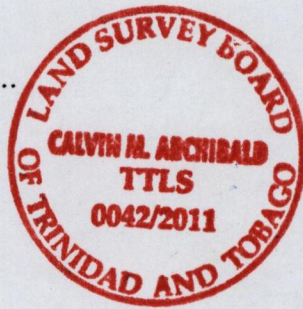
City of Port-of-Spain
County of St. George
Cadastral Sheet A.20.G.

$\frac{13E}{3/a}$

"Belmont"



Approved..... *[Signature]*
 Director of Surveys
 30/7/13



At A		At A1		U.T.M.
N	1179724	N	1179727	
E	0663629	E	0663641	

obtained from Hand-held
GPS receiver
(+ / - 3m.)

A2-A3 64° 56' 0.64

SCALE 1 / 500
Distances are in metres

○ Denotes Iron found unless otherwise stated
Bearings are Cassini Grid based on Solar Observations

Plan of a Parcel of land coloured pink in the City of Port-of-Spain
Containing four hundred and ninety-eight point eight square metres
Surveyed by me, with due authority, on 20th July 2011 for Iona Holder.
In accordance with Regulation 25 (1) of the Land Surveyors' Regulations 1998,
I certify that this plan is correct.

Checked by *[Signature]* T.T.L.S.
 Entered on *3rd August* 2011