

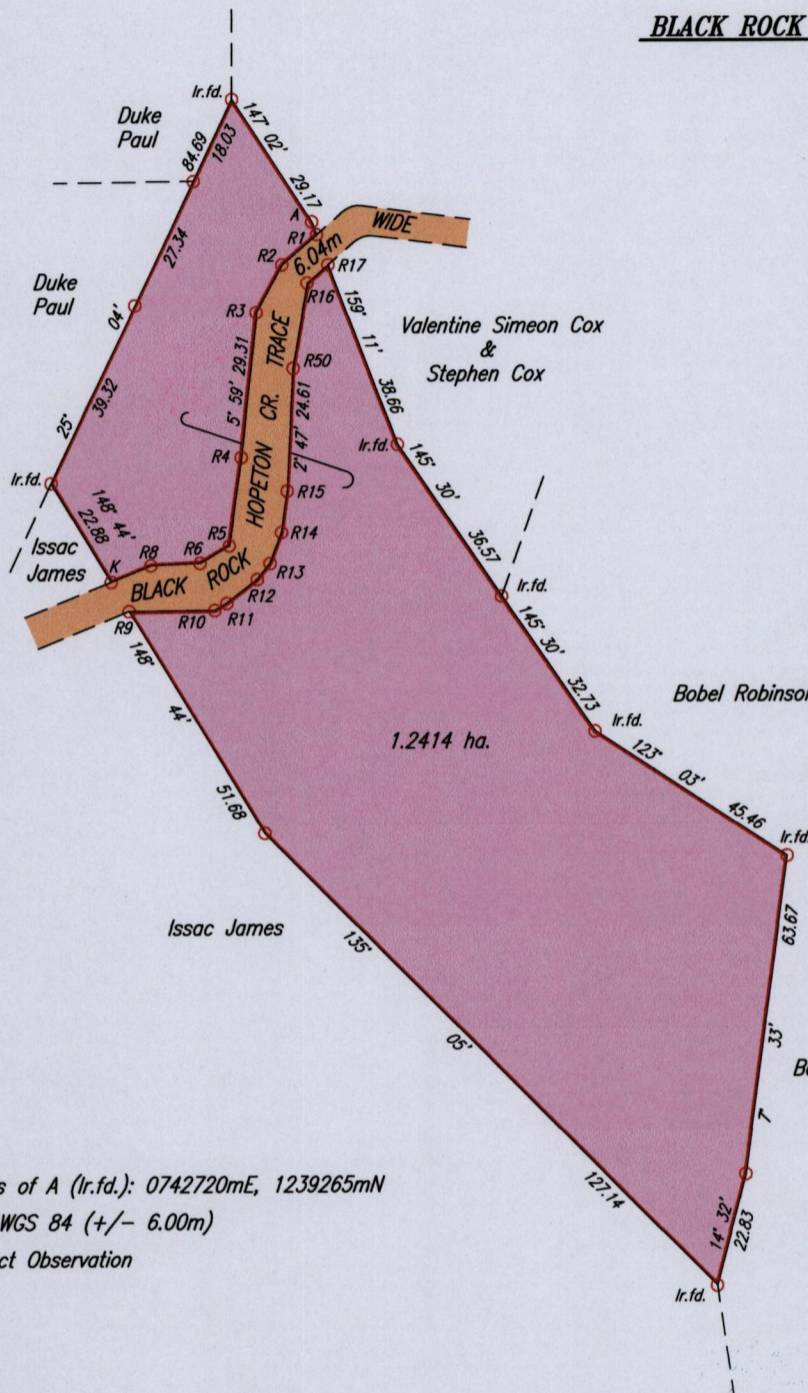
1434

1434/183

1833

Cadastral Sheet I.16.1. 1C
Ward of Tobago 3/d/1
Parish of St. David

To be brought under the provisions of the Real Property Ordinance



LEGEND

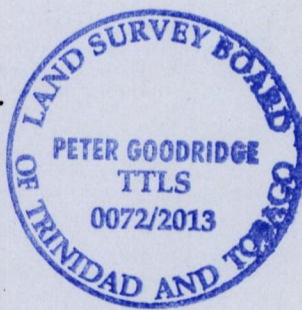
K - R8	67° 41'	8.47
R8 - R6	87° 23'	9.78
R6 - R5	59° 31'	6.74
R5 - R4	7° 48'	17.67
R3 - R2	28° 10'	10.77
R2 - R1	48° 53'	9.16
R9 - R10	89° 24'	16.89
R10 - R11	59° 43'	2.77
R11 - R12	52° 11'	7.63
R12 - R13	38° 41'	4.07
R13 - R14	20° 28'	6.53
R14 - R15	8° 05'	8.30
R50 - R16	9° 44'	17.32
R16 - R17	48° 53'	5.53
K - R9	148° 44'	6.81
A - R1	159° 11'	2.72
R1 - R17	159° 15'	6.44

Coordinates of A (Ir.f.d.): 0742720mE, 1239265mN
U.T.M. 20 WGS 84 (+/- 6.00m)
G.P.S. Direct Observation

See Plan G. A. 236

Approved *None Hall*

Director of Surveys
30/7/13



SCALE 1:1500
Distances are in METRES

○ Denotes Iron put except where otherwise stated
Bearings are Cassini Grid based on Solar Observations

PLAN of a Parcel of land coloured pink in the Ward of Tobago

Containing one point two four one four hectares

Surveyed by me, with due authority, on the 15th March 2000 and 8th May 2013 for Carmella Mander Greene

Certified Correct in accordance with Regulation 25 (1) of The Land Surveyors' Regulations 1998,

Checked by *mm. 24/7/2013*

[Signature] TTLS

Entered on