

TO BE BROUGHT UNDER THE PROVISIONS OF THE REAL PROPERTY ORDINANCE

U.P.R.N. No. 1434 1434/180

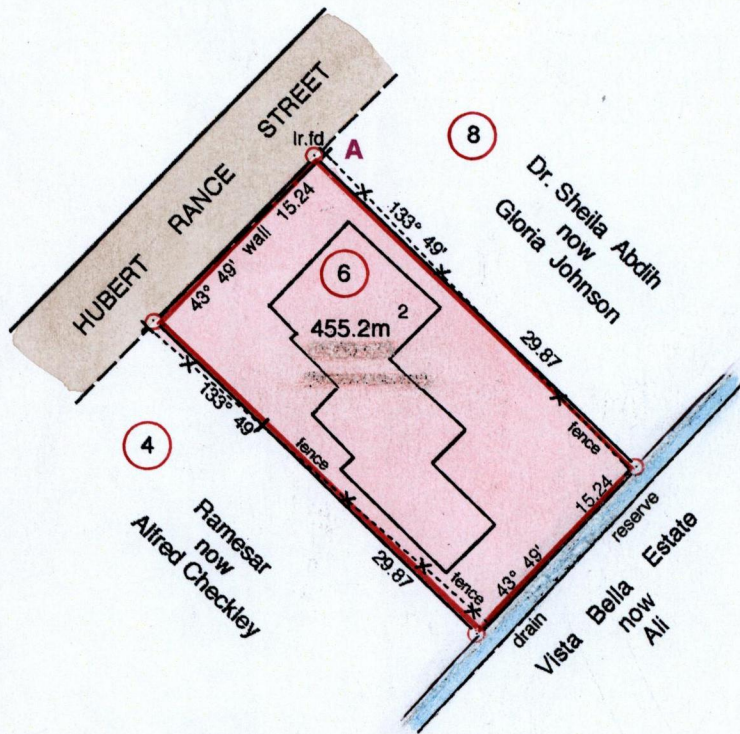
Cadastral Sheet 53E, G.3.E
2/b
City of San Fernando
County of Victoria

1830
G.N.
Cassini

A: N 1137,670, E 668,224
UTM ZONE20 , WGS84(+/- 5.00M)
Direct Observation-GPS hand held

Process ID # 56358

See Reg .Deed No 3767/1950
See Reg .Deed No 5952/1944
For Plan



Approved
Director of Surveys 28/2/13

Distances are in metres
SCALE 1 : 500

○ Denotes Iron Put unless otherwise stated

Bearing are Cassini Grid based on Solar Obs.

PLAN of a parcel of land coloured pink in the City of San Fernando

Containing four hundred and fifty five point two square metres

Surveyed by me, with due authority, on 28th February 2012 for Marcus Brathwaite and Monica Brathwaite

In accordance with Regulation 25(1) of the Land Surveyors' Regulations 1998, I certify that this plan is correct.

Entered by.....

.....
Trinidad and Tobago Land Surveyor, 15/06/2012

Checked by mm 17/6/2013

Trinidad and Tobago Land Surveyor, 15/06/2012

"A"

This is the Plan marked "A" referred to the annexed affidavit of Gerald Lewis dated 15th day of June, 2012.

Before me

Dexter Soodeen
Commissioner of Affidavit



1434/180