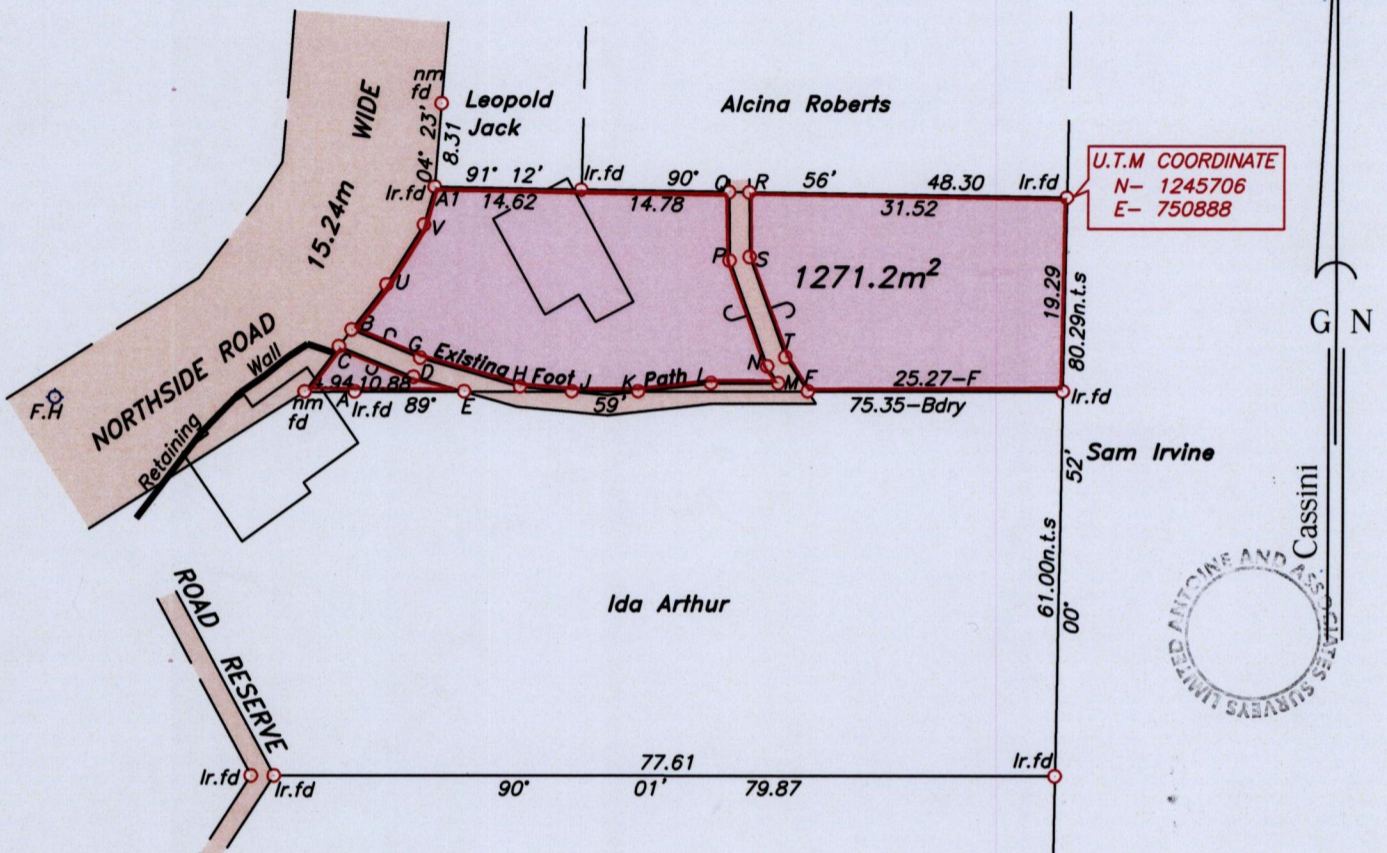


U.P.R.N.....  
To be brought under the provisions  
of the REAL PROPERTY ORDINANCE

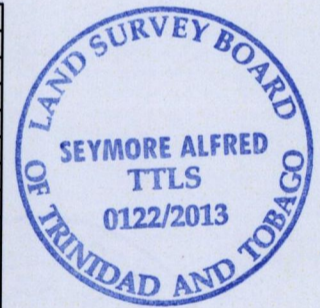
Cadastral Sheet *I.13.E*  
Ward of *Tobago*  
Parish of *St. David*  
**RUNNEMEDE**

Vide Bk.937 Fol.67



LEGEND			LEGEND		
LINE	BEARING	DISTANCE	LINE	BEARING	DISTANCE
A-A1	20° 57'	21.83	H-J	95° 30'	5.18
A-C	340° 29'	4.73	M-N	326° 16'	2.01
C-B	36° 55'	2.07	N-P	340° 09'	11.23
C-D	112° 11'	7.99	P-Q	359° 21'	6.80
D-E	105° 53'	5.25	Q-R	90° 56'	2.00
E-J	89° 59'	10.71	R-S	179° 21'	6.41
J-K	89° 59'	6.63	S-T	160° 09'	10.64
K-L	83° 37'	7.31	T-F	146° 16'	4.07
L-M	90° 04'	6.72	B-U	36° 55'	5.70
K-F	89° 59'	16.92	U-V	31° 46'	7.00
B-G	112° 11'	7.36	V-A1	15° 22'	3.91
G-H	105° 53'	10.35	C-nm.fd	216° 55'	5.59
			A-F.H	268° 59'	29.59

F.H-Fire Hydrant



Approved

*Seymore Alfred*  
.....  
Director of Surveys  
2 July 2013

Note- UTM Zone 20 (WGS 84) Coordinates obtained from hand held GPS receiver

+ 5.00m

SCALE 1:750

○ Denotes iron put, except otherwise stated.

Bearings are grid based on solar observations

Distances are in metres

PLAN of a parcel of land coloured *pink* in the Ward of *Tobago*  
Containing *one thousand two hundred and seventy one point three square metres.*  
Surveyed by me, with due authority on *27th November 2012 & 24th January 2013* for  
*Marilyn Dowridge*  
Certified Correct in accordance with Regulation 25 (1) of the Land Surveyors Regulations 1998.

Checked by.....  
Entered .....

*Seymore Alfred*  
.....  
*Marilyn Dowridge*  
.....

Trinidad & Tobago Land Surveyor.....2013.

Path: \\aasl-server\2012survey\d154\m dowridge.dwg