

1434

151

TO BE BROUGHT UNDER THE PROVISIONS OF THE REAL PROPERTY ORDINANCE

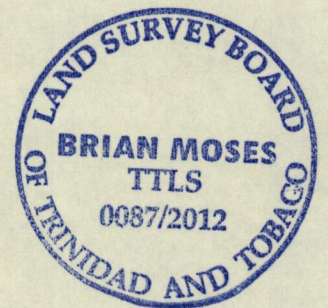
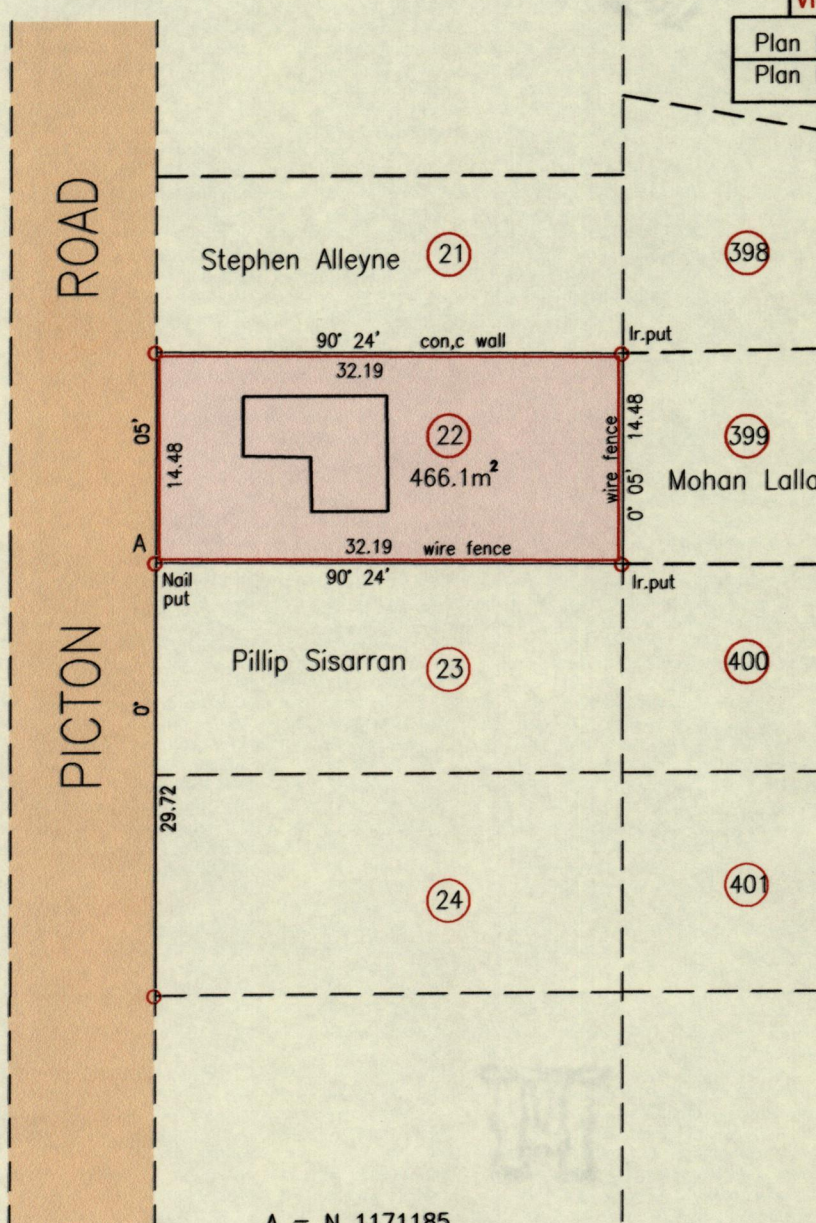
Cadastral Sheet $\frac{25F}{1/b}$, C.22.M.

Ward of Manzanilla

County of St Andrew

22 Picton Road Sangre Grande

Vide
Plan D.C. 61
Plan K.G. 60



Derived From Hand- Held GPS (+/-5m)
UTM Zone 20 Naparima Co-ordinates

Approved.....
Director of Surveys
17/12

SCALE 1:500
Distances are in Metres

Bearings are Cassini Grid based on Solar Obs.

○ Denotes Iron found unless otherwise stated

Plan of a Parcel of land coloured pink in the Ward of Manzanilla
Containing four six six point one square metres

Surveyed by me, with due authority, on 17th April 2009 for Alma Nicholas
In accordance with Regulation 25(1) of the Land Surveyors' Regulations 1998,
I certify that this plan is correct.

Checked by Brian Moses

Entered on Trinidad & Tobago Land Surveyor 3rd May 2012