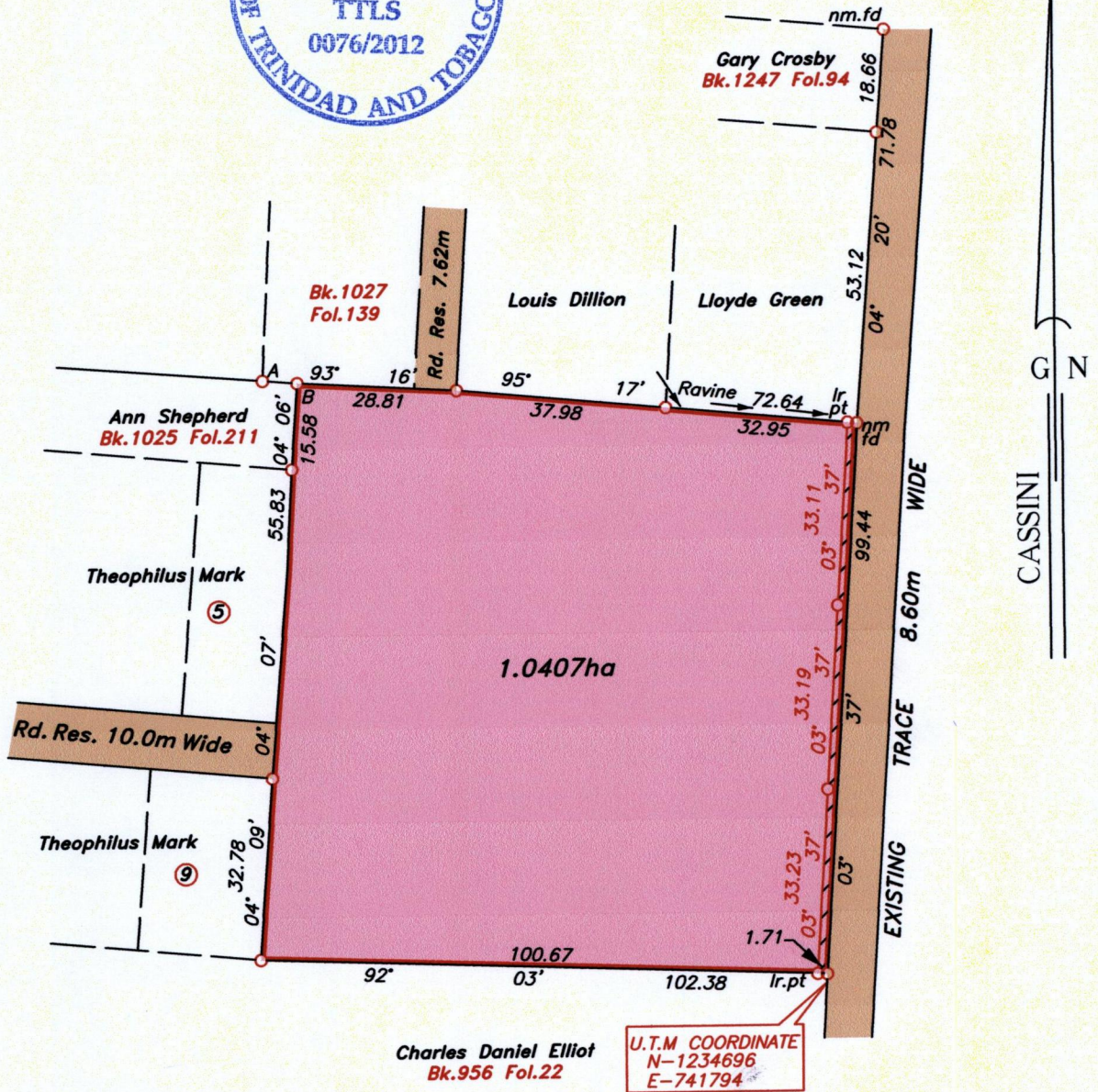


U.P.R.N.....
To be brought under the provisions
of the REAL PROPERTY ORDINANCE

Cadastral Sheet 1.21.D $\frac{1J}{2/a}$
Ward of Tobago
Parish of St. Patrick
HAMPDEN/LOWLANDS



Note- UTM Zone 20 (WGS 84) Coordinates obtained from hand held GPS receiver
± 5.00m

Hatched area occupied by Road is 170.0m²

Approved

.....
Director of Surveys



LEGEND		
LINE	BEARING	DISTANCE
A-B	94° 30'	6.29

SCALE 1:1250

○ Denotes iron found, except otherwise stated.

Bearings are grid based on solar observations

Distances are in metres

PLAN of a parcel of land coloured *pink* in the Ward of *Tobago*
Containing *one point zero four zero seven hectares.*

Surveyed by me, with due authority on 3rd September 2012 George Williams & Nathan Nathaniel Williams

In accordance with Regulation 25 (1) of the Land Surveyors' Regulations 1998, I certify that this plan is correct.

Checked by *MM 20/6/2013*

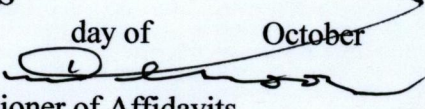
Entered

Trinidad & Tobago Land Surveyor..... *Lyndon Antoine* 19th October 2012.

"A"

This is the Survey Plan annexed and marked "A" referred to in the Affidavit of **GEORGE WILLIAMS & NATHAN NATHANIEL WILLIAMS**

SWORN to before me this 20th day of October 2012


Commissioner of Affidavits

CEWILL E. DENOON
Commissioner of Affidavits
Tobago.



1434/147